

Product datasheet for RC203414L1

MAB21L2 (NM_006439) Human Tagged Lenti ORF Clone

Product data:

Product Type:	Expression Plasmids
Product Name:	MAB21L2 (NM_006439) Human Tagged Lenti ORF Clone
Tag:	Myc-DDK
Symbol:	MAB21L2
Synonyms:	MCOPS14; MCSKS14
Mammalian Cell Selection:	None
Vector:	pLenti-C-Myc-DDK (PS100064)
E. coli Selection:	Chloramphenicol (34 ug/mL)
ORF Nucleotide Sequence:	The ORF insert of this clone is exactly the same as(RC203414).
Restriction Sites:	SgfI-MluI
Cloning Scheme:	

Cloning sites used for ORF Shuttling:



* The last codon before the Stop codon of the ORF.

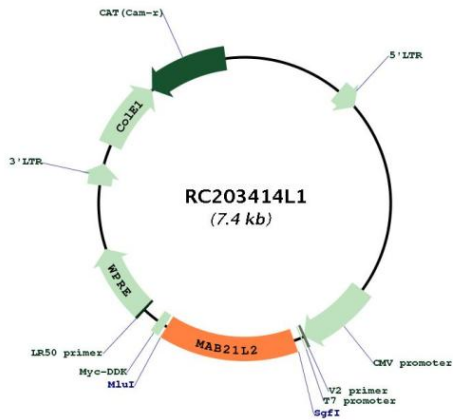
ACCN:	NM_006439
ORF Size:	1077 bp



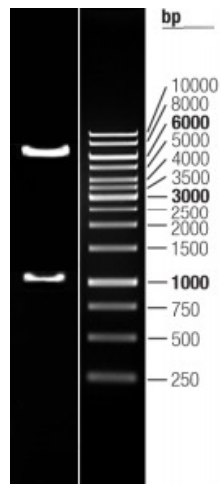
[View online »](#)

OTI Disclaimer:	The molecular sequence of this clone aligns with the gene accession number as a point of reference only. However, individual transcript sequences of the same gene can differ through naturally occurring variations (e.g. polymorphisms), each with its own valid existence. This clone is substantially in agreement with the reference, but a complete review of all prevailing variants is recommended prior to use. More info
OTI Annotation:	This clone was engineered to express the complete ORF with an expression tag. Expression varies depending on the nature of the gene.
Components:	The ORF clone is ion-exchange column purified and shipped in a 2D barcoded Matrix tube containing 10ug of transfection-ready, dried plasmid DNA (reconstitute with 100 ul of water).
Reconstitution Method:	<ol style="list-style-type: none">1. Centrifuge at 5,000xg for 5min.2. Carefully open the tube and add 100ul of sterile water to dissolve the DNA.3. Close the tube and incubate for 10 minutes at room temperature.4. Briefly vortex the tube and then do a quick spin (less than 5000xg) to concentrate the liquid at the bottom.5. Store the suspended plasmid at -20°C. The DNA is stable for at least one year from date of shipping when stored at -20°C.
RefSeq:	NM_006439.3
RefSeq Size:	2785 bp
RefSeq ORF:	1080 bp
Locus ID:	10586
UniProt ID:	Q9Y586
Cytogenetics:	4q31.3
Domains:	Mab-21
MW:	40.9 kDa
Gene Summary:	This gene is similar to the C. elegans MAB-21 cell fate-determining gene, a downstream target of transforming growth factor-beta signaling. It is thought that this gene may be involved in neural development. The protein encoded by this gene is primarily nuclear, although some cytoplasmic localization has been observed. [provided by RefSeq, Jul 2008]

Product images:



Circular map for RC203414L1



Double digestion of RC203414L1 using SgfI and MluI