

Product datasheet for **RC203414**

MAB21L2 (NM_006439) Human Tagged ORF Clone

Product data:

Product Type:	Expression Plasmids
Product Name:	MAB21L2 (NM_006439) Human Tagged ORF Clone
Tag:	Myc-DDK
Symbol:	MAB21L2
Synonyms:	MCOPS14; MCSKS14
Mammalian Cell Selection:	Neomycin
Vector:	pCMV6-Entry (PS100001)
E. coli Selection:	Kanamycin (25 ug/mL)
ORF Nucleotide Sequence:	>RC203414 ORF sequence Red=Cloning site Blue=ORF Green=Tags(s)

TTTTGTAATACGACTCACTATAGGGCGCCGGGAATTCGTCGACTGGATCCGGTACCGAGGAGATCTGCC
GCC**CGATCGCC**

ATGATCGCCGCTCAGGCCAAGCTGGTTTACCAGCTCAATAAGTACTACACTGAGCGCTGTCAGGCGCGCA
AGGCGGCCATCGCCAAAACCATCCGAGAGGTCTGTAAGGTGGTCTCGGACGTGCTCAAGGAAGTGGAGGT
GCAGGAGCCTCGTTTCATCAGCTCCTTGAGCGAGATCGATGCCCGCTACGAGGGGCTCGAGGTCATTTCC
CCCACGAATTTGAGGTGGTCTCTACCTAAACCAGATGGGCGTCTTCAACTTCGTGGACGACGGCTCGC
TGCCCGGCTGCGCAGTGTCAAACCTGAGCGATGGGCGGAAGCGGAGCATGTCTCTGGGTGCGATTCAT
CACGGCGTCGGGCTATCTCTCAGCGCGTAAGATCCGCTCGCGTTTCCAGACGCTGGTGGCCAGGCGGTG
GACAAGTGCAGCTATCGGGATGTGGTCAAGATGATCGCGGACACCAGCGAGGTCAAGTTGCGCATCAGGG
AGCGCTATGTGGTGCAAATCACTCCGGCGTTCAAGTGCACCGGGATCTGGCCTCGCAGCGCGGCACAGTG
GCCTATGCCCCACATCCCTTGGCCCGGCCCAATCGGGTGGCCGAGGTCAAGGCCGAAGGGTTCAACTTG
CTCTCGAAGGAGTGTACTCGCTGACGGCAAGCAGAGCTCGGCAGAGAGCGACGCTGGGTGCTACAGT
TCGGGGAGGCGGAGAACCCTGCTGATGGGCGGCTGCCGAAACAAGTGCCTCTCAGTGTGAAGACTCT
GCGGGACCGCCACCTGGAGCTACCCGGCCAGCCGCTCAACAACCTACCACATGAAGACGCTGCTGTGTAC
GAGTGCAGAAACACCCACGAGAAACGGACTGGGACGAGTGCCTGGGCGACCGGCTCAACGGCATCC
TGCTGCAGCTCATCTCCTGCCTGCAGTGCAGCGCCGCTGCCCTCACTACTTTCTGCCAACCTCGACCTCTT
TCAGGGCAAGCCCCATTGCGCCCTGGAGAGCGCTGCCAAGCAGACCTGGAGGTTGGCCAGGAAATTTCT
ACCAATCCAAAAGCCTGGACAAACTA

ACGCGTACGCGGCCGCTCGAGCAGAAACTCATCTCAGAAGAGGATCTGGCAGCAAATGATATCCTGGATT
ACAAGGATGACGACGATAAGGTTTAA



[View online »](#)

Protein Sequence: >RC203414 protein sequence
Red=Cloning site Green=Tags(s)

MIAAQAKLVYQLNKYYTERCQARKAAIAKTIREVCKVVSVDVLKEVEVQEPRFISSLSEIDARYEGLEVIS
 PTEFEVVLVLNQMVFNFVDDGSLPGCAVLKLSDGRKRSMWVEFITASGYLSARKIRSRFQTLVAQAV
 DKCSYRDVVKMIADTSEVKLRIRERYVQITPAFKCTGIWPRSAQWPMHIPWPGPNRVAEVKAEGFNL
 LSKECYSLTGKQSSAESDAWVLQFGEAENRLMGGCRNKCLSVLKTLRDRHLELPQGPLNNYHMKTLLLY
 ECEKHPRETDWDESLGDRLNGILLQLISCLQCRRCPHYFLPNLDFQGKPHSALESAAKQWRLAREIL
 TNPKSLDKL

TRTRPLEQKLISEEDLAANDILDYKDDDDKV

Chromatograms: https://cdn.origene.com/chromatograms/mk6566_g03.zip

Restriction Sites: SgfI-MluI

Cloning Scheme:



* The last codon before the Stop codon of the ORF

ACCN: NM_006439

ORF Size: 1077 bp

OTI Disclaimer: The molecular sequence of this clone aligns with the gene accession number as a point of reference only. However, individual transcript sequences of the same gene can differ through naturally occurring variations (e.g. polymorphisms), each with its own valid existence. This clone is substantially in agreement with the reference, but a complete review of all prevailing variants is recommended prior to use. [More info](#)

OTI Annotation: This clone was engineered to express the complete ORF with an expression tag. Expression varies depending on the nature of the gene.

Components: The ORF clone is ion-exchange column purified and shipped in a 2D barcoded Matrix tube containing 10ug of transfection-ready, dried plasmid DNA (reconstitute with 100 ul of water).

Reconstitution Method:

1. Centrifuge at 5,000xg for 5min.
2. Carefully open the tube and add 100ul of sterile water to dissolve the DNA.
3. Close the tube and incubate for 10 minutes at room temperature.
4. Briefly vortex the tube and then do a quick spin (less than 5000xg) to concentrate the liquid at the bottom.
5. Store the suspended plasmid at -20°C. The DNA is stable for at least one year from date of shipping when stored at -20°C.

RefSeq: [NM_006439.5](#)

RefSeq Size: 2785 bp

RefSeq ORF: 1080 bp

Locus ID: 10586

UniProt ID: [Q9Y586](#)

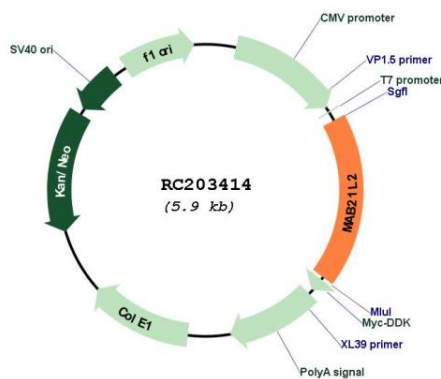
Cytogenetics: 4q31.3

Domains: Mab-21

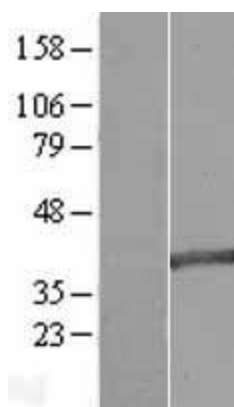
MW: 40.9 kDa

Gene Summary: This gene is similar to the *C. elegans* MAB-21 cell fate-determining gene, a downstream target of transforming growth factor-beta signaling. It is thought that this gene may be involved in neural development. The protein encoded by this gene is primarily nuclear, although some cytoplasmic localization has been observed. [provided by RefSeq, Jul 2008]

Product images:



Circular map for RC203414



Western blot validation of overexpression lysate (Cat# [LY416647]) using anti-DDK antibody (Cat# [TA50011-100]). Left: Cell lysates from untransfected HEK293T cells; Right: Cell lysates from HEK293T cells transfected with RC203414 using transfection reagent MegaTran 2.0 (Cat# [TT210002]).