

## Product datasheet for **RC203413**

### **RAB25 (NM\_020387) Human Tagged ORF Clone**

#### Product data:

|                          |   |
|--------------------------|---|
| Product Type:            | Expression Plasmids   |
| Product Name:            | RAB25 (NM_020387) Human Tagged ORF Clone                          |
| Tag:                     | Myc-DDK   |
| Symbol:                  | RAB25   |
| Synonyms:                | CATX-8; RAB11C  |
| Vector:                  | pCMV6-Entry (PS100001)  |
| E. coli Selection:       | Kanamycin (25 ug/mL)  |
| Cell Selection:          | Neomycin  |
| ORF Nucleotide Sequence: | >RC203413 ORF sequence<br>Red=Cloning site Blue=ORF Green=Tags(s) |

TTTTGTAATACGACTCACTATAGGGCGGCCGGAATTCGTCGACTGGATCCGGTACCGAGGAGATCTGCC  
GCC**CGATCGC**C

ATGGGGAATGGAAGACTGAGGAAGATTATAACTTTGTCTTCAAGGTGGTGTGATCGGCGAATCAGGTGTGG  
GGAAGACCAATCTACTCTCCCGATTACGCGCAATGAGTTCAGCCACGACAGCCGCACCACCATCGGGT  
TGAGTTCTCCACCCGACTGTGATGTTGGGCACCGCTGCTGTCAAGGCTCAGATCTGGGACACAGCTGGC  
CTGGAGCGGTACCGAGCCATCACCTCGGCGTACTATCGTGGTGCAGTGGGGGCCCTCCTGGTGTGGTACC  
TAACCAAGCACCAGACCTATGCTGTGGTGGAGCGATGGCTGAAGGAGCTCTATGACCATGCTGAAGCCAC  
GATCGTCGTCATGCTCGTGGTAACAAAAGTGACCTCAGCCAGGCCCGGGAAGTGCCCACTGAGGAGGCC  
CGAATGTTTCGCTGAAAACAATGGACTGCTCTTCTGGAGACCTCAGCCCTGGACTCTACCAATGTTGAGC  
TAGCCTTTGAGACTGTCCTGAAAGAAATCTTTGCGAAGGTGTCCAAGCAGAGACAGAACAGCATCCGGAC  
CAATGCCATCACTCTGGGCAGTGGCCAGGCTGGACAGGAGCTGGCCCTGGGAGAAGAGGGCCTGTTGC  
ATCAGCCTC

**ACGCGT**ACGCGGCCGCTCGAGCAGAACTCATCTCAGAAGAGGATCTGGCAGCAAATGATATCCTGGATT  
ACAAGGATGACGACGATAAGGTTTAA



[View online »](#)

Protein Sequence: >RC203413 protein sequence  
 Red=Cloning site Green=Tags(s)

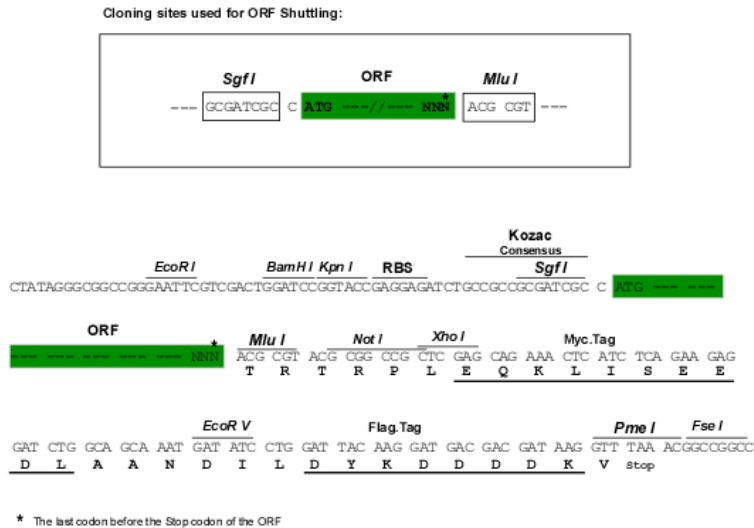
MNGNTEEDYNFVKVVLIGESGVGKTNLLSRFTRNEFSHDSRTTIGVEFSTRVLMGTAAVKAQIWDTAG  
 LERYRAITSAYYRGAVGALLVFDLTKHQTYAVVERWLKELYDHAEATIVVMLVGNKSDLQAREVPTEEA  
 RMFAENGLLFLETSALDSTNVELAFETVLKEIFAKVSKQRQNSIRTNAILGSAQAGQEPGPGEKRACC  
 ISL

TRTRPLEQKLISEEDLAANDILDYKDDDDKV

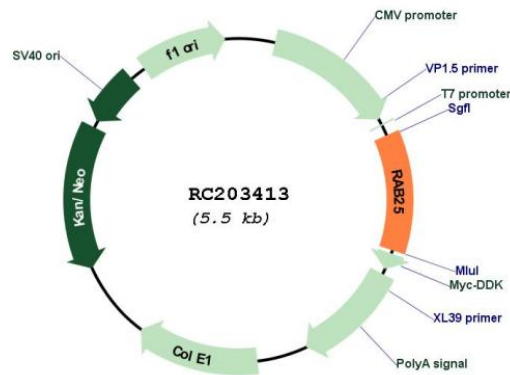
Chromatograms: [https://cdn.origene.com/chromatograms/mk6146\\_e03.zip](https://cdn.origene.com/chromatograms/mk6146_e03.zip)

Restriction Sites: Sgfl-MluI

Cloning Scheme:



Plasmid Map:

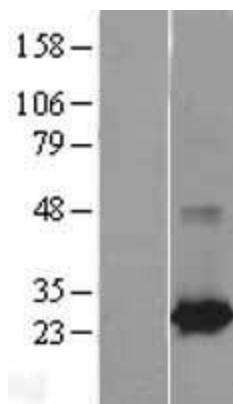


ACCN: NM\_020387

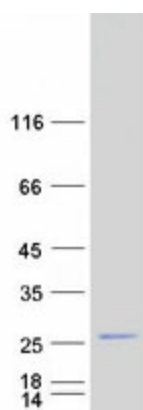
ORF Size: 639 bp

|                               |  |
|-------------------------------|--|
| <b>OTI Disclaimer:</b>        | <p>Due to the inherent nature of this plasmid, standard methods to replicate additional amounts of DNA in E. coli are highly likely to result in mutations and/or rearrangements. Therefore, OriGene does not guarantee the capability to replicate this plasmid DNA. Additional amounts of DNA can be purchased from OriGene with batch-specific, full-sequence verification at a reduced cost. Please contact our customer care team at <a href="mailto:custsupport@origene.com">custsupport@origene.com</a> or by calling 301.340.3188 option 3 for pricing and delivery.</p> <p>The molecular sequence of this clone aligns with the gene accession number as a point of reference only. However, individual transcript sequences of the same gene can differ through naturally occurring variations (e.g. polymorphisms), each with its own valid existence. This clone is substantially in agreement with the reference, but a complete review of all prevailing variants is recommended prior to use. <a href="#">More info</a></p> |
| <b>OTI Annotation:</b>        | <p>This clone was engineered to express the complete ORF with an expression tag. Expression varies depending on the nature of the gene.</p>  |
| <b>Components:</b>            | <p>The ORF clone is ion-exchange column purified and shipped in a 2D barcoded Matrix tube containing 10ug of transfection-ready, dried plasmid DNA (reconstitute with 100 ul of water).</p>  |
| <b>Reconstitution Method:</b> | <ol style="list-style-type: none"><li>1. Centrifuge at 5,000xg for 5min.</li><li>2. Carefully open the tube and add 100ul of sterile water to dissolve the DNA.</li><li>3. Close the tube and incubate for 10 minutes at room temperature.</li><li>4. Briefly vortex the tube and then do a quick spin (less than 5000xg) to concentrate the liquid at the bottom.</li><li>5. Store the suspended plasmid at -20°C. The DNA is stable for at least one year from date of shipping when stored at -20°C.</li></ol>  |
| <b>RefSeq:</b>                | <a href="#">NM_020387.4</a>  |
| <b>RefSeq Size:</b>           | 1101 bp  |
| <b>RefSeq ORF:</b>            | 642 bp   |
| <b>Locus ID:</b>              | 57111  |
| <b>UniProt ID:</b>            | <a href="#">P57735</a>   |
| <b>Cytogenetics:</b>          | 1q22   |
| <b>Domains:</b>               | ras, RAN, RAS, RHO, RAB  |
| <b>Protein Families:</b>      | Druggable Genome, Transcription Factors  |
| <b>MW:</b>                    | 23.5 kDa   |
| <b>Gene Summary:</b>          | <p>The protein encoded by this gene is a member of the RAS superfamily of small GTPases. The encoded protein is involved in membrane trafficking and cell survival. This gene has been found to be a tumor suppressor and an oncogene, depending on the context. Two variants, one protein-coding and the other not, have been found for this gene. [provided by RefSeq, Nov 2015]</p>   |

## Product images:



Western blot validation of overexpression lysate (Cat# [LY402782]) using anti-DDK antibody (Cat# [TA50011-100]). Left: Cell lysates from untransfected HEK293T cells; Right: Cell lysates from HEK293T cells transfected with RC203413 using transfection reagent MegaTran 2.0 (Cat# [TT210002]).



Coomassie blue staining of purified RAB25 protein (Cat# [TP303413]). The protein was produced from HEK293T cells transfected with RAB25 cDNA clone (Cat# RC203413) using MegaTran 2.0 (Cat# [TT210002]).