

## Product datasheet for **RC203409**

### Pellino 2 (PELI2) (NM\_021255) Human Tagged ORF Clone

#### Product data:

Product Type:	Expression Plasmids
Product Name:	Pellino 2 (PELI2) (NM_021255) Human Tagged ORF Clone
Tag:	Myc-DDK
Symbol:	Pellino 2
Mammalian Cell Selection:	Neomycin
Vector:	pCMV6-Entry (PS100001)
E. coli Selection:	Kanamycin (25 ug/mL)
ORF Nucleotide Sequence:	>RC203409 ORF sequence Red=Cloning site Blue=ORF Green=Tags(s)

TTTTGTAATACGACTCACTATAGGGCGGCCGGGAATTCGTCGACTGGATCCGGTACCGAGGAGATCTGCC  
GCC**CGATCGCC**

ATGTTTTCCCCTGGCCAGGAGGAACACTGCGCCCCAATAAGGAGCCAGTGAAATACGGGGAGCTGGTGG  
TGCTCGGGTACAATGGTCTTTACCCAATGGAGATAGAGGACGGAGGAAAAGTAGATTTGCCCTCTACAA  
GCGGCCAAAGGCAATGGTGTCAAACCCAGCACCCTCATGTGATATCCACGCCCCAGGCATCCAAGGCT  
ATCAGCTGCAAAGGTCAACACAGTATATCTACACTTTGTCAAGGAATCAGACTGTGGTGGGTGAGTACA  
CACATGATAAGGATACGGATATGTTTTAGGTGGCAGATCAACAGAAAGCCCTATCGACTTCGTTGTGC  
AGACACGATTTCTGGCAGCCAGAACACGGACGAAGCCAGATCACACAGAGCACCATATCCAGTTTCGCC  
TGCAGGATCGTGTGCGACAGGAATGAACCTTACACAGCACGGATATTCGCCGCCGATTTGACTCTTCCA  
AAAACATATTTCTTGAGAAAAGGCAGCAAAGTGGAAAAACCCGACGGCCACATGGATGGGCTCACTAC  
TAATGGCGTCTGGTGTGCATCCACGAGGGGGCTTACCAGGAGTCCCAGCCCGGGTCTGGCGCGAG  
ATCTCTGTCTGTGGAGATGTGTACACCTTGCAGAAAACAGGTCCGCCAGCAACGAGGAAAAGCTGGTGG  
AAAGTGAGACCAACGTCCTGCAGGACGGCTCCCTCATTGACCTGTGTGGGCCACTCTCCTCTGGAGAAC  
AGCAGATGGGCTTTTTCACTCCAACCTCAGAAGCACATAGAAGCCCTCCGGCAGGAGATTAACGCCGCC  
CGGCTCAGTGTCTGTGGGGCTCAACACCCTGGCCTTCCCAGCATCAACAGGAAAGAGGTGGTGGAGG  
AGAAGCAGCCCTGGGCATATCTCAGTTGTGGCCACGTGCACGGTACCACAACCTGGGGCCATCGGAGTGA  
CACGGAGGCCAACGAGAGGGAGTGTCCCATGTGCAGGACTGTGGGCCCTATGTGCCTCTCTGGCTTGGC  
TGTGAGGCAGGATTTTATGTAGACGCAGGACCGCAACTCATGCTTTCACTCCCTGTGGACAGTGTGCT  
CGGAGAAGTCTGCAAAATACTGGTCTCAGATCCCGTTGCCTCATGGAACCTCATGCATTTACAGCTGCTT  
CCCTTTCTGTGCTACACAGCTGGTTGGGAGCAAACTGCATCAAATTAATTTTCAAGGTCCAATTGAC

**ACGCGT**ACGCGGGCGCTCGAGCAGAAACTCATCTCAGAAGAGGATCTGGCAGCAAATGATATCTGGATT  
ACAAGGATGACGACGATAAGGTTTAA



[View online »](#)

**Protein Sequence:** >RC203409 protein sequence  
Red=Cloning site Green=Tags(s)

MFSPGQEEHCAPNKEPVKYGELVVLGYNGALPNGDRGRRKSRFALYKRPKANGVKPSTVHVIISTPQASKA  
 ISCKGQHSISYTLSRNQTVVVEYTHDKDMDMFQVGRSTESPIDFVVDITISGSQNTDEAQITQSTISRFA  
 CRIVCDRNEPYTARIFAAGFDSSKNIFLGEKAAKWKNPDPGHMDGLTTNGVLVMHPRGGFTEESQPGVWRE  
 ISVCGDVYTLRETRSAQQRGKLVESETNVLQDGLIDL CGATLLWRTADGLFHTPTQKHIEALRQEINAA  
 RPQCPVGLNTLAFPSINRKEVVEEKQPWAYLSCGHVHGYNWGHRSDEANERECPCMCRTVGPYVPLWLG  
 CEAGFYVDAGPPTHAFTPCGHVCEKSAKYWSQIPLPHGTHAFHAACPFCAATQLVGEQNCIKLIFQGPID

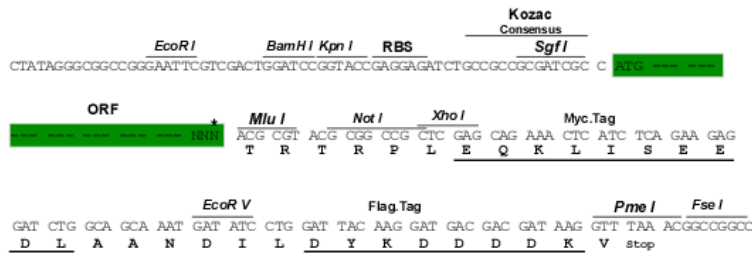
TRTRPLEQKLISEEDLAANDILDYKDDDDKV

**Chromatograms:** [https://cdn.origene.com/chromatograms/mk6566\\_b02.zip](https://cdn.origene.com/chromatograms/mk6566_b02.zip)

**Restriction Sites:** SgfI-MluI

**Cloning Scheme:**

Cloning sites used for ORF Shuttling:



\* The last codon before the Stop codon of the ORF

**ACCN:** NM\_021255

**ORF Size:** 1260 bp

**OTI Disclaimer:** The molecular sequence of this clone aligns with the gene accession number as a point of reference only. However, individual transcript sequences of the same gene can differ through naturally occurring variations (e.g. polymorphisms), each with its own valid existence. This clone is substantially in agreement with the reference, but a complete review of all prevailing variants is recommended prior to use. [More info](#)

**OTI Annotation:** This clone was engineered to express the complete ORF with an expression tag. Expression varies depending on the nature of the gene.

**Components:** The ORF clone is ion-exchange column purified and shipped in a 2D barcoded Matrix tube containing 10ug of transfection-ready, dried plasmid DNA (reconstitute with 100 ul of water).

**Reconstitution Method:**

1. Centrifuge at 5,000xg for 5min.
2. Carefully open the tube and add 100ul of sterile water to dissolve the DNA.
3. Close the tube and incubate for 10 minutes at room temperature.
4. Briefly vortex the tube and then do a quick spin (less than 5000xg) to concentrate the liquid at the bottom.
5. Store the suspended plasmid at -20°C. The DNA is stable for at least one year from date of shipping when stored at -20°C.

**RefSeq:** [NM\\_021255.3](#)

**RefSeq Size:** 5755 bp

**RefSeq ORF:** 1263 bp

**Locus ID:** 57161

**UniProt ID:** [Q9HAT8](#)

**Cytogenetics:** 14q22.3

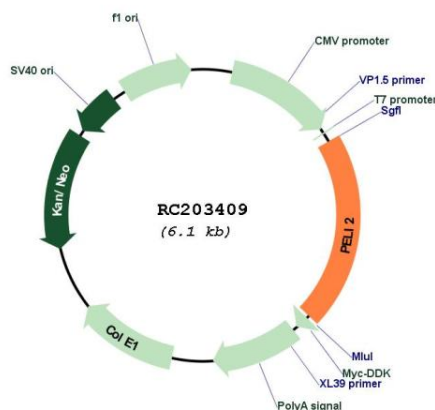
**Domains:** Pellino

**Protein Families:** Druggable Genome

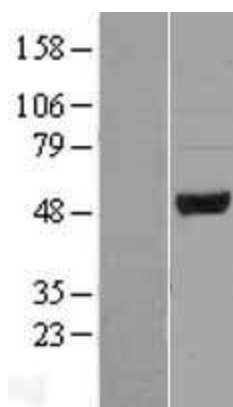
**MW:** 46.4 kDa

**Gene Summary:** E3 ubiquitin ligase catalyzing the covalent attachment of ubiquitin moieties onto substrate proteins. Involved in the TLR and IL-1 signaling pathways via interaction with the complex containing IRAK kinases and TRAF6. Mediates IL1B-induced IRAK1 'Lys-63'-linked polyubiquitination and possibly 'Lys-48'-linked ubiquitination. May be important for LPS- and IL1B-induced MAP3K7-dependent, but not MAP3K3-dependent, NF-kappa-B activation. Can activate the MAP (mitogen activated protein) kinase pathway leading to activation of ELK1. [UniProtKB/Swiss-Prot Function]

### Product images:



Circular map for RC203409



Western blot validation of overexpression lysate (Cat# [LY411961]) using anti-DDK antibody (Cat# [TA50011-100]). Left: Cell lysates from untransfected HEK293T cells; Right: Cell lysates from HEK293T cells transfected with RC203409 using transfection reagent MegaTran 2.0 (Cat# [TT210002]).