

## Product datasheet for **RC203403**

### UBTD1 (NM\_024954) Human Tagged ORF Clone

#### Product data:

Product Type:	Expression Plasmids
Product Name:	UBTD1 (NM_024954) Human Tagged ORF Clone
Tag:	Myc-DDK
Symbol:	UBTD1
Mammalian Cell Selection:	Neomycin
Vector:	pCMV6-Entry (PS100001)
E. coli Selection:	Kanamycin (25 ug/mL)
ORF Nucleotide Sequence:	>RC203403 representing NM_024954 Red=Cloning site Blue=ORF Green=Tags(s)

TTTTGTAATACGACTCACTATAGGGCGGCCGGAATTCGTCGACTGGATCCGGTACCGAGGAGATCTGCC  
GCC**CGATCGCC**

ATGGGCAACTGCGTGGGAGACAGCGCCGGGAGAGGCCGGCAGCCCCGGGACACCCCGCAAGCGAGCAG  
GACGCAATGAGCCCTGAAGAAAGAGCGGCTTAAGTGGAAGAGCGACTACCCCATGACTGACGGGACGCT  
GCGGAGCAAACGGGATGAGTTCTGGGACACAGCGCCTGCCTTCGAGGGCCGCAAGGAGATCTGGGATGCC  
CTCAAGGCTGCCGCTATGCTGCTGAAGCCAACGACACGAGCTGGCCAGGCCATCCTGGATGGAGCCA  
GCATCACCTGCCTCATGGCACCTCTGTGAATGCTACGATGAGCTGGGCAATCGCTACCAGCTGCCCCAT  
CTACTGCCTGTACCGCCGGTGAACCTGCTGCTGGAGCACACGGAGGAGGAGAGCCTGGAGCCCCCGAG  
CCTCCACCCAGCGTGCGCCGTGAGTTCCCGCTGAAGGTGCGCCTGTCCACGGGCAAGGACGTGAGGCTCA  
GCGCCAGCCTGCCGACACAGTGGGGCAGCTCAAGAGGCAGCTGCACGCCAGGAGGGCATCGAGCCATC  
GTGGCAGCGGTGGTTCTTCTCCGGAAGCTGCTCACAGACCGCACACGGCTCCAGGAGACCAAGATCCAG  
AAAGATTTGTATCCAGGTCATCATCAACCAGCCCCACCACCCAGGAC

**ACGCGT**ACGCGGCCGCTCGAGCAGAACTCATCTCAGAAGAGGATCTGGCAGCAAATGATATCTGGATT  
ACAAGGATGACGACGATAAGGTTTAA

Protein Sequence:	>RC203403 representing NM_024954 Red=Cloning site Green=Tags(s)
-------------------	--

MGNCVGRQRRERPAAPGHPRKRAGRNEPLKKERLKWKSDYPMTDQQLRSKRDEFWDTPAFEGRKEIWDA  
LKAAAYAAEANDHELAQAILDGASITLPHGTLCECYDELGNRYQLPIYCLSPVNLLEHTEESLEPPE  
PPPSVRREFPLKVRLSTGKDVRLSASLPDVTGQLKRQLHAQEGIEPSWQRWFFSGKLLTDRTRLQETKIQ  
KDFVIQVIINQPPPPQD

**TR**TRPLEQKLISEEDLAANDILDYKDDDDKV


[View online »](#)

**Chromatograms:** [https://cdn.origene.com/chromatograms/mg2875\\_e07.zip](https://cdn.origene.com/chromatograms/mg2875_e07.zip)

**Restriction Sites:** SgfI-MluI

**Cloning Scheme:**



**ACCN:** NM\_024954

**ORF Size:** 681 bp

**OTI Disclaimer:** The molecular sequence of this clone aligns with the gene accession number as a point of reference only. However, individual transcript sequences of the same gene can differ through naturally occurring variations (e.g. polymorphisms), each with its own valid existence. This clone is substantially in agreement with the reference, but a complete review of all prevailing variants is recommended prior to use. [More info](#)

**OTI Annotation:** This clone was engineered to express the complete ORF with an expression tag. Expression varies depending on the nature of the gene.

**Components:** The ORF clone is ion-exchange column purified and shipped in a 2D barcoded Matrix tube containing 10ug of transfection-ready, dried plasmid DNA (reconstitute with 100 ul of water).

**Reconstitution Method:**

1. Centrifuge at 5,000xg for 5min.
2. Carefully open the tube and add 100ul of sterile water to dissolve the DNA.
3. Close the tube and incubate for 10 minutes at room temperature.
4. Briefly vortex the tube and then do a quick spin (less than 5000xg) to concentrate the liquid at the bottom.
5. Store the suspended plasmid at -20°C. The DNA is stable for at least one year from date of shipping when stored at -20°C.

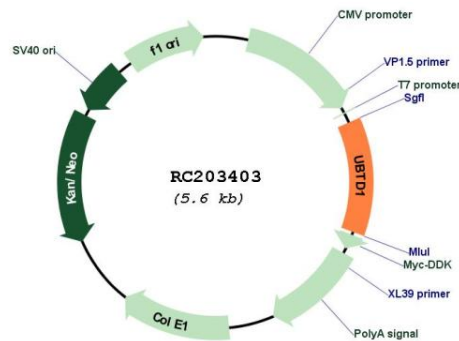
**Note:** Plasmids are not sterile. For experiments where strict sterility is required, filtration with 0.22um filter is required.

**RefSeq:** [NM\\_024954.5](#)

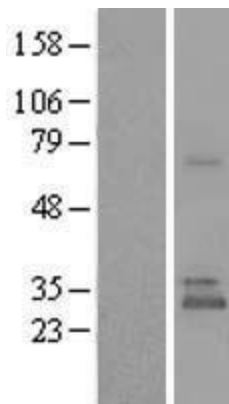
**RefSeq Size:** 1575 bp

RefSeq ORF:	684 bp
Locus ID:	80019
UniProt ID:	<a href="#">Q9HAC8</a>
Cytogenetics:	10q24.1-q24.2
Domains:	UBQ
Protein Families:	Druggable Genome
MW:	25.8 kDa
Gene Summary:	The degradation of many proteins is carried out by the ubiquitin pathway in which proteins are targeted for degradation by covalent conjugation of the polypeptide ubiquitin. This gene encodes a protein that belongs to the ubiquitin family of proteins. The encoded protein is thought to regulate E2 ubiquitin conjugating enzymes belonging to the UBE2D family. [provided by RefSeq, Mar 2014]

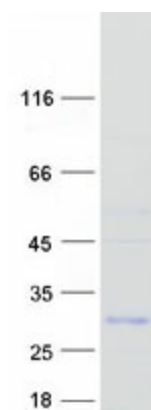
### Product images:



Circular map for RC203403



Western blot validation of overexpression lysate (Cat# [LY410953]) using anti-DDK antibody (Cat# [TA50011-100]). Left: Cell lysates from untransfected HEK293T cells; Right: Cell lysates from HEK293T cells transfected with RC203403 using transfection reagent MegaTran 2.0 (Cat# [TT210002]).



Coomassie blue staining of purified UBTD1 protein (Cat# [TP303403]). The protein was produced from HEK293T cells transfected with UBTD1 cDNA clone (Cat# RC203403) using MegaTran 2.0 (Cat# [TT210002]).