

Product datasheet for RC203402

LASS4 (CERS4) (NM_024552) Human Tagged ORF Clone

Product data:

Product Type:	Expression Plasmids
Product Name:	LASS4 (CERS4) (NM_024552) Human Tagged ORF Clone
Tag:	Myc-DDK
Symbol:	LASS4
Synonyms:	LASS4; Trh1
Mammalian Cell Selection:	Neomycin
Vector:	pCMV6-Entry (PS100001)
E. coli Selection:	Kanamycin (25 ug/mL)
ORF Nucleotide Sequence:	>RC203402 ORF sequence Red=Cloning site Blue=ORF Green=Tags(s)

TTTTGTAATACGACTCACTATAGGGCGCCGGGAATTCGTCGACTGGATCCGGTACCGAGGAGATCTGCC
GCC**CGATCGCC**

ATGCTGTCCAGTTTCAACGAGTGGTTTTGGCAGGACAGGTTCTGGTTACCACCAATGTCACGTGGACAG
AGCTAGAAGACCGGGATGGCCGTGTCTACCCCCACCCAGGACTTGTGGCAGCCCTGCCCTGGCGCT
GGTCTCTGGCCATGCGCCTTGCCTTTGAGAGATTTCATTGGCCTGCCCTGAGCCGGTGGCTGGGTGTG
AGGGATCAGACCAGGAGCAAGTGAAGCCAACGCCACGCTGGAGAAACACTTCCTCACGGAAGGGCACA
GGCCAAAGGAGCCCCAGCTGTCTCTCTGGCCGCCAGTGTGGCCTCACGCTGCAGCAGACCCAGCGATG
GTTCCGGAGACGCCGAACCAGGATCGACCCAGCTGACCAAGAAGTTCTGTGAGGCCAGCTGGAGGTTT
CTCTTCTACCTGTCTCTCTCGTGGCGGCCCTCTCGGTCTGTACCACGAGTCATGGCTGTGGGCACCAG
TAATGTGCTGGGACAGGTACCCAAACCAGACTCTGAAGCCATCCCTGTAAGGTTTCAAGGAGCAGGTG
GGGTTTCTACCTCTCACTGCTAATCAGGCTGCCCTTTGATGTCAAGCGCAAGGATTTCAAGGAGCAGGTG
ATACCACTTTCGTGGCGGTATCCTGATGACCTTCTCTACAGTGCCAACCTGCTGCGCATTGGCTCTC
TGGTGTGCTGTTACATGATTCTCTGACTACCTGCTGGAGGCCGTGAAGATGGTCAACTACATGCAGTA
TCAGCAAGTGTGCGACGCTCTCTCTCATCTTCTCTTGTCTTCTTCTACACCCGACTGGTCTCTTT
CCCACCCAGATCCTCTACACCACATACTACGAGTCCATCAGCAACAGGGGCCCTTCTTCGGCTACTACT
TCTTCAACGGGCTTCTGATGTTGCTGCAGCTGCTGCACGTGTTCTGGTCTTGCCTATTCTGCGCATGCT
CTATAGCTTCATGAAGAAGGGCCAGATGGAGAAGGACATTTCGTAGTGATGTAGAAGAATCAGACTCCAGT
GAGGAGGTGGCGCGGCCAGGAACCTCTGCAGCTAAAGAACGGGGCAGCTGGAGGGCCAGGCCAGCCC
CCACTGATGGCCCTCAGAGCCGGTGGCCGGCGTCTGACCAACAGGCACACAACAGCCACA

ACGCGTACGCGGCCGCTCGAGCAGAAACTCATCTCAGAAGAGGATCTGGCAGCAATGATATCTGGATT
ACAAGGATGACGACGATAAGGTTTAA



[View online »](#)

Protein Sequence: >RC203402 protein sequence
Red=Cloning site Green=Tags(s)

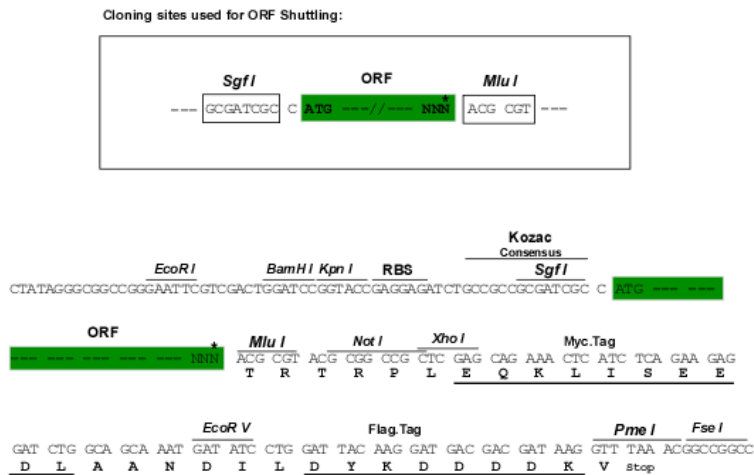
MLSSFNEFWQDRFWLPPNVTWTELEDGRVYPHPQDLLAALPLALVLLAMRLAFERFVIGLPLSRWLGV
 RDQTRRQVKPNATLEKHFLTEGHRPKPEQLSLLAAQCGLTLQQTQRWFRRRRNQDRPQLTKKFCEASWRF
 LFYLSSFVGLSVLYHESWLWAPVMCWDRYPNQTLKPSLYWWYLLLELGFYLSLLIRLPFDVKKDFKEQV
 IHHFVAVILMTFSYANLLRIGSLVLLLDHSSDYLLLEACKMVNYMQYQQVCDALFLIFSFVFFYTRLVLF
 PTQILYTTYYESISNRGPFYFYFFNGLMLLLQLLHVFWSCILRMLYSFMKKGQMEKDIRSDVEESDSS
 EEVAAAQEPLQLKNGAAGGPRPAPTDPGQSRVAGRLTNRHTTAT

TRTRPLEQKLISEEDLAANDILDYKDDDDKV

Chromatograms: https://cdn.origene.com/chromatograms/mk6424_d12.zip

Restriction Sites: SgfI-MluI

Cloning Scheme:



* The last codon before the Stop codon of the ORF

ACCN: NM_024552

ORF Size: 1182 bp

OTI Disclaimer: The molecular sequence of this clone aligns with the gene accession number as a point of reference only. However, individual transcript sequences of the same gene can differ through naturally occurring variations (e.g. polymorphisms), each with its own valid existence. This clone is substantially in agreement with the reference, but a complete review of all prevailing variants is recommended prior to use. [More info](#)

OTI Annotation: This clone was engineered to express the complete ORF with an expression tag. Expression varies depending on the nature of the gene.

Components: The ORF clone is ion-exchange column purified and shipped in a 2D barcoded Matrix tube containing 10ug of transfection-ready, dried plasmid DNA (reconstitute with 100 ul of water).

Reconstitution Method:

1. Centrifuge at 5,000xg for 5min.
2. Carefully open the tube and add 100ul of sterile water to dissolve the DNA.
3. Close the tube and incubate for 10 minutes at room temperature.
4. Briefly vortex the tube and then do a quick spin (less than 5000xg) to concentrate the liquid at the bottom.
5. Store the suspended plasmid at -20°C. The DNA is stable for at least one year from date of shipping when stored at -20°C.

Note: Plasmids are not sterile. For experiments where strict sterility is required, filtration with 0.22um filter is required.

RefSeq: [NM_024552.1](#), [NP_078828.1](#)

RefSeq Size: 1817 bp

RefSeq ORF: 1185 bp

Locus ID: 79603

UniProt ID: [Q9HA82](#)

Cytogenetics: 19p13.2

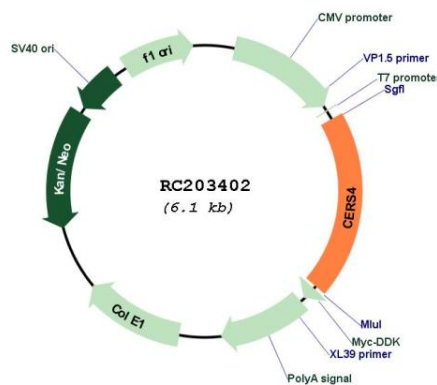
Domains: LAG1, TLC

Protein Families: Transcription Factors, Transmembrane

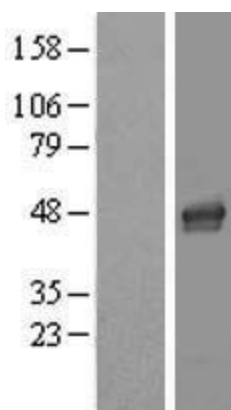
MW: 46.4 kDa

Gene Summary: May be either a bona fide (dihydro)ceramide synthase or a modulator of its activity. When overexpressed in cells is involved in the production of sphingolipids containing different fatty acid donors (N-linked stearyl- (C18) or arachidoyl- (C20) ceramides) in a fumonisin B1-independent manner (By similarity).[UniProtKB/Swiss-Prot Function]

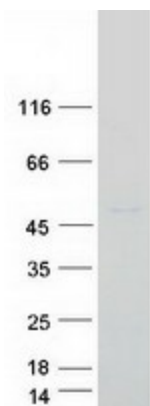
Product images:



Circular map for RC203402



Western blot validation of overexpression lysate (Cat# [LY411226]) using anti-DDK antibody (Cat# [TA50011-100]). Left: Cell lysates from untransfected HEK293T cells; Right: Cell lysates from HEK293T cells transfected with RC203402 using transfection reagent MegaTran 2.0 (Cat# [TT210002]).



Coomassie blue staining of purified CERS4 protein (Cat# [TP303402]). The protein was produced from HEK293T cells transfected with CERS4 cDNA clone (Cat# RC203402) using MegaTran 2.0 (Cat# [TT210002]).