

Product datasheet for **RC203401**

GAL3ST4 (NM_024637) Human Tagged ORF Clone

Product data:

Product Type:	Expression Plasmids
Product Name:	GAL3ST4 (NM_024637) Human Tagged ORF Clone
Tag:	Myc-DDK
Symbol:	GAL3ST4
Synonyms:	GAL3ST-4
Mammalian Cell Selection:	Neomycin
Vector:	pCMV6-Entry (PS100001)
E. coli Selection:	Kanamycin (25 ug/mL)



[View online »](#)

ORF Nucleotide Sequence:

>RC203401 ORF sequence
 Red=Cloning site Blue=ORF Green=Tags(s)

TTTTGTAATACGACTCACTATAGGGCGGCCGGAATTCGTCGACTGGATCCGGTACCGAGGAGATCTGCC
 GCC**GCGATCGCC**

ATGGGCCCTCTCTCTCCTGCCAGGACGCTGCGGCTCTGGGACCTCGGAGCCTGGGGTGGCTCTGGGAG
 TCTTCATGACCATTGGCTTTGCACTCCAGCTCTTGGGAGGGCCCTTCCAGAGGAGCTACCTGGGCTACA
 GCTCCGACAGCCCTCGGCCCATCCCTACGACCAGCCCTTCCGTCCTGCCACCCCGCAGCGACTGGTG
 TTCCTGAAGACACATAAATCCGGGAGCAGCTCTGTGCTGAGCCTGCTTACCCTATGGGGACCAGCAGC
 GGCTGCGCTTCGCCCTCCCTGCCGCTACCAGTTTGGCTACCCAAAGCTTCCAGGCTCTAGGGTAAA
 AGGCTACCGCCACAGGGTGGAGGCACCCAGCTCCCTTCCACATCCTCTGTACCACATGAGGTTCAAC
 CTGAAAGAGGTAAGTTCAGGTCATGCCTTCTGACAGCTTCTTTTTTCCATTGTCCGAGACCCAGCGGCTC
 TGGCTCGCTCGCTTCTCCTACTATAAATCCACCTCATCAGCCTCCGCAAGTCACCATCTTTGGCTGC
 CTTCTCGCCAATCCTCGAGGCTTCTACAGGCTGGGGCCGTGGGGACCTACGCTCGCAACTACTA
 TGGTTTGACTTTGGCCTGCCTTTCCCCAGAGAAAGAGGGCAAGAGAGGGAATATTCATCCCCCAGAG
 ACCCAACCCCCACAGCTGCAGGTCTTGCCTTCTGGTGTGGCCCTCGAGCCAAACCTCAATCCCAA
 TGCCCTCATCCATCCTGTTTCCACTGTTACTGATCATCGCAGCCAGATATCAAGCCCTGCCTCTTTGAT
 TTGGGGTCTTCATCCTTCATCCAGTGGGGTCTGGCCTGGCTGGACTCTGTCTTTGACCTGGTCATGGTGG
 CTGAGTACTTCGATGAGTCATTGGTTCTGCTGGCAGATGCCCTGTGCTGGGGTCTAGATGACGTGGTGGG
 CTTTCATGCACAATGCCAGGCTGGACATAAGCAGGGCCTCAGCACTGTGAGCAACAGTGGACTGACTGCG
 GAGGACCGCAGCTGACTGCACGGGCCGAGCCTGGAACAACCTGGACTGGGCTCTATGTCCACTTCA
 ACCGCAGTCTCTGGGCACGGATAGAGAAATACGGCCAGGGCCGGCTGCAGACAGCTGTGGCCGAGTCCG
 GGCTCGCCGAGAGGCCCTAGCGAAACATTGTCTGGTAGGGGGTGGGCTTCTGACCCCAAATACATCAT
 GATCGCCGGTTCCGCCCTTCCAGTTTGGGTGAGCTAAGTTTGGGCTATATACTTCGGAGTGGATTGA
 GCCCCCAAGACCAAGAGGAATGTGAGCGCTAGCTACCCCTGAGCTCCAGTACAAGGACAAGCTGGATGT
 CAAGCAGTTCGCCCTACCGTCTCACTGCCCTCAAGACTTCAAGGCCACTCTCCCCA

ACGCGTACGCGGCCGCTCGAGCAGAACTCATCTCAGAAGAGGATCTGGCAGCAATGATATCCTGGATT
 ACAAGGATGACGACGATAAGGTTTAA

Protein Sequence:

>RC203401 protein sequence
 Red=Cloning site Green=Tags(s)

MGPLSPARTLRLWGRSLGVALGVFMTIGFALQLLGGPFQRRPLGLQLRQPSAPSLRPALPSCPQRQLV
 FLKTHKSGSSSVLSLLHRYGDQHGLRFALPARYQFGYPKLFQASRVKGYRPOGGGTQLPFHILCHHMRFN
 LKEVLQVMPDSDFFSIVRDPAAALARSASFYYKSTSSAFRKSPLAAFLANPRGFYRPGARGDHYARNLL
 WFDFGLFPPEKRAKRGNIHPPRDPNPPQLQVLPAGGAPRAQTLNPNALIHVSTVTDHRSQISSPASFD
 LGSSSF IQWGLAWLDSVFDLVMVAEYFDESLVLLADALCWGLDDVVGMHNAQAGHKQGLSTVSNGLTA
 EDRLTARARAWNLDWALYVHFNRSWARIEKYQGRLQTAVAE LRARREALAKHCLVGEASDPKYIT
 DRRFRPFQFSGAKVLYILRSLSPQDQEEERLATPELQYKDKLDVKQFPPTVSLPLKTSRPLSP

TRTRPLEQKLISEEDLAANDILDYKDDDDKV

Chromatograms:

https://cdn.origene.com/chromatograms/mk6428_f08.zip

Restriction Sites:

Sgfl-MluI

Cloning Scheme:

Cloning sites used for ORF Shutting:


ACCN: NM_024637

ORF Size: 1458 bp

OTI Disclaimer: The molecular sequence of this clone aligns with the gene accession number as a point of reference only. However, individual transcript sequences of the same gene can differ through naturally occurring variations (e.g. polymorphisms), each with its own valid existence. This clone is substantially in agreement with the reference, but a complete review of all prevailing variants is recommended prior to use. [More info](#)

OTI Annotation: This clone was engineered to express the complete ORF with an expression tag. Expression varies depending on the nature of the gene.

Components: The ORF clone is ion-exchange column purified and shipped in a 2D barcoded Matrix tube containing 10ug of transfection-ready, dried plasmid DNA (reconstitute with 100 ul of water).

Reconstitution Method:

1. Centrifuge at 5,000xg for 5min.
2. Carefully open the tube and add 100ul of sterile water to dissolve the DNA.
3. Close the tube and incubate for 10 minutes at room temperature.
4. Briefly vortex the tube and then do a quick spin (less than 5000xg) to concentrate the liquid at the bottom.
5. Store the suspended plasmid at -20°C. The DNA is stable for at least one year from date of shipping when stored at -20°C.

RefSeq: [NM_024637.2](#)
RefSeq Size: 2561 bp

RefSeq ORF: 1461 bp

Locus ID: 79690

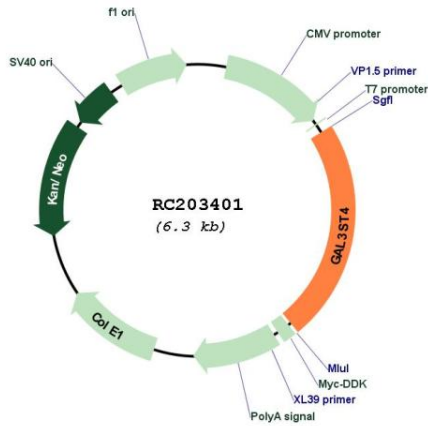
UniProt ID: [Q96RP7](#)
Cytogenetics: 7q22.1

Protein Families: Transmembrane

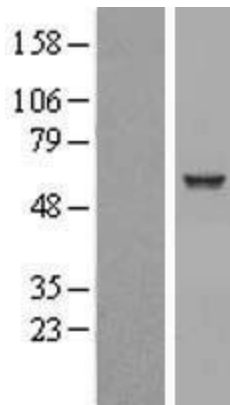
MW: 54.2 kDa

Gene Summary: This gene encodes a member of the galactose-3-O-sulfotransferase protein family. The product of this gene catalyzes sulfonation by transferring a sulfate to the C-3' position of galactose residues in O-linked glycoproteins. This enzyme is highly specific for core 1 structures, with asialofetuin, Gal-beta-1,3-GalNAc and Gal-beta-1,3 (GlcNAc-beta-1,6)GalNAc being good substrates. [provided by RefSeq, Jul 2008]

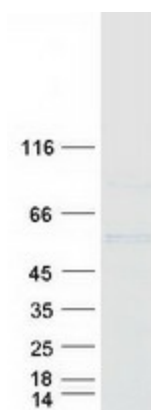
Product images:



Circular map for RC203401



Western blot validation of overexpression lysate (Cat# [LY411104]) using anti-DDK antibody (Cat# [TA50011-100]). Left: Cell lysates from untransfected HEK293T cells; Right: Cell lysates from HEK293T cells transfected with RC203401 using transfection reagent MegaTran 2.0 (Cat# [TT210002]).



Coomassie blue staining of purified GAL3ST4 protein (Cat# [TP303401]). The protein was produced from HEK293T cells transfected with GAL3ST4 cDNA clone (Cat# RC203401) using MegaTran 2.0 (Cat# [TT210002]).