

## Product datasheet for **RC203394**

### CAB39L (NM\_030925) Human Tagged ORF Clone

#### Product data:

Product Type:	Expression Plasmids
Product Name:	CAB39L (NM_030925) Human Tagged ORF Clone
Tag:	Myc-DDK
Symbol:	CAB39L
Synonyms:	bA103J18.3; MO2L; MO25-BETA
Mammalian Cell Selection:	Neomycin
Vector:	pCMV6-Entry (PS100001)
E. coli Selection:	Kanamycin (25 ug/mL)
ORF Nucleotide Sequence:	>RC203394 ORF sequence Red=Cloning site Blue=ORF Green=Tags(s)

TTTTGTAATACGACTCACTATAGGGCGGCCGGAATTCGTCGACTGGATCCGGTACCGAGGAGATCTGCC  
GCC**CGATCGCC**

ATGAAAAAATGCCTTTGTTTAGTAAATCACACAAAAATCCAGCAGAAATTGTGAAAATCCTGAAAGACA  
ATTTGGCCATTTTGAAAAAGCAAGACAAAAAGACAGACAAGGCTTCAGAAGAAGTGTCTAAATCACTGCA  
AGCAATGAAAGAAATCTGTGTGGTACAAACGAGAAAGAACCCCGACAGAAGCAGTGGCTCAGCTAGCA  
CAAGAACTCTACAGCAGTGGCCTGCTGGTGACACTGATAGCTGACCTGCAGCTGATAGACTTTGAGGAAA  
AAAAAGATGTGACCCAGATATTTAAACAACATCTTGAGAAGACAGATAGGCACTCGGAGTCTACTGTGGA  
GTATATTAGTGCTCATCCTCATATCCTGTTTATGCTCCTCAAAGGATATGAAGCCCCACAGATTGCCTTA  
CGTTGTGGGATTATGCTGAGAGAATGTATTCGACATGAACCACTTGCCAAAATCATCCTCTTTTCTAATC  
AATTGAGAGATTTCTTTAAGTACGTGGAGTTGTCAACATTTGATATTGCTTCAGATGCCTTTGCTACTTT  
CAAGGATTTACTAACCAGACATAAAGTGTGGTAGCAGACTTCTTAGAACAAAAATACGACACTATTTTT  
GAAGACTATGAGAAATGCTTCAGTCTGAGAATTATGTTACTAAGAGACAGTCTTTAAAGCTGCTAGGGG  
AGCTGATCCTGGACCGTCACAACCTTTGCCATCATGACAAAGTATATCAGCAAGCCGGAGAACCTGAAACT  
CATGATGAACCTCCTTCGGGATAAAAAGTCCCAACATCCAGTTTGAAGCCTTTCATGTTTTAAGGTGTTT  
GTGGCCAGTCTCACAAAACACAGCCTATTGTGGAGATCCTGTTAAAAAATCAGCCAAACTCATTGAGT  
TTCTGAGCAGCTTCCAAAAGAAAAGGACGGATGATGAGCAGTTCGCTGACGAGAAGAAGTACTTGATTAA  
ACAGATCCGAGACTTGAAGAAAACGGCCCT

**ACGCGT**ACGCGGCCGCTCGAGCAGAAACTCATCTCAGAAGAGGATCTGGCAGCAAATGATATCCTGGATT  
ACAAGGATGACGACGATAAGGTTTAA



[View online »](#)

**Protein Sequence:** >RC203394 protein sequence  
Red=Cloning site Green=Tags(s)

MKKMPLFSKSHKNPAEIVKILKDNLAILEKQDKKTDKASEEVSKSLQAMKEILCGTNEKEPTEAVAQLA  
 QELYSSGLLVTLIADLQLIDFEEKDVTQIFNNILRRQIGTRSPTVEYISAHPHILFMLLKGYEAPQIAL  
 RCGIMLRECIRHEPLAKIILFSNQFRDFFKYVELSTFDIASDAFATFKDLLTRHKVLVADFLQNYDTIF  
 EDYEKLLQSENYVTKRQSLKLLGELILDRHNFAIMTKYISKPENLKLMMNLLRDKSPNIQFEAFHVFKVF  
 VASPHKTQPIVEILLKNQPKLIEFLSSFQKERTDDEQFADEKNYLKQIRDLKKTAP

TRTRPLEQKLISEEDLAANDILDYKDDDDKV

**Chromatograms:** [https://cdn.origene.com/chromatograms/mk6424\\_a02.zip](https://cdn.origene.com/chromatograms/mk6424_a02.zip)

**Restriction Sites:** SgfI-MluI

**Cloning Scheme:**

Cloning sites used for ORF Shuttling:



\* The last codon before the Stop codon of the ORF

**ACCN:** NM\_030925

**ORF Size:** 1011 bp

**OTI Disclaimer:** The molecular sequence of this clone aligns with the gene accession number as a point of reference only. However, individual transcript sequences of the same gene can differ through naturally occurring variations (e.g. polymorphisms), each with its own valid existence. This clone is substantially in agreement with the reference, but a complete review of all prevailing variants is recommended prior to use. [More info](#)

**OTI Annotation:** This clone was engineered to express the complete ORF with an expression tag. Expression varies depending on the nature of the gene.

**Components:** The ORF clone is ion-exchange column purified and shipped in a 2D barcoded Matrix tube containing 10ug of transfection-ready, dried plasmid DNA (reconstitute with 100 ul of water).

**Reconstitution Method:**

1. Centrifuge at 5,000xg for 5min.
2. Carefully open the tube and add 100ul of sterile water to dissolve the DNA.
3. Close the tube and incubate for 10 minutes at room temperature.
4. Briefly vortex the tube and then do a quick spin (less than 5000xg) to concentrate the liquid at the bottom.
5. Store the suspended plasmid at -20°C. The DNA is stable for at least one year from date of shipping when stored at -20°C.

**Note:** Plasmids are not sterile. For experiments where strict sterility is required, filtration with 0.22um filter is required.

**RefSeq:** [NM\\_030925.4](#)

**RefSeq Size:** 3631 bp

**RefSeq ORF:** 1014 bp

**Locus ID:** 81617

**UniProt ID:** [Q9H9S4](#)

**Cytogenetics:** 13q14.2

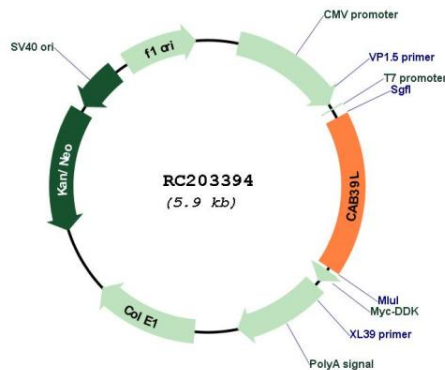
**Domains:** Mo25

**Protein Pathways:** mTOR signaling pathway

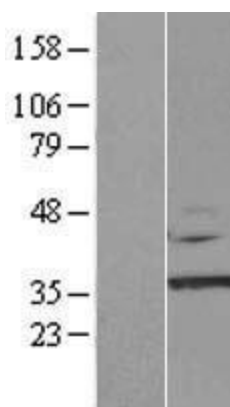
**MW:** 39.2 kDa

**Gene Summary:** Component of a complex that binds and activates STK11/LKB1. In the complex, required to stabilize the interaction between CAB39/MO25 (CAB39/MO25alpha or CAB39L/MO25beta) and STK11/LKB1 (By similarity).[UniProtKB/Swiss-Prot Function]

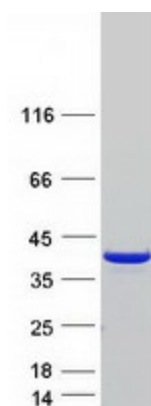
**Product images:**



Circular map for RC203394



Western blot validation of overexpression lysate (Cat# [LY421532]) using anti-DDK antibody (Cat# [TA50011-100]). Left: Cell lysates from untransfected HEK293T cells; Right: Cell lysates from HEK293T cells transfected with [RC211881] using transfection reagent MegaTran 2.0 (Cat# [TT210002]).



Coomassie blue staining of purified CAB39L protein (Cat# [TP303394]). The protein was produced from HEK293T cells transfected with CAB39L cDNA clone (Cat# RC203394) using MegaTran 2.0 (Cat# [TT210002]).