

## Product datasheet for RC203392

### CHODL (NM\_024944) Human Tagged ORF Clone

#### Product data:

Product Type:	Expression Plasmids
Product Name:	CHODL (NM_024944) Human Tagged ORF Clone
Tag:	Myc-DDK
Symbol:	CHODL
Synonyms:	C21orf68; MT75; PRED12
Mammalian Cell Selection:	Neomycin
Vector:	pCMV6-Entry (PS100001)
E. coli Selection:	Kanamycin (25 ug/mL)
ORF Nucleotide Sequence:	>RC203392 ORF sequence Red=Cloning site Blue=ORF Green=Tags(s)

TTTTGTAATACGACTCACTATAGGGCGCCGGGAATTCGTCGACTGGATCCGGTACCGAGGAGATCTGCC  
GCC**CGATCGCC**

ATGAGCCGCGTGGTCTCGCTGCTGCTGGGCGCCGCTGCTCTGCGGCCACGGAGCCTTCTGCCGCCGG  
TGGTCAGCGGCCAAAAGGTGTGTTTTGCTGACTTCAAGCATCCCTGTACAAAATGGCCTACTTCCATGA  
ACTGTCCAGCCGAGTGAGCTTTCAGGAGGCACGCCTGGCTTGAGAGTGAGGGAGGAGTCTCCTCAGC  
CTTGAGAAATGAAGCAGAACAGAAGTTAATAGAGAGCATGTTGAAAACCTGACAAAACCCGGGACAGGGA  
TTTCTGATGGTGATTTCTGGATAGGGCTTTGGAGGAATGGAGATGGGCAAACATCTGGTGCCTGCCAGA  
TCTCTACCAGTGGTCTGATGGAAGCAATCCCAGTACCGAACTGGTACACAGATGAACCTTCTGCCGA  
AGTGAAAAGTGTGTTGTGATGTATACCAACCAACTGCCAATCCTGGCCTTGGGGTCCCTACCTTTACC  
AGTGGAATGATGACAGGTGAACATGAAGCACAATTATTTGCAAGTATGAACCAGAGATTAATCCAAC  
AGCCCCTGTAGAAAAGCCTTATCTTACAAATCAACCAGGAGACCCCATCAGAAATGTGGTTGTTACTGAA  
GCAGGTATAATCCCAATCTAATTTATGTTGTTATACCAACAATACCCCTGCTCTTACTGATACTGGTTG  
CTTTTGAACCTGTTGTTCCAGATGCTGCATAAAAGTAAAGGAAGAACAAAACCTAGTCCAAACAGTC  
TACACTGTGGATTTCAAAGAGTACCAGAAAAGAAAGTGGCATGGAAGTA

**ACGCGT**ACGCGGCCGCTCGAGCAGAAACTCATCTCAGAAGAGGATCTGGCAGCAAATGATATCCTGGATT  
ACAAGGATGACGACGATAAGGTTTAA



[View online »](#)

**Protein Sequence:** >RC203392 protein sequence  
 Red=Cloning site Green=Tags(s)

MSRVVSLLLGAALLCGHGAFRRVVSQGKVCFAFKHPCYKMAYPHELSSRVSFQEARLACESEGGVLLS  
 LENEAEQKLIESMLQNLTKPGTGISDGDWIGLWRNGDQTSAGACPDLYQWSDGSNSQYRNWYTDEPSCG  
 SEKCVVMYHQPTANPGLGGPYLYQWDDRCNMKHNHYICKYEPEINPTAPVEKPYLTNQPGDTHQNVVVTE  
 AGIIPNLIYVVIPTIPLLLLILVAFGTCCFQMLHKSkgRtKtSPNQSTLWISKSTRKESGMEV

TRTRPLEQKLISEEDLAANDILDYKDDDDKV

**Chromatograms:** [https://cdn.origene.com/chromatograms/mk6056\\_b12.zip](https://cdn.origene.com/chromatograms/mk6056_b12.zip)

**Restriction Sites:** SgfI-MluI

**Cloning Scheme:**

Cloning sites used for ORF Shuttling:



\* The last codon before the Stop codon of the ORF

**ACCN:** NM\_024944

**ORF Size:** 819 bp

**OTI Disclaimer:** The molecular sequence of this clone aligns with the gene accession number as a point of reference only. However, individual transcript sequences of the same gene can differ through naturally occurring variations (e.g. polymorphisms), each with its own valid existence. This clone is substantially in agreement with the reference, but a complete review of all prevailing variants is recommended prior to use. [More info](#)

**OTI Annotation:** This clone was engineered to express the complete ORF with an expression tag. Expression varies depending on the nature of the gene.

**Components:** The ORF clone is ion-exchange column purified and shipped in a 2D barcoded Matrix tube containing 10ug of transfection-ready, dried plasmid DNA (reconstitute with 100 ul of water).

**Reconstitution Method:**

1. Centrifuge at 5,000xg for 5min.
2. Carefully open the tube and add 100ul of sterile water to dissolve the DNA.
3. Close the tube and incubate for 10 minutes at room temperature.
4. Briefly vortex the tube and then do a quick spin (less than 5000xg) to concentrate the liquid at the bottom.
5. Store the suspended plasmid at -20°C. The DNA is stable for at least one year from date of shipping when stored at -20°C.

**RefSeq:** [NM\\_024944.3](#)

**RefSeq Size:** 2625 bp

**RefSeq ORF:** 822 bp

**Locus ID:** 140578

**UniProt ID:** [Q9H9P2](#)

**Cytogenetics:** 21q21.1

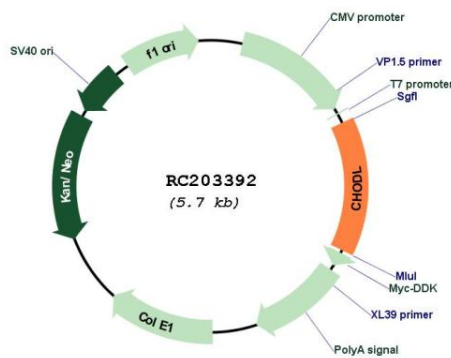
**Domains:** CLECT

**Protein Families:** Transmembrane

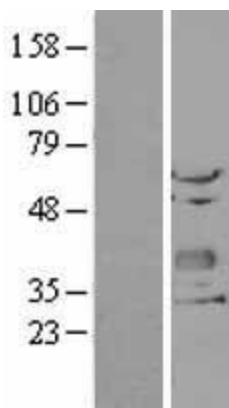
**MW:** 30.4 kDa

**Gene Summary:** This gene encodes a type I membrane protein with a carbohydrate recognition domain characteristic of C-type lectins in its extracellular portion. In other proteins, this domain is involved in endocytosis of glycoproteins and exogenous sugar-bearing pathogens. This protein localizes predominantly to the perinuclear region. Several transcript variants encoding a few different isoforms have been found for this gene. [provided by RefSeq, Feb 2011]

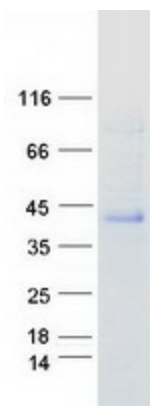
## Product images:



Circular map for RC203392



Western blot validation of overexpression lysate (Cat# [LY403046]) using anti-DDK antibody (Cat# [TA50011-100]). Left: Cell lysates from untransfected HEK293T cells; Right: Cell lysates from HEK293T cells transfected with RC203392 using transfection reagent MegaTran 2.0 (Cat# [TT210002]).



Coomassie blue staining of purified CHODL protein (Cat# [TP303392]). The protein was produced from HEK293T cells transfected with CHODL cDNA clone (Cat# RC203392) using MegaTran 2.0 (Cat# [TT210002]).