

## Product datasheet for **RC203391**

### ASCC2 (NM\_032204) Human Tagged ORF Clone

#### Product data:

Product Type:	Expression Plasmids
Product Name:	ASCC2 (NM_032204) Human Tagged ORF Clone
Tag:	Myc-DDK
Symbol:	ASCC2
Synonyms:	ASC1p100; p100
Mammalian Cell Selection:	Neomycin
Vector:	pCMV6-Entry (PS100001)
E. coli Selection:	Kanamycin (25 ug/mL)



[View online »](#)

**ORF Nucleotide  
Sequence:**

>RC203391 ORF sequence  
 Red=Cloning site Blue=ORF Green=Tags(s)

TTTTGTAATACGACTCACTATAGGGCGGCCGGGAATTCGTCGACTGGATCCGGTACCGAGGAGATCTGCC  
 GCC**GCGATCGCC**

ATGCCAGCTCTGCCCTGGACCACTCCAGATCACCCACAAGGACCCGAAGACAGGAAAGCTGAGGACTT  
 CACCAGCGCTGCACCCCGAGCAGAAGGCAGACCGGTATTTTGTGTTATACAAACCGCCCTAAAGACAA  
 CATTCCCGCCCTAGTGGAGGAGTACCTGGAACGCGCCACCTTCGTAGCCAATGACCTCGACTGGCTCCTG  
 GCCTTGCCTCACGATAAATTCTGGTGCCAGGTGATCTTTGACGAGACTCTACAGAAGTGCCTGGACTCCT  
 ACCTGCGCTATGTCCCGCAAATTCGACGAGGGGGTGGCCTCAGCCCTGAGGTTGTTGACATGCAGAA  
 GCGCCTCCATCGAAGTGTTCCTCACCTTCTCCGCATGTCCACTCACAAAGGAATCCAAAGATCACTTC  
 ATTTCCCTTCTGCGTTTGGAGAAATCCTCTACAATAACTTCTCTTTGACATTCCAAAGATCCTGGACC  
 TCTGCGTCTTTGGAAAAGGCAACTCACCAGTCTCCAGAAGATGATAGGAAACATCTTTACACAGCA  
 GCCAAGTTACTACAGTGCCTGGATGAAACCCTGCCTACCATCCTCAGGTCTTCAGCAATATCCTCCAG  
 CACTGTGGTTTGAAGGGGACGGGGCAATACCACACCCAGAAGCTTGAGGAGAGGGGGCGATTGACCC  
 CCAAGTGCATGCCTCTCCTGGAATTAAGGACATTGTTCTCTACCTTTGTGATACCTGCACCACACTTTG  
 GCCTTTCTGGATATCTCCCTTTGGCTTGCCAGACCTTCAGAAAGCAGACTTTTGTACAGACTAGCT  
 TCCTTCTACGAAGCAGCAATCCCGAAATGGAGTCTGCAATTAAGAAGAGGAGGCTTGAAGATAGCAAGC  
 TTCTTGGTGACCTGTGGCAGAGGCTCTCCCATTCAGGAAGAAGCTAATGGAGATTTTCCACATCATCT  
 GAACCAGATCTGCCTCCTCCCATCCTAGAAAGCAGCTGTGACAACATTCAGGGCTTCATCGAAGAGTTC  
 CTTAGATCTTACGCTCCTTGTGCAGGAGAAGAGGTTCTCCGGGACTATGATGCACCTTCCCGTGG  
 CCGAAGACATCAGCTTGTGCAGCAGGCTCATCAGTCTTGGACGAGACGCGGACTGCCTACATCCTCCA  
 GGCAGTCGAGAGTGCATGGGAAGGGTGGACAGACGGAAGCCACAGATGCTAAAGACCCATCGGTGATT  
 GAGGAGCCTAATGGGAGCCTAACGGGGTACGGTGACAGCAGAGGCAGTCAGTCAAGCATCATCACATC  
 CGGAGAACTCGGAGGAAGAGGAGTGCATGGGAGCAGCCGCGCTGTGGCCCTGCCATGTGTGGGTGGA  
 ACTGGACTCTCATCTCCAAGTGAAGGACCTGCTGCCAGACCTTGGTGGGGCTTCATCCTGGCCTGC  
 CTGGAGTACTACCACTACGACCCAGAGCAGGTGATCAACAATATCCTGGAGGAGCGGCTGGCCCCACCC  
 TCAGCCAGCTGGACCGCAACCTAGACAGAGAAATGAAACCAGACCCTACACCCCTGCTGACGTCTCGCCA  
 CAACGTCTCCAGAATGACGAGTTTGTGTGTTACAGCAGGACTCAGTAGACCTGAGCCGGGTGCACAAG  
 GGCAAGAGCACCGAAGGAGGAAAACACGCGGAGTTTGTGAACGACAAGCGTGCAGTGGCGGCACAGC  
 GGCAGCGCTACGAGCAGTACAGCGTGGTGGTGGAGGAGGTGCCACTGCAGCCAGGCGAGAGCCTGCCCTA  
 CCACAGTGTCTACTACGAGGATGAGTACGATGACACATACGATGGCAACCAGGTGGGCGCCAATGATGCA  
 GACTCTGATGACGAGCTCATCAGCCGAGGCCATTACCATCCCTCAGGTGCTGAGAACCAAGTGCCTA  
 GAGAAGGGCAGGAGGAGGATGACGACGATGAGGAAGACGATGCTGACGAGGAGGCTCCCAAGCCGACCA  
 TTTTGTTCAGGACCCTGCAGTGTGAGAGAGAAGGCAGAAGCCAGGCGCATGGCCTTTCTCGCAAGAAA  
 GGGTACCGGCATGACAGCTCAACAGCAGTGGCCGGCAGCCCCGAGGCCATGGGCAGAGCCGCGAGACAA  
 CCCAGGAACGCAGGAAGAAGGAAGCCAAACAGGCGACAAGAGCCAACCAACCGGAGAACCATGGCCGA  
 CCGCAAGAGGAGCAAAGGCATGATCCCATCC

**ACGCGT**ACGCGGCCGCTCGAGCAGAACTCATCTCAGAAGAGGATCTGGCAGCAATGATATCCTGGATT  
 ACAAGGATGACGACGATAAGGTTTAA

**Protein Sequence:** >RC203391 protein sequence  
Red=Cloning site Green=Tags(s)

```
MPALPLDQLQITHKDPKTGKLRTPALHPEQKADRYFVLKPPPKDNIPALVEEYLERATFVANDLDWLL
ALPHDKFWCQVIFDETLQKCLDSYLRYVPRKFDEGVASAPEVVDQMQRHLHRSVFLTFLRMSTHKESKDH
ISPSAFGEILYNNFLFDIPKILDLCVLFKGNPPLLQKMGIGNIFTQQPSYSDLDELPTILQVFSNIIQ
HCGLQGDGANTTPQKLEERGRLLTPSDMPLELKDIVLYLCDTCTTLWAFLDIFPLACQTFQKHDFCYRLA
SFYEAAIPEMESAIKRRLEDSKLLGDLWQRLSHSRKKLMEIFHIILNQICLLPILESSCDNIQGFIEEF
LQIFSSLLQEKFRFLRDYDALFPVAEDISLLQQASSVLDETRTRAYILQAVESAWEGVDRRKATDAKDP
SVIEEPNGEPNGVTVAEAVSQASSHPENSEEEEECMGAAAAVGPAMCGVELDSLISQVKDLLPDLGEGF
ILACLEYYHYDPEQVINNIIEERLAPLSQLDRNLDREMKPDPPTLLTSRHNVFQNEFDVFSRDSVDL
SRVHKGKSTRKEENTRSLNDKRAVAAQRQRYEQYSVVVEEVPLQPGESLPYHSVYVEDEYDDTYDGN
QVGANDADSDDELSRRPFTIPQVLRKTPREGQEEDDDDEEDDAEEAPKPDHFVQDPAVLREKAEARR
MAFLAKKGYRHDSSSTAVAGSPRGHQSRETTQERRKKEANKATRANHNRRTMADRKRKSGMIP
```

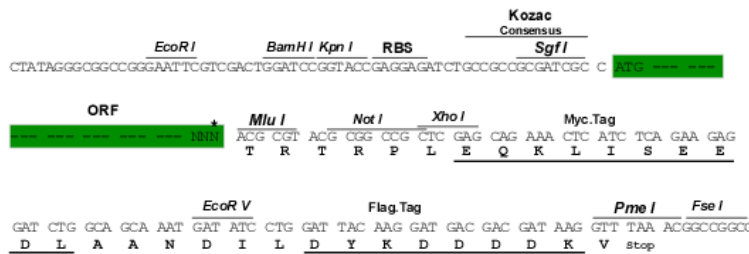
TRTRPLEQKLISEEDLAANDILDYKDDDDKV

**Chromatograms:** [https://cdn.origene.com/chromatograms/mk6202\\_g09.zip](https://cdn.origene.com/chromatograms/mk6202_g09.zip)

**Restriction Sites:** SgfI-MluI

**Cloning Scheme:**

Cloning sites used for ORF Shuttling:



\* The last codon before the Stop codon of the ORF

**ACCN:** NM\_032204

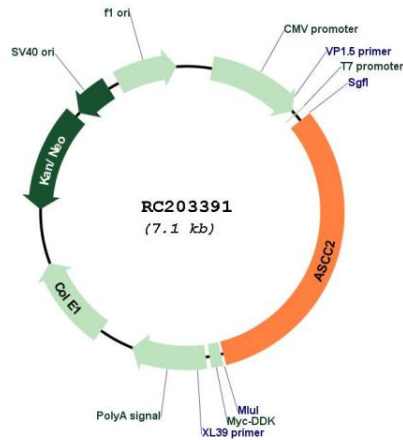
**ORF Size:** 2271 bp

**OTI Disclaimer:** The molecular sequence of this clone aligns with the gene accession number as a point of reference only. However, individual transcript sequences of the same gene can differ through naturally occurring variations (e.g. polymorphisms), each with its own valid existence. This clone is substantially in agreement with the reference, but a complete review of all prevailing variants is recommended prior to use. [More info](#)

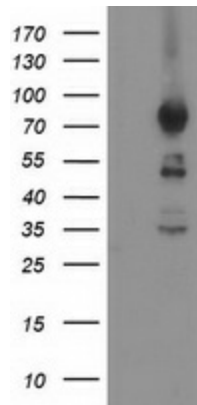
**OTI Annotation:** This clone was engineered to express the complete ORF with an expression tag. Expression varies depending on the nature of the gene.

<b>Components:</b>	The ORF clone is ion-exchange column purified and shipped in a 2D barcoded Matrix tube containing 10ug of transfection-ready, dried plasmid DNA (reconstitute with 100 ul of water).
<b>Reconstitution Method:</b>	<ol style="list-style-type: none"><li>1. Centrifuge at 5,000xg for 5min.</li><li>2. Carefully open the tube and add 100ul of sterile water to dissolve the DNA.</li><li>3. Close the tube and incubate for 10 minutes at room temperature.</li><li>4. Briefly vortex the tube and then do a quick spin (less than 5000xg) to concentrate the liquid at the bottom.</li><li>5. Store the suspended plasmid at -20°C. The DNA is stable for at least one year from date of shipping when stored at -20°C.</li></ol>
<b>Note:</b>	Plasmids are not sterile. For experiments where strict sterility is required, filtration with 0.22um filter is required.
<b>RefSeq:</b>	<u><a href="#">NM_032204.5</a></u>
<b>RefSeq Size:</b>	2840 bp
<b>RefSeq ORF:</b>	2274 bp
<b>Locus ID:</b>	84164
<b>UniProt ID:</b>	<u><a href="#">Q9H1I8</a></u>
<b>Cytogenetics:</b>	22q12.2
<b>Domains:</b>	CUE
<b>Protein Families:</b>	Druggable Genome, Transcription Factors
<b>MW:</b>	86.4 kDa
<b>Gene Summary:</b>	Plays a role in DNA damage repair as component of the ASCC complex. Recruits ASCC3 and ALKBH3 to sites of DNA damage by binding to polyubiquitinated proteins that have 'Lys-63'-linked polyubiquitin chains (PubMed:29144457). Part of the ASC-1 complex that enhances NF-kappa-B, SRF and AP1 transactivation (PubMed:12077347).[UniProtKB/Swiss-Prot Function]

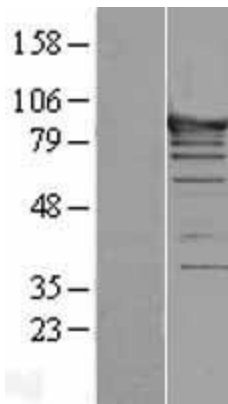
Product images:



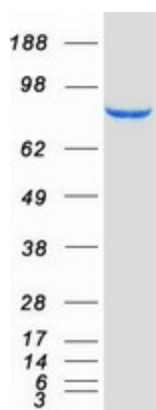
Circular map for RC203391



HEK293T cells were transfected with the pCMV6-ENTRY control (Cat# [PS100001], Left lane) or pCMV6-ENTRY ASCC2 (Cat# RC203391, Right lane) cDNA for 48 hrs and lysed. Equivalent amounts of cell lysates (5 ug per lane) were separated by SDS-PAGE and immunoblotted with anti-ASCC2 (Cat# [TA502806]). Positive lysates [LY403150] (100ug) and [LC403150] (20ug) can be purchased separately from OriGene.



Western blot validation of overexpression lysate (Cat# [LY403150]) using anti-DDK antibody (Cat# [TA50011-100]). Left: Cell lysates from untransfected HEK293T cells; Right: Cell lysates from HEK293T cells transfected with RC203391 using transfection reagent MegaTran 2.0 (Cat# [TT210002]).



Coomassie blue staining of purified ASCC2 protein (Cat# [TP303391]). The protein was produced from HEK293T cells transfected with ASCC2 cDNA clone (Cat# RC203391) using MegaTran 2.0 (Cat# [TT210002]).