

Product datasheet for **RC203390**

ZNF447 (ZSCAN18) (NM_023926) Human Tagged ORF Clone

Product data:

| | |
|---------------------------|-----------------------------------------------------|
| Product Type: | Expression Plasmids |
| Product Name: | ZNF447 (ZSCAN18) (NM_023926) Human Tagged ORF Clone |
| Tag: | Myc-DDK |
| Symbol: | ZNF447 |
| Synonyms: | ZNF447 |
| Mammalian Cell Selection: | Neomycin |
| Vector: | pCMV6-Entry (PS100001) |
| E. coli Selection: | Kanamycin (25 ug/mL) |



[View online »](#)

ORF Nucleotide Sequence:

>RC203390 ORF sequence
 Red=Cloning site Blue=ORF Green=Tags(s)

TTTTGTAATACGACTCACTATAGGGCGGCCGGGAATTCGTCGACTGGATCCGGTACCGAGGAGATCTGCC
 GCC**CGGATCGCC**

ATGTTGCCTTTGGAGAAGGCGTTTGCCTCCCCAGGAGCTCCCCAGCCCCGCCGGATCTGCCACGCCGG
 GGTGAGCAGCCGGAGTCCAGCAGGAAGAACCAGACCATCCCTGAGAGGACCCCTGCTGACCTGGAGTT
 CTCCCGCTGCGTTTCCGGGAATTTGTCTACCAGGAGGCTGCCGGGCCACCAGACCCTGGCCCGGCTG
 CATGAGCTGTGCCCCAGTGGCTGATGCCTGAGGCGCGCTCCAAGGAGCAGATGCTGGAGCTGCTGGTGC
 TGGAGCAGTTCTGGGCATCCTGCCTGATAAGGTCGGCCCTGGTGGTGGCACAGTACCCTGAGAGCTG
 CAAGAAGGCAGCCTCCCTGGTGGAGGCCCTCGCTGATGTCCTGGAAGAGCCAGGGATGCTGCTGGCTCC
 CCTGCGGGCTCATCTCAATTCTTAGCGATGGAGTGTACGAGAGGCACATGGACCCTCTGCTGCTACCAG
 GCGAGCTCGGAGCCCCAGCCAGGCCCTGGAGCTGGGGAGATCCCGGCACCTTCTGAGACACCCTGGCT
 TTCTCCGACCCCTGTTTCTGGAACAGAGGAGGGTCAGAGAAGCAAAGACCGAAGAGGACGGCCCTGCC
 AACACCGAGCAGAAGCTGAAGTCTTTCCAGAGGACCCTCAGCACCTGGGGGAGTGGGGCCACCTGGACC
 CTGCCGAGGAGAACCTGAAGAGTACCAGGAGTCTCCTGTGGGGGTATCAGCTTTCCAGCCTGACGC
 TGCTCCAGGCTGGACTGAGGAACTCCGGTTGGTGGAAAGAGATCCACAAGGAAGCAGCCTCCAGAA
 GGCGGGAGGCGCAGGAGAGCGCTGGGTGCGCCTGCGAGGAGGCCGCCCCCGGGGGTGTGCTGAGC
 TGCTACGGAGGCGCCCTGGGACGCCCTTGCCGATCCCCGTGCGGCACCACTGAGGAGGAGGAAGA
 GCAGCCTGGGAAGGCCCGGACCCGACGACCCAGGACCGGGAGTCCGACTCTGCCACCGGATCGCAG
 AGCAGTCCGTCATCCAGCAGCCTGCCCGGACAGGGGCACGGCGAAACTGGGAACCAAGAGGCGCACC
 CCGAGATGGGGACGAGCAGAGCCTCGAGGGCTCTCTAGCTCCGGCAGCAGCGCAGGCTGGAGGCCGG
 GCAGGGCCCTGGGGCTGACGAGCCGGGCTTGTCCCGGGGAAGCCCTATGCTGCGGCGAGTGGGGGAG
 GCCTTCGCGTGGCTCTCGCACCTGATGGAGCACCACAGCAGCCTGGCGCCGGAAGCGCTACGCTGTC
 AGGGTGTGGAAGACCTTCCACTTCAGCCTGGCCCTAGCCGAGCACCAGAAGACCCACGAGAAGGAGAA
 AAGCTACGCGCTGGGGGGCGCCGGGGCCCCAACCGTCCACCCGGAAGCCAGGCGGGGGCTAGGGCG
 GGCGTCCCCAGAGAGCGTGGAGGGCAGGCTCCCCCGCACCCAGAGGCGCAGAGG

ACGCGTACGCGGCCGCTCGAGCAGAACTCATCTCAGAAGAGGATCTGGCAGCAAATGATATCTGGATT
 ACAAGGATGACGACGATAAGGTTTAA

Protein Sequence:

>RC203390 protein sequence
 Red=Cloning site Green=Tags(s)

MLPLEKAFASPRSSPAPPDLPTPGSAAGVQQEETIPERTPADLEFSRLRFREFVYQEAAGPHQTLARL
 HELCRQWLMPARSKEQMLELLVLEQFLGILPDKVRPWVVAQYPESCKKAASLVEGLADVLEEPGMLLGS
 PAGSSSILSDGVYERHMDPLLLPGELASPSQALGAGEIPAPSETPWLSPDPLFLEQRRVREAKTEEDGPA
 NTEQKLSFPEDPQHLGEWHLDPAEENLKSyrKLLWGYQLSQPDAASRLDTEELRLVERDPQGSLEPE
 GGRRQESAGCACEEAAPAGVLPPELPTAPPDALADPPSGTTEEEEEEQPKAPDPQDPQDAESDSATGSQ
 RQSVIQQPAPDRGTAKLGTKRPHPEDGDEQSLEGVSSSGDSAGLEAGQPGADEPGLSRGKPYACGECGE
 AFAWLSHLMEHSSHGGRKRYACQGCWKFHFSLALAEHQKTHEKEKSYALGGARGPQPSTREAQAGARA
 GPPPEVEGEAPPAPPEAQR

TRTRPLEQKLISEEDLAANDILDYKDDDDKV

Chromatograms:

https://cdn.origene.com/chromatograms/mk6176_c06.zip

Restriction Sites:

SgfI-MluI

Cloning Scheme:


ACCN: NM_023926

ORF Size: 1530 bp

OTI Disclaimer: The molecular sequence of this clone aligns with the gene accession number as a point of reference only. However, individual transcript sequences of the same gene can differ through naturally occurring variations (e.g. polymorphisms), each with its own valid existence. This clone is substantially in agreement with the reference, but a complete review of all prevailing variants is recommended prior to use. [More info](#)

OTI Annotation: This clone was engineered to express the complete ORF with an expression tag. Expression varies depending on the nature of the gene.

Components: The ORF clone is ion-exchange column purified and shipped in a 2D barcoded Matrix tube containing 10ug of transfection-ready, dried plasmid DNA (reconstitute with 100 ul of water).

Reconstitution Method:

1. Centrifuge at 5,000xg for 5min.
2. Carefully open the tube and add 100ul of sterile water to dissolve the DNA.
3. Close the tube and incubate for 10 minutes at room temperature.
4. Briefly vortex the tube and then do a quick spin (less than 5000xg) to concentrate the liquid at the bottom.
5. Store the suspended plasmid at -20°C. The DNA is stable for at least one year from date of shipping when stored at -20°C.

RefSeq: [NM_023926.3](#), [NP_076415.2](#)

RefSeq Size: 2960 bp

RefSeq ORF: 1533 bp

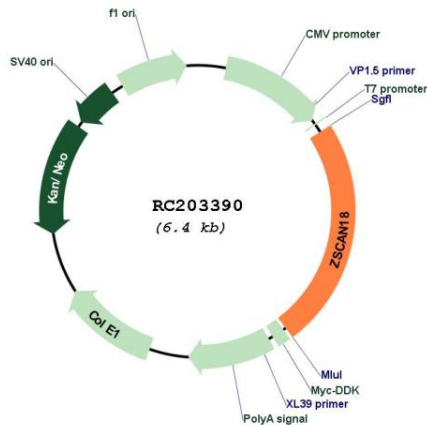
Locus ID: 65982

UniProt ID: [Q8TBC5](#)

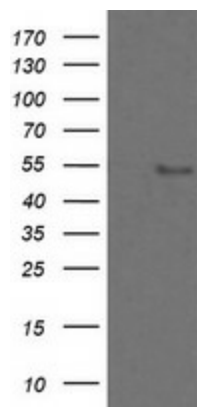
Cytogenetics: 19q13.43

Domains: LER, zf-C2H2
Protein Families: Transcription Factors
MW: 54.9 kDa
Gene Summary: May be involved in transcriptional regulation.[UniProtKB/Swiss-Prot Function]

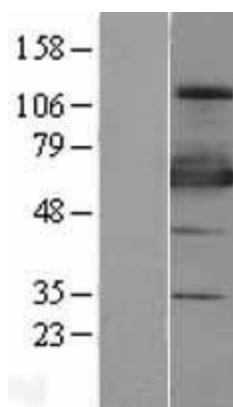
Product images:



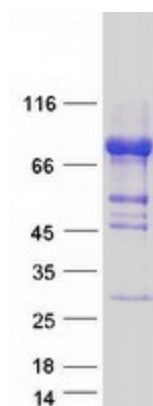
Circular map for RC203390



HEK293T cells were transfected with the pCMV6-ENTRY control (Cat# [PS100001], Left lane) or pCMV6-ENTRY ZSCAN18 (Cat# RC203390, Right lane) cDNA for 48 hrs and lysed. Equivalent amounts of cell lysates (5 ug per lane) were separated by SDS-PAGE and immunoblotted with anti-ZSCAN18(Cat# [TA505326]). Positive lysates [LY402961] (100ug) and [LC402961] (20ug) can be purchased separately from OriGene.



Western blot validation of overexpression lysate (Cat# [LY428934]) using anti-DDK antibody (Cat# [TA50011-100]). Left: Cell lysates from untransfected HEK293T cells; Right: Cell lysates from HEK293T cells transfected with [RC227637] using transfection reagent MegaTran 2.0 (Cat# [TT210002]).



Coomassie blue staining of purified ZSCAN18 protein (Cat# [TP303390]). The protein was produced from HEK293T cells transfected with ZSCAN18 cDNA clone (Cat# RC203390) using MegaTran 2.0 (Cat# [TT210002]).