

Product datasheet for RC203389

LPPR2 (PLPPR2) (NM_022737) Human Tagged ORF Clone

Product data:

Product Type:	Expression Plasmids
Product Name:	LPPR2 (PLPPR2) (NM_022737) Human Tagged ORF Clone
Tag:	Myc-DDK
Symbol:	LPPR2
Synonyms:	LPPR2; PRG4
Mammalian Cell Selection:	Neomycin
Vector:	pCMV6-Entry (PS100001)
E. coli Selection:	Kanamycin (25 ug/mL)
ORF Nucleotide Sequence:	>RC203389 ORF sequence Red=Cloning site Blue=ORF Green=Tags(s)

TTTTGTAATACGACTCACTATAGGGCGGCCGGAATTCGTCGACTGGATCCGGTACCGAGGAGATCTGCC
GCC**CGATCGCC**

ATGGCGGGAGGGAGACCGCATCTGAAGAGGAGTTTCTCCATCATCCCCTGCTTTGTCTTCGTGGAGTCGG
TGCTGTGGGCATTGTGATCCTGCTTGCTTACCGCCTGGAGTTCACGGACACCTTCCTGTGCACACCCA
GGGATTCTTCTGCTATGACAGTACCTACGCCAAGCCCTACCCAGGGCCTGAGGCTGCCAGCCGAGTGCCT
CCTGCTCTGTCTACGCACTGGTCACTGCCGGGCCACCCTCACGATCCTGCTGGGAGAGCTGGCGCGTG
CCTTTTTCCCTGCACCACCTTCAGCCGTCCCAGTCATCGGGGAGAGCACCATCGTGTCTGGGGCCTGCTG
CCGCTTACGCCCCCAGTGCGGAGGCTGGTCCGCTTCTGGGGGTCTACTCCTTCGGCCTTTCACCACG
ACCATCTTCGCCAACGCGGGGCAGGTGGTGACCGCAATCCCACGCCACACTTCCGTGTCGGTGGCCGC
CCAACACACGGCCCTGGGCTGCCTGCCACCTTCTCCGGATCGGCCAGGTCCCGACCGCTTTGTCACTGA
CCAGGGTGCTGCGCTGGCAGTCCCAGCCTCGTGGCCGCGCGCCGCGCCTTCCCCTGCAAGGATGCG
GCCCTCTGCGCTACGCGGTACCTACACAGCGATGTACGTGACTCTCGTGTCCGCGTGAAGGGCTCCC
GCCTGGTCAAACCTCGCTCTGCCTGGCCTTGTGTGCCCGCCCTTCTGGTGGGCGTGGTCCGCGTGGC
CGAGTACCGAAACCACTGGTCCGACGTGCTGGCTGGCTTCTGACAGGGGCGGCCATCGCCACCTTTTTG
GTCACCTGGCTTGTGCATAAATTTAGAGCCGGCCACCCTTGCCGAAGGCTCTCCCTGGGAGGACC
TGGGCCAAGCCCCACCATGGATAGCCCCCTCGAAAAGAACCAGGCTCGCAGGCCGCATTCGACACCG
GCACGGCTCACCCATCCAAGTCGAGAAGTGGCCCGCCGCTGGCCACC

ACGCGTACGCGGCCGCTCGAGCAGAAACTCATCTCAGAAGAGGATCTGGCAGCAAATGATATCCTGGATT
ACAAGGATGACGACGATAAGGTTTAA



[View online »](#)

Protein Sequence: >RC203389 protein sequence
Red=Cloning site Green=Tags(s)

MAGGRPHLKRSFSIIPCFVFVESVLLGIVILLAYRLEFDTDFPVHTQGFFCYDSTYAKPYPGPEAASRV
 PALVYALVTAGPTLTILLGELARAFFPAPPSAVPVIGESTIVSGACCRFPSPVRRLLVRFGLGVYSFGLFTT
 TIFANAGQVVTGNPTPHFLSVCRPNYALGCLPPSPDRPGPDRFVTDQGACAGSPSLVAAARRAFPCKDA
 ALCAYAVTYTAMYVTLVFRVKGSRLLVKPSLCLALLCPAFLVGVVRAEYRNHWSDVLAGFLTGAAIATFL
 VTCVVHNFQSRPPSGRRLSPWEDLGQAPTMDSPLEKNPRSAGRIRHRHGSPHPSRRTAPAVAT

TRTRPLEQKLISEEDLAANDILDYKDDDDKV

Chromatograms: https://cdn.origene.com/chromatograms/mk6057_e04.zip

Restriction Sites: SgfI-MluI

Cloning Scheme:



ACCN: NM_022737

ORF Size: 1029 bp

OTI Disclaimer: The molecular sequence of this clone aligns with the gene accession number as a point of reference only. However, individual transcript sequences of the same gene can differ through naturally occurring variations (e.g. polymorphisms), each with its own valid existence. This clone is substantially in agreement with the reference, but a complete review of all prevailing variants is recommended prior to use. [More info](#)

OTI Annotation: This clone was engineered to express the complete ORF with an expression tag. Expression varies depending on the nature of the gene.

Components: The ORF clone is ion-exchange column purified and shipped in a 2D barcoded Matrix tube containing 10ug of transfection-ready, dried plasmid DNA (reconstitute with 100 ul of water).

Reconstitution Method:

1. Centrifuge at 5,000xg for 5min.
2. Carefully open the tube and add 100ul of sterile water to dissolve the DNA.
3. Close the tube and incubate for 10 minutes at room temperature.
4. Briefly vortex the tube and then do a quick spin (less than 5000xg) to concentrate the liquid at the bottom.
5. Store the suspended plasmid at -20°C. The DNA is stable for at least one year from date of shipping when stored at -20°C.

RefSeq: [NM_022737.3](#)

RefSeq Size: 2748 bp

RefSeq ORF: 1032 bp

Locus ID: 64748

UniProt ID: [Q96GM1](#)

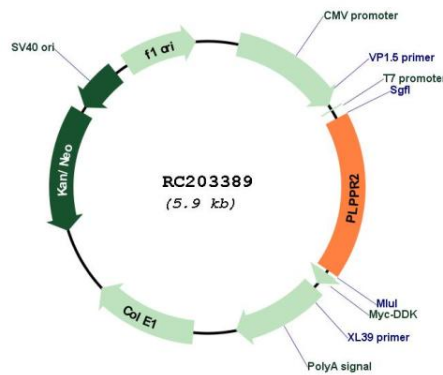
Cytogenetics: 19p13.2

Domains: acidPPc

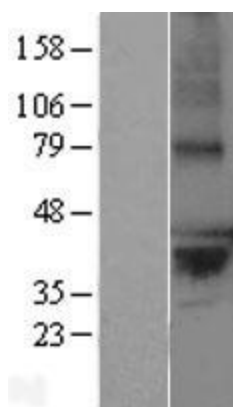
Protein Families: Druggable Genome, Transmembrane

MW: 36.9 kDa

Product images:



Circular map for RC203389



Western blot validation of overexpression lysate (Cat# [LY402938]) using anti-DDK antibody (Cat# [TA50011-100]). Left: Cell lysates from untransfected HEK293T cells; Right: Cell lysates from HEK293T cells transfected with RC203389 using transfection reagent MegaTran 2.0 (Cat# [TT210002]).