

Product datasheet for **RC203386**

INT11 (CPSF3L) (NM_017871) Human Tagged ORF Clone

Product data:

Product Type:	Expression Plasmids
Product Name:	INT11 (CPSF3L) (NM_017871) Human Tagged ORF Clone
Tag:	Myc-DDK
Symbol:	INT11
Synonyms:	CPSF3L; CPSF73L; INT11; RC-68; RC68
Mammalian Cell Selection:	Neomycin
Vector:	pCMV6-Entry (PS100001)
E. coli Selection:	Kanamycin (25 ug/mL)



[View online »](#)

ORF Nucleotide Sequence:

>RC203386 ORF sequence
 Red=Cloning site Blue=ORF Green=Tags(s)

TTTTGTAATACGACTCACTATAGGGCGGCCGGGAATTCGTCGACTGGATCCGGTACCGAGGAGATCTGCC
 GCC**CGGATCGCC**

ATGCCTGAGATCAGAGTCACGCCCTTGGGGCCGGCCAGGACGTGGGCCGAAGCTGCATCCTGGTCTCCA
 TTGCGGGCAAGAATGTCATGCTGGACTGTGGAATGCACATGGGCTTCAATGACGACCGACGCTTCCCTGA
 CTTCTCCTACATACCCAGAACGCCCGCTAACAGACTTCTGGACTGTGTGATCATTAGCCACTCCAC
 CTGGACCACTGCGGGGCACTCCCCTACTTCAGCGAGATGGTGGGCTACGACGGCCCATCTACATGACTC
 ACCCCACCCAGGCCATCTGCCCATCTTCTGGAGGACTACCGAAGATCGCCGTAGACAAGAAGGGCGA
 GGCAACTTCTCACCTCCAGATGATCAAGACTGCATGAAGAAGGTGGTGGCTGTCCACCTCCACCAG
 ACGGTCCAGGTAGATGATGAGCTGGAGATCAAGGCCTACTATGCAGGCCACGTGCTGGGGCAGCCATGT
 TCCAGATTAAGTGGGCTCAGAGTCTGTGGTCTACACGGGTGATTATAACATGACCCAGACCGACTT
 AGGAGCTGCCTGGATTGACAAGTCCCGCCCACTGCTCATCACAGAGTCCACGTACGCCACGACCATC
 CGTGAATCCAAGCGCTGCCGGGAGCGAGACTTCTGAAGAAAGTCCACGAGACCGTGGAGCGTGGTGGGA
 AGGTGCTGATACCTGTGTTTCGCGCTGGGCCGCGCCAGGAGCTCTGCATCCTCCTGGAGACCTTCTGGGA
 GCGCATGAACCTGAAGGTGCCATCTACTTCTCCACGGGGCTGACCGAGAAGGCCAACCACTACTACAAG
 CTGTTTCATCCCCTGGACCAACCAAGAATCCGCAAGACTTTTGTGAGAGGAACATGTTTGTGTTGACG
 ACATCAAGGCCTTCGACCGGGCTTTTGTGACAACCCAGGACCGATGGTGTGTTGCCACGCCAGGAAT
 GCTGCACGCTGGGCGAGTCCCTGCAGATCTCCGAAATGGGCCGAAACGAAAAGAATGTTGATCATG
 CCCGGCTACTGCGTGCAGGGCACCGTCCGCCACAAGATCCTCAGCGGGCAGCGGAAGCTCGAGATGGAG
 GGCGGCAGGTGCTGGAGGTCAAGATGCAGGTGGAGTACATGTCTCATTGAGCGCACACGCGGACGCCAAGGG
 CATCATGCAGCTGGTGGGCCAGGACGAGCGGAGAGCGTCTGCTGGTGCATGGCGAGGCCAAGAAGATG
 GAGTTCCTGAAGCAGAAGATCGAGCAGGAGCTCCGGGTCAACTGCTACATGCCGGCCAATGGCGAGACGG
 TGACGCTGCCACAAGCCCAAGCATCCCGTAGGCATCTCGTGGGGCTGCTGAAGCGGGAGATGGCGCA
 GGGGCTGCTCCCTGAGGCCAAGAAGCCTCGGCTCCTGCACGGCACCTGATCATGAAGGACAGCAACTTC
 CGGCTGGTGTCTCAGAGCAAGCCCTCAAAGAGCTGGGTCTGGCTGAGCACCAGCTGCGCTTACCTGCC
 GCGTGCACCTGCATGACACACGCAAGGAGCAGGAGACGGCATTGCGCGTCTACAGCCACCTAAGAGCGT
 CCTGAAGGACCACTGTGTGCAGCACCTCCGGACGGCTCTGTGACTGTGGAGTCCGTCTCCTCCAGGCC
 GCCGCCCTTCTGAGGACCCAGGCACCAAGGTGCTGCTGGTCTCCTGGACCTACCAGGACGAGGAGCTGG
 GGAGTTCCTCACATCTCTGCTGAAGAAGGGCCTCCCCAGGCCCCAGC

ACGCGTACGCGGGCCGCTCGAGCAGAAACTCATCTCAGAAGAGGATCTGGCAGCAAATGATATCCTGGATT
 ACAAGGATGACGACGATAAGGTTTAA

Protein Sequence:

>RC203386 protein sequence
 Red=Cloning site Green=Tags(s)

MPEIRVTPLAGAQDVGRSCILVSIAGKNVMLDCGMHMGFNDDRRFPDFSYITQNGRLTDFLDCVISHFH
 LDHCGALPYFSEMVGYPIMYTHPTQAICPILLEDYRKAIVDKKGEANFFTSQMIKDCMKVAVHLHQ
 TVQVDDELEIKAYYAGHVLGAAMFQIKVGESEVVYTGDMNTPDRHLGAAWIDKCRPNLLITESTYATTI
 RDSKRCRERDFLKKVHETVERGGKVLIPVFALGRAQELCILLETFWERMNLKVPYIFSTGLTEKANHYK
 LFIPTWNTQKIRKTFVQRNMFEFKHIAFDRAFADNPGPMVVFATPGMLHAGQSLQIFRWAGNEKNMVM
 PGYCVQGTVGHKILSGQRKLEMEGRQVLEVKMQVEYMSFSAHADAKGIMQLVQAEPEVLLVHGEAKKM
 EFLKQKIEQELRVNCPANGETVTLPTSPSIPVIGISLGLLKREMAQGLLPEAKKPRLLHGTLMKDSNF
 RLVSSSEQALKELGLAEHLRFTCRVHLHTRKEQETALRVYSHLKSVDKHCQVHLPDGVSVTVESVLLQA
 AAPSEDPGTVKLLVSWTYQDEELGSFLTSLKKGLPQAPS

TRTRPLEQKLISEEDLAANDILDYKDDDDKV

Chromatograms:

https://cdn.origene.com/chromatograms/mk6578_b09.zip

Restriction Sites: SgfI-MluI

Cloning Scheme:



ACCN: NM_017871

ORF Size: 1800 bp

OTI Disclaimer: The molecular sequence of this clone aligns with the gene accession number as a point of reference only. However, individual transcript sequences of the same gene can differ through naturally occurring variations (e.g. polymorphisms), each with its own valid existence. This clone is substantially in agreement with the reference, but a complete review of all prevailing variants is recommended prior to use. [More info](#)

OTI Annotation: This clone was engineered to express the complete ORF with an expression tag. Expression varies depending on the nature of the gene.

Components: The ORF clone is ion-exchange column purified and shipped in a 2D barcoded Matrix tube containing 10ug of transfection-ready, dried plasmid DNA (reconstitute with 100 ul of water).

- Reconstitution Method:
1. Centrifuge at 5,000xg for 5min.
 2. Carefully open the tube and add 100ul of sterile water to dissolve the DNA.
 3. Close the tube and incubate for 10 minutes at room temperature.
 4. Briefly vortex the tube and then do a quick spin (less than 5000xg) to concentrate the liquid at the bottom.
 5. Store the suspended plasmid at -20°C. The DNA is stable for at least one year from date of shipping when stored at -20°C.

RefSeq: [NM_017871.3](#), [NP_060341.2](#)

RefSeq Size: 2168 bp

RefSeq ORF: 1803 bp

Locus ID: 54973

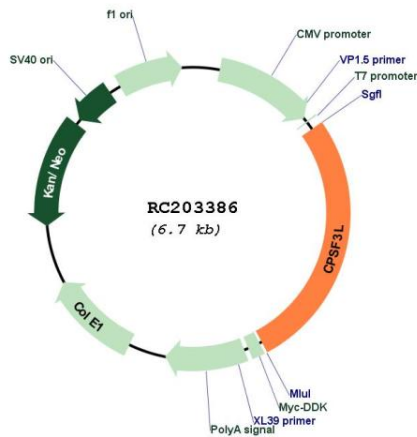
UniProt ID: [Q5TA45](#)

Cytogenetics: 1p36.33

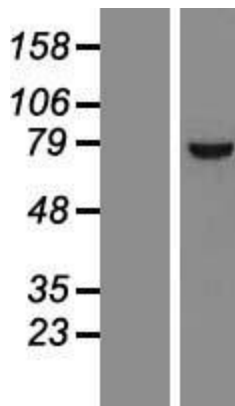
MW: 67.7 kDa

Gene Summary: The Integrator complex contains at least 12 subunits and associates with the C-terminal domain of RNA polymerase II large subunit (POLR2A; MIM 180660) and mediates the 3-prime end processing of small nuclear RNAs U1 (RNU1; MIM 180680) and U2 (RNU2; MIM 180690). INTS11, or CPSF3L, is the catalytic subunit of the Integrator complex (Baillat et al., 2005 [PubMed 16239144]).[supplied by OMIM, Mar 2008]

Product images:



Circular map for RC203386



Western blot validation of overexpression lysate (Cat# [LY413493]) using anti-DDK antibody (Cat# [TA50011-100]). Left: Cell lysates from untransfected HEK293T cells; Right: Cell lysates from HEK293T cells transfected with RC203386 using transfection reagent MegaTran 2.0 (Cat# [TT210002]).