

Product datasheet for **RC203381**

RUSF1 (NM_022744) Human Tagged ORF Clone

Product data:

Product Type:	Expression Plasmids
Product Name:	RUSF1 (NM_022744) Human Tagged ORF Clone
Tag:	Myc-DDK
Symbol:	RUSF1
Synonyms:	C16orf58; RUS
Mammalian Cell Selection:	Neomycin
Vector:	pCMV6-Entry (PS100001)
E. coli Selection:	Kanamycin (25 ug/mL)



[View online »](#)

ORF Nucleotide Sequence:

>RC203381 ORF sequence
 Red=Cloning site Blue=ORF Green=Tags(s)

TTTTGTAATACGACTCACTATAGGGCGGCCGGAATTCGTCGACTGGATCCGGTACCGAGGAGATCTGCC
 GCC**CGGATCGCC**

ATGGCTGACGACGCGGGTTTGGAGACCCGCTGTGTTCCGAGCAGTTCGGCTCCGGGGAGGCACGGGGCT
 GCCGCGCCGCGCGGACGGGAGCCTGCAGTGGGAGGTCGGGGGCTGGCGCTGGTGGGGGCTCTCCAGGGC
 CTTACCGGTCAAACCTGAAGGACGAGATGCGGGCGAAGTGGGGGCTTCCGGGGCCCCCTACCGCCCTC
 TCCGGGCTCCAGGCCGTGTTCTGCCTCAGGGCTTCCCTGATAGCGTCAGCCCGGACTACTTGCCCTACC
 AGCTGTGGGATCCGTGCAGGCGTTTGCTTCCAGCCTCTCCGGCTCCCTAGCCACCCAGGAGTCTTGCT
 GGGCATAGGGGTGGGAACGCAAAGCCACTGTTTCAGCTGCCACGGCCACTGGCTCGTAAAGATTCA
 ACTGGCATGCTGGGCCGATCGTCTTGCCTGGTGGAAAGGGAGCAAAGTGGACTGCAATGCCAAGCAGT
 GGAGGCTTTTTGCGGACATCCTCAATGACGTAGCCATGTTCTTGAGATTATGGCTCCTGTATGCCAAT
 CTGTTTACCATGACCGTCTCCACCAGCAACCTAGCCAAGTGCATCGTGAGTGTGCTGGTGGGGCCACT
 CGGGCTGCCCTGACCGTGCACCAGGCTCGGAGGAACAACATGGCTGACGTGTAGCCAAGGACAGCAGCC
 AGGAGACGCTGGTGAACCTGGCGGGGCTCTTGGTCAAGCCTCTGATGCTCCCTCTGGTGTAGGTTGCC
 TGGCTTACGCTTGGATGTTTCTTCTCCTCACTGCCCTCCACATCTACGCCAACTACCGCGCGTCCGA
 GCCCTGGTCATGGAGACCTTGAACGAAGGCCGGCTCCGGCTGGTCTGAAGCACTACCTCAGAGGGGAG
 AGGTAAGTCTGACCAACTGCAGCAATCGCATGGAGCCGCTGTGGACAGGTTTCTGGCCAGCTCCGCTCT
 ATCCCTGGGGTCCCCTTACACCGCTTGGTCTCCAGTGTCTTGGAGTGCAGCAGCTGGTTGAGGGGCAC
 CAAGAATCCTACCTCCTGCTGGGACCAGTCAAAAACCAGGTACAGGTAGTTCTGAACCAGAAGGCAG
 GCCCAAGACCATCCTAAGGGCCGCCACACATGGGCTGATGCTTGGGGCCCTGCAGGGAGATGGACCCCT
 TCCAGCAGAGCTGGAGGAGCTGAGGAACCGGGTCCGGGCAAGTCTAAGAAAGAGAGCTGGGTCTGCTG
 AAGGAGACACGAAAGTGTGGACATGCTGTTCCAAAGTCTTGAAGGACTGCAGGATGCCGGCTGGA
 AGACCGAGAAGCACCAGCTAGAGGTGGATGAGTGGAGGGCCACATGGCTTCTGTCTCCCGAAAAGAGGT
 CTTG

ACGCGTACGCGGGCGCTCGAGCAGAAACTCATCTCAGAAGAGGATCTGGCAGCAAATGATATCCTGGATT
 ACAAGGATGACGACGATAAGGTTTAA

Protein Sequence:

>RC203381 protein sequence
 Red=Cloning site Green=Tags(s)

MADDAGLETPLCSEQFSGEARGCRAAADGSLQWEVGGWRWWGLSRAFTVKPEGRDAGEVVGASGAPSPPL
 SGLQAVFLPQGFDPDSVSPDYLPYQLWDSVQAFASSLSGSLATQAVLLGIGVGNAKATVSAATATWLKDS
 TGMLGRIVFAWWKGSKLDCAKQWRLFADILNDVAMFLEIMAPVCPICFTMTVSTSNLAKCIVSVAGGAT
 RAALTVHQARRNMADVSAKDSSQETLVNLAGLLVSLMLPLVSGCPGFLGCFFFLTALHIYANYRAVR
 ALVMETLNEGRLRLVLKHYLQRGEVLDPTAANRMEPLWTGFWPAPSLSLGVPLHRLVSSVFELQQLVEGH
 QESYLLCWDQSQNVQVVLNPKAGPKTILRAATHGLMLGALQGDGPLPAELEELRNRVRAGPKKESWVVV
 KETHEVLDMFLPKFLKGLQDAGWKTEKHQLEVDEWRATWLLSPEKKVL

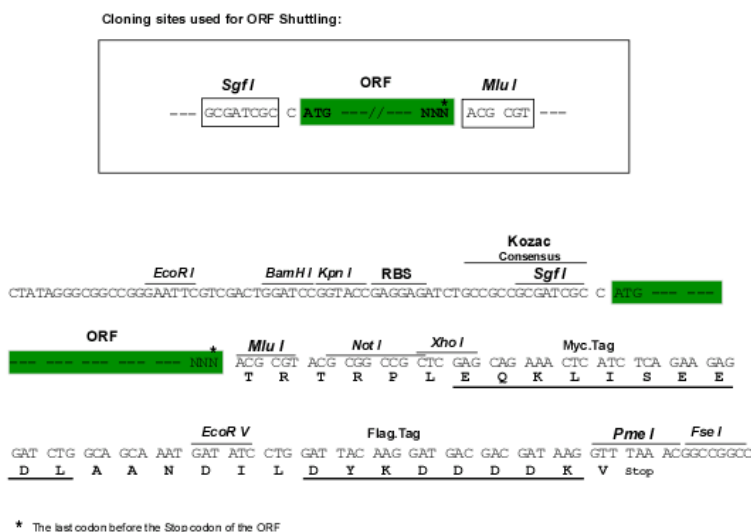
TRTRPLEQKLISEEDLAANDILDYKDDDDKV

Chromatograms:

https://cdn.origene.com/chromatograms/mk6566_d09.zip

Restriction Sites:

Sgfl-MluI

Cloning Scheme:


ACCN: NM_022744

ORF Size: 1404 bp

OTI Disclaimer: The molecular sequence of this clone aligns with the gene accession number as a point of reference only. However, individual transcript sequences of the same gene can differ through naturally occurring variations (e.g. polymorphisms), each with its own valid existence. This clone is substantially in agreement with the reference, but a complete review of all prevailing variants is recommended prior to use. [More info](#)

OTI Annotation: This clone was engineered to express the complete ORF with an expression tag. Expression varies depending on the nature of the gene.

Components: The ORF clone is ion-exchange column purified and shipped in a 2D barcoded Matrix tube containing 10ug of transfection-ready, dried plasmid DNA (reconstitute with 100 ul of water).

Reconstitution Method:

1. Centrifuge at 5,000xg for 5min.
2. Carefully open the tube and add 100ul of sterile water to dissolve the DNA.
3. Close the tube and incubate for 10 minutes at room temperature.
4. Briefly vortex the tube and then do a quick spin (less than 5000xg) to concentrate the liquid at the bottom.
5. Store the suspended plasmid at -20°C. The DNA is stable for at least one year from date of shipping when stored at -20°C.

RefSeq: [NM_022744.4](#)

RefSeq Size: 2829 bp

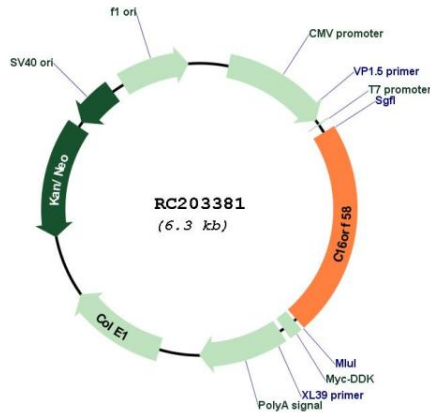
RefSeq ORF: 1407 bp

Locus ID: 64755

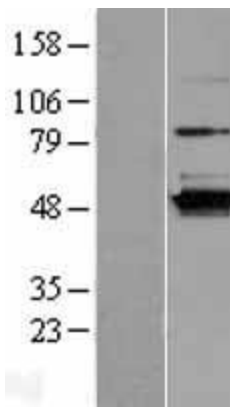
UniProt ID: [Q96GQ5](#)

Cytogenetics: 16p11.2

Domains: DUF647
Protein Families: Transmembrane
MW: 51 kDa
Gene Summary: This gene encodes a putative transmembrane protein containing a conserved DUF647 domain that may be involved in protein-protein interaction. The encoded protein is related to a plant protein that participates in ultraviolet B light-sensing during root morphogenesis. [provided by RefSeq, Feb 2013]

Product images:


Circular map for RC203381



Western blot validation of overexpression lysate (Cat# [LY411583]) using anti-DDK antibody (Cat# [TA50011-100]). Left: Cell lysates from untransfected HEK293T cells; Right: Cell lysates from HEK293T cells transfected with RC203381 using transfection reagent MegaTran 2.0 (Cat# [TT210002]).