

Product datasheet for **RC203380**

DUS3L (NM_020175) Human Tagged ORF Clone

Product data:

Product Type:	Expression Plasmids
Product Name:	DUS3L (NM_020175) Human Tagged ORF Clone
Tag:	Myc-DDK
Symbol:	DUS3L
Synonyms:	DUS3
Mammalian Cell Selection:	Neomycin
Vector:	pCMV6-Entry (PS100001)
E. coli Selection:	Kanamycin (25 ug/mL)



[View online »](#)

ORF Nucleotide
Sequence:

>RC203380 ORF sequence
Red=Cloning site Blue=ORF Green=Tags(s)

TTTTGTAATACGACTCACTATAGGGCGGCCGGAATTCGTCGACTGGATCCGGTACCGAGGAGATCTGCC
GCC**CGGATCGCC**

ATGGCGGAGGGAACGGCGGAGGCTCCTCTAGAGAATGGTGGTGGTGGCGACTCGGGAGCCGGAGCTTTGG
AACGAGGAGTGGCGCCATTAAGCGTCAATACCTCACCACCAAGGAGCAGTTTCACCAATTCCTGGAAGC
CAAAGGGCAGGAGAAGACTTGCCGGGAAACCGAGGTAGGAGACCCTGCTGGCAATGAGCTGGCTGAGCCT
GAGGCTAAGCGGATCCGACTGGAGGATGGACAGACGGCGGACGGGCAGACGGAGGAGGCAGCAGAGCCCG
GGGAGCAGCTACAGACTCAGAAGAGGGCCCGGGGACAAAACAAGGGCCGGCCCATGTGAAGCCACGAA
CTACGACAAGAACAGGCTGTGTCCCTCCCTAATCCAGGAGTGGCTGCTAAGTGTTCCTCGGTGATCGC
TGCCGCTTTCTGCACGACGTGGGGCGCTACCTGGAGACCAAGCCGGCCGACCTGGGCCCCCGCTGCGTGC
TCTTCGAGACCTTCGGCCGGTGCCCTACGGCGTGACCTGCCGCTTCGCTGGGGCCACCTGGGGCCCGA
GGGACAGAACCTGGTGCAGGAGGAGTTGGCGGCCCGGGACCCAGCCCCGTCATCCGCAACGGCCTG
GACAAAGCCCTGCAGCAGCAGCTGCGGAAGCGCAGGTCCGCTTCGAGCGAGCTGAGCAGGCCCTGCGCC
GGTTTCAGCCAGGGCCCCACACCCGCTGCCGCTGTCCCGAGGGCACGGCAGCCGAGGGCGCTCCCAGGCA
GGAAAACCTGTGGTGGCCAGCAGTCCCCGAGGGCCGGGCACTAGCACCCCTCCCAGCAGCCCGTGC GG
ACCTGCGGGCCCTGACGGATGAGGACGTGGTCAAGGCTGCGGCCCTGTGAGAAGAAGCGGCTGGACATCC
GTGGCAAACCTTACCTGGCCCCCTCACACGTGTGGAACTGCCCTTCCGACGGATCTGCAAGCGCTT
CGGGGCGGATGTGACATGTGGAGAGATGGCCGTCTGCACCAACCTGTGCAGGGCCAGATGTCCGAGTGG
GCCCTACTCAAACGCCACCAGTGTGAGGACATCTTTGGCGTCCAGCTGGAGGGCGCCTTCCCCGACCA
TGACCAAAGTGTCCGAGCTGCTGAGCCGACCGTGGAGGTGGACTTTGTGGACATCAACGTCGGCTGCC
CATCGACCTCGTGTACAAGAAGGGTGGGGCTGTGCCCTCATGAATCGCTCCACCAAGTTCAGCAGATC
GTCCGTGGCATGAACCAGGTGCTGGATGTGCCGCTGACTGTGAAGATCCGCACAGGCGTCCAGGAGCGTG
TGAACCTGGCGCACCGCCTGCTGCCGAGCTGCGGGACTGGGGCGTGGCACTCGTCACGCTCCACGGCCG
CTCTCGGGAGCAGCGCTACACCAAGCTAGCTGACTGGCAGTACATCGAGGAGTGCCTGCAGGCCCGCAGC
CCCATGCCCTGTTTCGAAATGGGGACATCTTGTCAATTTGAGGATGCCAACCGGCCATGCAGACTGGTG
TCACCGGATCATGATTGCCCGTGGCGCCCTGCTCAAGCCGTGGCTTTACGGAGATCAAGGAGCAGCG
GCACTGGGACATCTCGTCGTCCGAGCGCCTGGACATCCTGCGGGACTTCACCAACTACGGCCTGGAGCAC
TGGGGCTCGGACACGCAGGGCGTGGAGAAGACCCGGCGCTTTCTGCTCGAGTGGCTGCTTCTCTGTGCC
GGTACGTGCCCGTGGGGCTGCTGGAGCGGCTCCCACAGAGGATCAACGAGCGGCCCCCTACTACCTGGG
CCGCGACTACCTGGAGACGCTGATGGCCAGCCAGAAGGCAGCCGACTGGATCCGCATCAGCGAGATGCTC
CTTGGGCCAGTGCSCCCAGCTTCGCTTCTTGGCGAAGCACAAGGCCAACGCGTACAAG

AG**CGGACCG**ACGCGTACGCGGCCGCTCGAGCAGAACTCATCTCAGAAGAGGATCTGGCAGCAAATGATATCC
TGGATTACAAGGATGACGACGATAAGGTTTAA

Protein Sequence: >RC203380 protein sequence
Red=Cloning site Green=Tags(s)

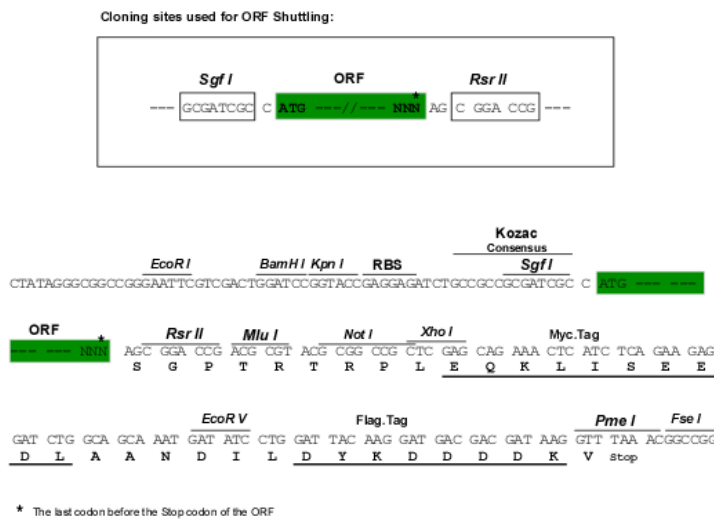
MAEGTAEAPLENGGGDSGAGALERGVAPIKRQYLTTKEQFHQFLEAKGQEKTCRETEVGDPAGNELAEP
 EAKRIRLEDGQTADGQTEEAEPGEQLQTQKRARGQNKGRPHVKPTNYDKNRLCPSLIQESAACKFFGDR
 CRFLHDVGRYLETKPADLGPRCVLFETFGRCPYGVTCRFAGAHLGPEGQNLVQEELAAARGTQPPSIRNGL
 DKALQQQLRKREVRFERAEQALRRFSQGPTPAAAVPEGTAEGAPRQENCGAQQVPAGPGTSTPPSSPVR
 TCGPLTDEDVVRLRPCEKKRLDIRGKLYLAPLTTGCLPFRRICKRFADVTCGEMAVCTNLLQGQMSW
 ALLKRHQCEDIFGVQLEGAFPDTMTKCAELL SRTVEVDFVDINVGCPIDL VYKKGCCALMNRSTKFQI
 VRGMNQVLDVPLTVKIRTGVQERVNLARLLPELRDWGVALVTLHGRSREQRYTKLADWQYIEECVQAAS
 PMPFLFGNGDILSFEDANRAMQTGVTGIMIARGALLKPWLFTEIKEQRHWDISSERLDILRDFNTYGLEH
 WGSDTQGVKTRRFLLEWL SFLCRYVPVGLLERLPQRINERPPYYLGRDYLETLMASQKAADWIRISEML
 LGPVPPSFAFLPKHKANAYK

SGPTRTRPLEQKLISEEDLAANDILDYKDDDDKV

Chromatograms: https://cdn.origene.com/chromatograms/mk6798_e02.zip

Restriction Sites: SgfI-RsrII

Cloning Scheme:



ACCN: NM_020175

ORF Size: 1950 bp

OTI Disclaimer: The molecular sequence of this clone aligns with the gene accession number as a point of reference only. However, individual transcript sequences of the same gene can differ through naturally occurring variations (e.g. polymorphisms), each with its own valid existence. This clone is substantially in agreement with the reference, but a complete review of all prevailing variants is recommended prior to use. [More info](#)

OTI Annotation: This clone was engineered to express the complete ORF with an expression tag. Expression varies depending on the nature of the gene.

Components: The ORF clone is ion-exchange column purified and shipped in a 2D barcoded Matrix tube containing 10ug of transfection-ready, dried plasmid DNA (reconstitute with 100 ul of water).

Reconstitution Method:

1. Centrifuge at 5,000xg for 5min.
2. Carefully open the tube and add 100ul of sterile water to dissolve the DNA.
3. Close the tube and incubate for 10 minutes at room temperature.
4. Briefly vortex the tube and then do a quick spin (less than 5000xg) to concentrate the liquid at the bottom.
5. Store the suspended plasmid at -20°C. The DNA is stable for at least one year from date of shipping when stored at -20°C.

RefSeq: [NM_020175.1](#), [NP_064560.1](#)

RefSeq Size: 2127 bp

RefSeq ORF: 1953 bp

Locus ID: 56931

UniProt ID: [Q96G46](#)

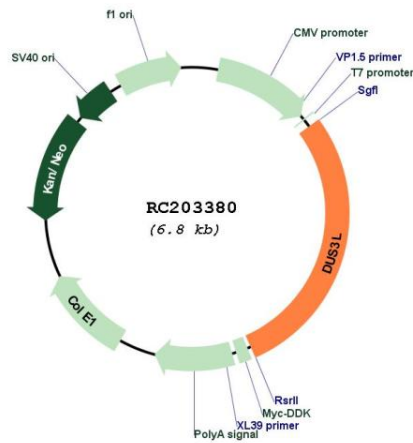
Cytogenetics: 19p13.3

Domains: zf-CCCH, Dus

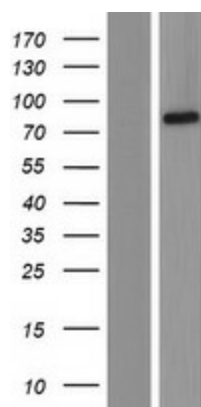
MW: 72.5 kDa

Gene Summary: Catalyzes the synthesis of dihydrouridine, a modified base found in the D-loop of most tRNAs.[UniProtKB/Swiss-Prot Function]

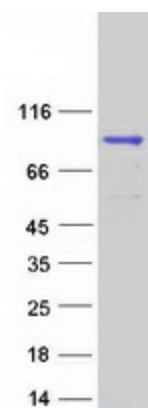
Product images:



Circular map for RC203380



Western blot validation of overexpression lysate (Cat# [LY412599]) using anti-DDK antibody (Cat# [TA50011-100]). Left: Cell lysates from un-transfected HEK293T cells; Right: Cell lysates from HEK293T cells transfected with RC203380 using transfection reagent MegaTran 2.0 (Cat# [TT210002]).



Coomassie blue staining of purified DUS3L protein (Cat# [TP303380]). The protein was produced from HEK293T cells transfected with DUS3L cDNA clone (Cat# RC203380) using MegaTran 2.0 (Cat# [TT210002]).