

Product datasheet for **RC203378**

BIN3 (NM_018688) Human Tagged ORF Clone

Product data:

Product Type:	Expression Plasmids
Product Name:	BIN3 (NM_018688) Human Tagged ORF Clone
Tag:	Myc-DDK
Symbol:	BIN3
Mammalian Cell Selection:	Neomycin
Vector:	pCMV6-Entry (PS100001)
E. coli Selection:	Kanamycin (25 ug/mL)
ORF Nucleotide Sequence:	>RC203378 ORF sequence Red=Cloning site Blue=ORF Green=Tags(s)

TTTTGTAATACGACTCACTATAGGGCGGCCGGAATTCGTCGACTGGATCCGGTACCGAGGAGATCTGCC
GCC**CGATCGCC**

ATGAGTTGGATTCCTTTAAGATTGGGCAGCCCAAGAAACAGATTGTGCCAAAACAGTGGAGAGAGACT
TTGAAAGGGAGTATGGAAAACCTCAGCAGCTGGAAGAGCAGACCCGGAGGCTGCAGAAAGACATGAAGAA
GAGCACCGACGCAGACCTGGCCATGTCAAATCTGCCGTGAAGATATCCTTGGACTTACTCTCCAATCCC
CTCTGTGAGCAAGACCAGGACCTTCTGAACATGGTGACGGCCCTGGACACGGCCATGAAGCGGATGGATG
CCTTCAATCAGGAAAAGGTGAACCAGATCCAGAAGACTGTGATCGAGCCCTTAAAAAAGTTCGGCAGTGT
CTTCCCGAGCCTCAACATGGCTGTGAAGAGGCGGGAACAGGCCTTGCAGGACTACAGGAGGCTGCAGGCC
AAGGTGGAGAAGTATGAGGAAAAGGAGAAGACGGGGCCAGTGCTGGCCAAGCTCCACCAGGCACGAGAGG
AGCTGCGGCTGTGCGGGAGGACTTTGAAGCCAAGAACAGGCAGCTGCTGGAGGAGATGCCGCGCTTCTA
CGGCAGCCGCTCGACTACTTCCAGCCCAGCTTTGAGTCCCTCATCCGAGCTCAGGTTGTGTACTACTCG
GAAATGCACAAGATCTTTGGAGACCTGTCCATCAGCTTGACCAGCCAGGCCACTCCGATGAGCAGCGGG
AGCGGGAGAACGAGGCCAAACTCAGTGAGCTCCGGGCCCTCTCCATTGTGGCCGATGAC

ACGCGTACGCGGCCGCTCGAGCAGAAACTCATCTCAGAAGAGGATCTGGCAGCAAATGATATCCTGGATT
ACAAGGATGACGACGATAAGGTTTAA



[View online »](#)

Reconstitution Method:

1. Centrifuge at 5,000xg for 5min.
2. Carefully open the tube and add 100ul of sterile water to dissolve the DNA.
3. Close the tube and incubate for 10 minutes at room temperature.
4. Briefly vortex the tube and then do a quick spin (less than 5000xg) to concentrate the liquid at the bottom.
5. Store the suspended plasmid at -20°C. The DNA is stable for at least one year from date of shipping when stored at -20°C.

RefSeq: [NM_018688.3](#), [NP_061158.1](#)

RefSeq Size: 1863 bp

RefSeq ORF: 762 bp

Locus ID: 55909

UniProt ID: [Q9NQY0](#)

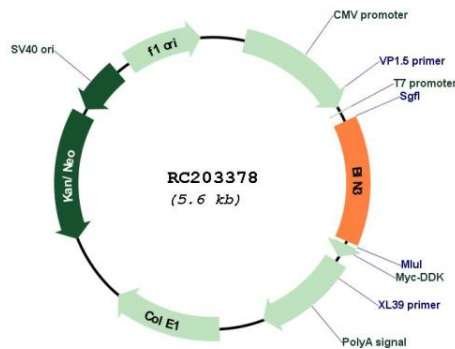
Cytogenetics: 8p21.3

Domains: BAR, BAR

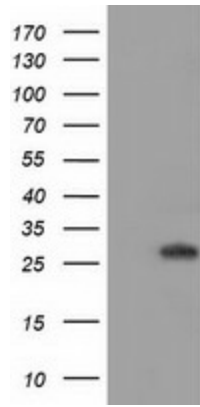
MW: 29.7 kDa

Gene Summary: The product of this gene is a member of the BAR domain protein family. The encoded protein is comprised solely of a BAR domain which is predicted to form coiled-coil structures and proposed to mediate dimerization, sense and induce membrane curvature, and bind small GTPases. BAR domain proteins have been implicated in endocytosis, intracellular transport, and a diverse set of other processes. [provided by RefSeq, Jul 2008]

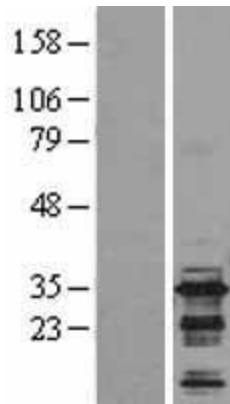
Product images:



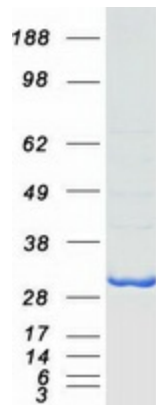
Circular map for RC203378



HEK293T cells were transfected with the pCMV6-ENTRY control (Cat# [PS100001], Left lane) or pCMV6-ENTRY BIN3 (Cat# RC203378, Right lane) cDNA for 48 hrs and lysed. Equivalent amounts of cell lysates (5 ug per lane) were separated by SDS-PAGE and immunoblotted with anti-BIN3 (Cat# [TA502145]). Positive lysates [LY402705] (100ug) and [LC402705] (20ug) can be purchased separately from OriGene.



Western blot validation of overexpression lysate (Cat# [LY402705]) using anti-DDK antibody (Cat# [TA50011-100]). Left: Cell lysates from untransfected HEK293T cells; Right: Cell lysates from HEK293T cells transfected with RC203378 using transfection reagent MegaTran 2.0 (Cat# [TT210002]).



Coomassie blue staining of purified BIN3 protein (Cat# [TP303378]). The protein was produced from HEK293T cells transfected with BIN3 cDNA clone (Cat# RC203378) using MegaTran 2.0 (Cat# [TT210002]).