

## Product datasheet for **RC203367**

### C2orf43 (LDAH) (NM\_021925) Human Tagged ORF Clone

#### Product data:

Product Type:	Expression Plasmids
Product Name:	C2orf43 (LDAH) (NM_021925) Human Tagged ORF Clone
Tag:	Myc-DDK
Symbol:	C2orf43
Synonyms:	C2orf43; hLDAH
Mammalian Cell Selection:	Neomycin
Vector:	pCMV6-Entry (PS100001)
E. coli Selection:	Kanamycin (25 ug/mL)
ORF Nucleotide Sequence:	>RC203367 ORF sequence Red=Cloning site Blue=ORF Green=Tags(s)

TTTTGTAATACGACTCACTATAGGGCGGCCGGAATTCGTCGACTGGATCCGGTACCGAGGAGATCTGCC  
GCC**CGATCGCC**

ATGGACTCAGAACTCAAGGAAGAAATTCCTGTGCATGAGGAATTCATTTTGTGTGGTGGAGCCGAAACCC  
AGGTTCTAAAATGTGGGCCCTGGACAGACCTCTTTCATGATCAAAGTGCAAAGGCCTAAGCTGCTTAT  
TTTCATTATTCTGGTAACCCAGGTTTTCTGCCTTTTATGTGCCATTTGCAAAGCCTTATACTCTTTG  
ACAAACAGACGCTTCCAGTTTGGACTATCAGTCATGCTGGGCATGCGTTGGCTCCCAAAGACAAGAAGA  
TTCTTACAACATCAGAGGATTCAAACGCTCAAGAAATTAAGGACATTTATGGACTAAATGGACAAATAGA  
GCACAACTAGCTTTCCTGAGAACTCATGTGCCAAAGGACATGAAACTTGTGCTCATTGGCCATTCAATA  
GGCAGCTATTTACACTTCAGATGCTGAAGCGAGTCCCTGAGCTCCCGTAATTCGTGCCTTTCTGCCT  
TTCCAACAATTGAACGAATGTCTGAGTCACCCAATGGCAGAATTGCCACTCCACTTTTGTGCTGGTTTCG  
ATATGTTCTCTATGTTACTGGCTACTTATTATTGAAACCGTGTCTGAGACAATCAAGTCCTTGCTAATC  
AGAAGGGCCCTCAAGTAATGAACCTAGAGAATGAATTTTACCATTGAATATATTAGAACCATTCTGCC  
TTGCTAATGCTGCCTACCTTGGGGCCAAGAAATGATGGAGGTGGTGAAGAGAGATGACGAAACCATAAA  
GGAGCATTTATGTAAGCTTACATTTTATTATGGTACTATAGATCCTTGGTGTCCAAAAGAGTACTATGAA  
GACATTAAGAAGGATTTTCCAGAAGGAGACATTCGACTCTGTGAGAAAAACATACCTCATGCTTTCATCA  
CCCATTTAAACCAGGAAATGGCAGACATGATTGCTGACTCCCTAAAGGATGACTTGTCCAAAATG

**ACGCGT**ACGCGGCCGCTCGAGCAGAAACTCATCTCAGAAGAGGATCTGGCAGCAATGATATCCTGGATT  
ACAAGGATGACGACGATAAGGTTTAA



[View online »](#)

**Protein Sequence:** >RC203367 protein sequence  
Red=Cloning site Green=Tags(s)

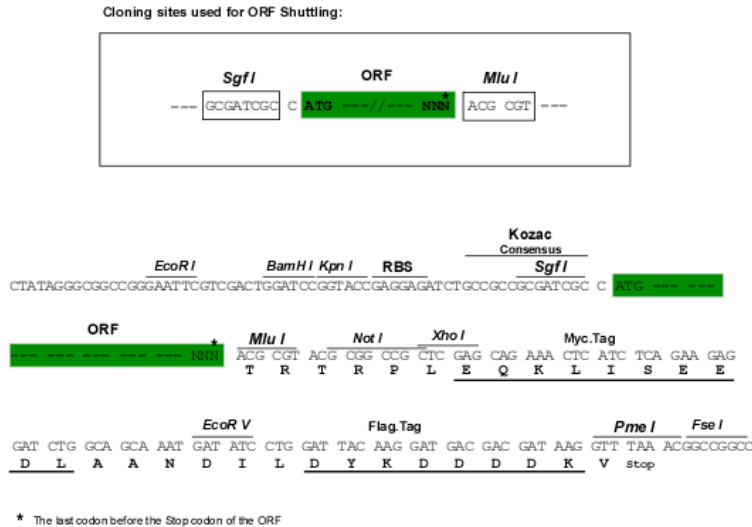
MDSSELKEEIPVHEEFILCGGAETQVLKCGPWTDLFHDQSVKRPKLLIFIIPGNPGFSAFYVPFAKALYSL  
 TNRRFPVWTISHAGHALAPKDKKILTTSEDSNAQEIKDIYGLNGQIEHKLAFLRTHVPKDKMLVLIGHSI  
 GSYFTLQMLKRVPELPIVIRAFLLFPTIERMSESPNGRIATPLLWFVRYLVYVTGYLLLKPCPETIKSLLI  
 RRGLQVMNLENEFSPLNILEPFCLANAAYLGGQEMMEVVKRDETIKEHLCKLTFYYGTIDPWCPKEYYE  
 DIKKDFPEGDIRLCEKNIPHAFITHFNQEMADMIADSLKDDLSKM

TRTRPLEQKLISEEDLAANDILDYKDDDDKV

**Chromatograms:** [https://cdn.origene.com/chromatograms/mk6428\\_c07.zip](https://cdn.origene.com/chromatograms/mk6428_c07.zip)

**Restriction Sites:** SgfI-MluI

**Cloning Scheme:**



**ACCN:** NM\_021925

**ORF Size:** 975 bp

**OTI Disclaimer:** The molecular sequence of this clone aligns with the gene accession number as a point of reference only. However, individual transcript sequences of the same gene can differ through naturally occurring variations (e.g. polymorphisms), each with its own valid existence. This clone is substantially in agreement with the reference, but a complete review of all prevailing variants is recommended prior to use. [More info](#)

**OTI Annotation:** This clone was engineered to express the complete ORF with an expression tag. Expression varies depending on the nature of the gene.

**Components:** The ORF clone is ion-exchange column purified and shipped in a 2D barcoded Matrix tube containing 10ug of transfection-ready, dried plasmid DNA (reconstitute with 100 ul of water).

**Reconstitution Method:**

1. Centrifuge at 5,000xg for 5min.
2. Carefully open the tube and add 100ul of sterile water to dissolve the DNA.
3. Close the tube and incubate for 10 minutes at room temperature.
4. Briefly vortex the tube and then do a quick spin (less than 5000xg) to concentrate the liquid at the bottom.
5. Store the suspended plasmid at -20°C. The DNA is stable for at least one year from date of shipping when stored at -20°C.

**RefSeq:** [NM\\_021925.4](#)

**RefSeq Size:** 3963 bp

**RefSeq ORF:** 978 bp

**Locus ID:** 60526

**UniProt ID:** [Q9H6V9](#)

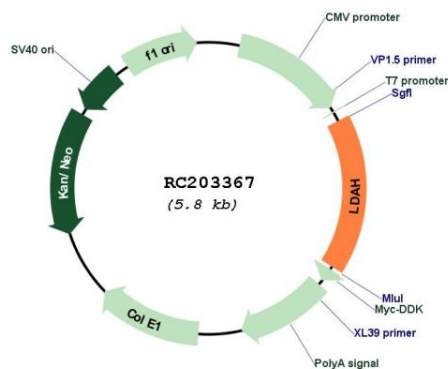
**Cytogenetics:** 2p24.1

**Protein Families:** Druggable Genome

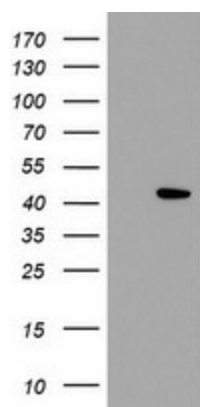
**MW:** 37.3 kDa

**Gene Summary:** Serine lipid hydrolase associated with lipid droplets. Highly expressed in macrophage-rich areas in atherosclerotic lesions, suggesting that it could promote cholesterol ester turnover in macrophages.[UniProtKB/Swiss-Prot Function]

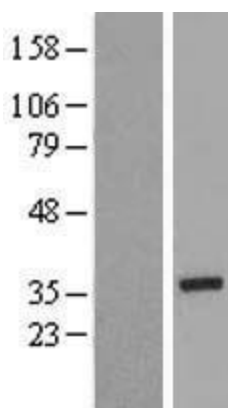
### Product images:



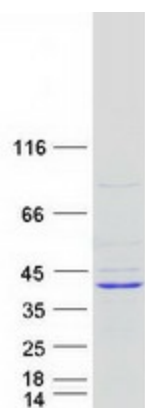
Circular map for RC203367



HEK293T cells were transfected with the pCMV6-ENTRY control (Cat# [PS100001], Left lane) or pCMV6-ENTRY C2orf43 (Cat# RC203367, Right lane) cDNA for 48 hrs and lysed. Equivalent amounts of cell lysates (5 ug per lane) were separated by SDS-PAGE and immunoblotted with anti-C2orf43(Cat# [TA504833]). Positive lysates [LY411891] (100ug) and [LC411891] (20ug) can be purchased separately from OriGene.



Western blot validation of overexpression lysate (Cat# [LY411891]) using anti-DDK antibody (Cat# [TA50011-100]). Left: Cell lysates from untransfected HEK293T cells; Right: Cell lysates from HEK293T cells transfected with RC203367 using transfection reagent MegaTran 2.0 (Cat# [TT210002]).



Coomassie blue staining of purified LDAH protein (Cat# [TP303367]). The protein was produced from HEK293T cells transfected with LDAH cDNA clone (Cat# RC203367) using MegaTran 2.0 (Cat# [TT210002]).