

## Product datasheet for **RC203366**

### Syndecan 2 (SDC2) (NM\_002998) Human Tagged ORF Clone

#### Product data:

**Product Type:** Expression Plasmids  
**Product Name:** Syndecan 2 (SDC2) (NM\_002998) Human Tagged ORF Clone  
**Tag:** Myc-DDK  
**Symbol:** Syndecan 2  
**Synonyms:** CD362; HSPG; HSPG1; SYND2  
**Mammalian Cell Selection:** Neomycin  
**Vector:** pCMV6-Entry (PS100001)  
**E. coli Selection:** Kanamycin (25 ug/mL)  
**ORF Nucleotide Sequence:** >RC203366 ORF sequence  
 Red=Cloning site Blue=ORF Green=Tags(s)

TTTTGTAATACGACTCACTATAGGGCGGCCGGAATTCGTCGACTGGATCCGGTACCGAGGAGATCTGCC  
 GCC**CGATCGCC**

ATCGCGCGCGGTGGATCCTGCTCACCTTGGGCTTGGTGGCTGCGTGTGCGGGAGTCGAGAGCAGAGC  
 TGACATCTGATAAAGACATGTACCTTGACAACAGCTCCATTGAAGAAGCTTCAGGAGTGTATCCTATTGA  
 TGACGATGACTACGTTCTGCGTCTGGCTCGGGAGCTGATGAGGATGTAGAGAGTCCAGAGCTGACAACA  
 TCTCGACCACTTCAAAGATACTGTTGACTAGTGTCTCCAAAAGTGAAAACACGACGCTGAATATAC  
 AGAACAAGATACCTGCTCAGACAAAGTCACCTGAAGAACTGATAAAGAGAAAGTTCACCTCTGACTC  
 AGAAAGGAAAATGGACCCAGCCGAGAGGATACAAATGTGTATACTGAGAAACACTCAGACAGTCTGTTT  
 AAACGGACAGAAGTCTAGCAGCTGTCATTGCTGGTGGAGTTATTGGCTTTCTTTGCAATTTTTCTTA  
 TCCTGCTGTTGGTGTATCGCATGAGAAAGAAGGATGAAGGAAGCTATGACCTTGAGAACGCAAACCATC  
 CAGTGTGCTTATCAGAAGGCACCTACTAAGGAGTTTTATGCG

**ACGCGT**ACGCGGCCGCTCGAGCAGAACTCATCTCAGAAGAGGATCTGGCAGCAAATGATATCCTGGATT  
 ACAAGGATGACGACGATAAGGTTTAA

**Protein Sequence:** >RC203366 protein sequence  
 Red=Cloning site Green=Tags(s)

MRRAWILLTLGLVACVSAESRAELTSDKMYLDNSSIEEASGVYPIDDDYASASGSGADEDVESPELTT  
 SRPLPKILLTSAAPKVETTLNIQNKIPAQTKSPEETDKEKVHLSDSERKMDPAEEDTNVYTEKHSLSL  
 KRTEVLA AVIAGGVIGFLFAIFLILLVYMRKKDEGSYDLGERKPSSAAYQKAPTKEFYA

**TRTRPLEQKLI**SEEDLAANDILDYKDDDDKV



[View online »](#)

**Chromatograms:** [https://cdn.origene.com/chromatograms/mk6125\\_c11.zip](https://cdn.origene.com/chromatograms/mk6125_c11.zip)

**Restriction Sites:** SgfI-MluI

**Cloning Scheme:**



**ACCN:** NM\_002998

**ORF Size:** 603 bp

**OTI Disclaimer:** The molecular sequence of this clone aligns with the gene accession number as a point of reference only. However, individual transcript sequences of the same gene can differ through naturally occurring variations (e.g. polymorphisms), each with its own valid existence. This clone is substantially in agreement with the reference, but a complete review of all prevailing variants is recommended prior to use. [More info](#)

**OTI Annotation:** This clone was engineered to express the complete ORF with an expression tag. Expression varies depending on the nature of the gene.

**Components:** The ORF clone is ion-exchange column purified and shipped in a 2D barcoded Matrix tube containing 10ug of transfection-ready, dried plasmid DNA (reconstitute with 100 ul of water).

**Reconstitution Method:**

1. Centrifuge at 5,000xg for 5min.
2. Carefully open the tube and add 100ul of sterile water to dissolve the DNA.
3. Close the tube and incubate for 10 minutes at room temperature.
4. Briefly vortex the tube and then do a quick spin (less than 5000xg) to concentrate the liquid at the bottom.
5. Store the suspended plasmid at -20°C. The DNA is stable for at least one year from date of shipping when stored at -20°C.

**RefSeq:** [NM\\_002998.4](#)

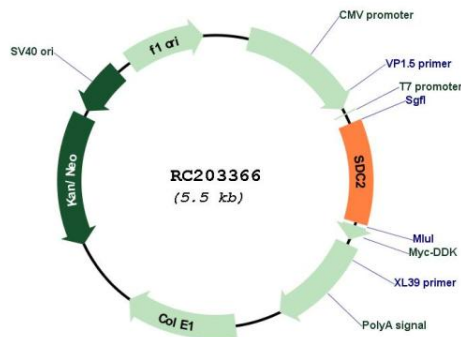
**RefSeq Size:** 3485 bp

**RefSeq ORF:** 606 bp

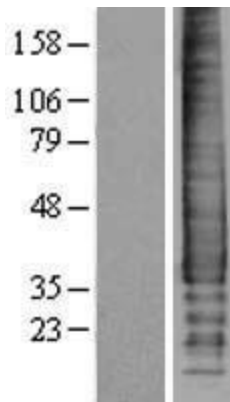
**Locus ID:** 6383

**UniProt ID:** [P34741](#)  
**Cytogenetics:** 8q22.1  
**Protein Families:** Druggable Genome, Transmembrane  
**Protein Pathways:** Cell adhesion molecules (CAMs), ECM-receptor interaction  
**MW:** 22.2 kDa  
**Gene Summary:** The protein encoded by this gene is a transmembrane (type I) heparan sulfate proteoglycan and is a member of the syndecan proteoglycan family. The syndecans mediate cell binding, cell signaling, and cytoskeletal organization and syndecan receptors are required for internalization of the HIV-1 tat protein. The syndecan-2 protein functions as an integral membrane protein and participates in cell proliferation, cell migration and cell-matrix interactions via its receptor for extracellular matrix proteins. Altered syndecan-2 expression has been detected in several different tumor types. [provided by RefSeq, Jul 2008]

### Product images:



Circular map for RC203366



Western blot validation of overexpression lysate (Cat# [LY401050]) using anti-DDK antibody (Cat# [TA50011-100]). Left: Cell lysates from untransfected HEK293T cells; Right: Cell lysates from HEK293T cells transfected with RC203366 using transfection reagent MegaTran 2.0 (Cat# [TT210002]).