

Product datasheet for RC203360

TM2D3 (NM_025141) Human Tagged ORF Clone

Product data:

Product Type:	Expression Plasmids
Product Name:	TM2D3 (NM_025141) Human Tagged ORF Clone
Tag:	Myc-DDK
Symbol:	TM2D3
Synonyms:	BLP2
Mammalian Cell Selection:	Neomycin
Vector:	pCMV6-Entry (PS100001)
E. coli Selection:	Kanamycin (25 ug/mL)
ORF Nucleotide Sequence:	>RC203360 ORF sequence Red=Cloning site Blue=ORF Green=Tags(s)

TTTTGTAATACGACTCACTATAGGGCGGCCGGAATTCGTCGACTGGATCCGGTACCGAGGAGATCTGCC
GCC**CGATCGCC**

ATGGCGGGAGGGGTGCGCCCGCTGCGGGGCCTCCGCGCCTTGTGTGCGGTGCTGCTTCTCTCGCAGT
TCTGCATTCTGTCGGGCGGTGAAAGTACTGAAATCCCACCTTATGTGATGAAGTGTCCGAGCAATGGTTT
GTGTAGCAGGCTTCTGCAGACTGTATAGACTGCACAACAAATTTCTCTGTACCTATGGGAAGCCTGTC
ACTTTTGACTGTGCAGTAAAACCATCTGTTACCTGTGTTGATCAAGACTTCAAATCCAAAAGAACTTCA
TCATTAACATGACTTGCAGATTTTGTGGCAGCTTCTGAAACAGATTACGAGTGTACCAACTCCACCAG
CTGCATGACGGTGTCTGTCTCGGCAGCGCTACCCTGCCAACTGCACGGTGCGGGACCAGTCCACTGC
TTGGGTAACCGTACTTTTCCAAAATGCTATATTGCAATTGGACTGGAGGCTATAAGTGGTCTACGGCTC
TGGCTTAAGCATCACCTCGGTGGGTTTGGAGCAGACCGTTTCTACCTGGGCCAGTGGCGGGAAGGCCT
CGGCAAGCTCTTCAGCTTCGGTGGCCTGGGAATATGGACGCTGATAGACGTCCTGCTCATTGGAGTTGGC
TATGTTGGACCAGCAGATGGCTCTTTGTACATT

ACGCGTACGCGGCGCTCGAGCAGAACTCATCTCAGAAGAGGATCTGGCAGCAAATGATATCTGGATT
ACAAGGATGACGACGATAAGGTTTAA



[View online »](#)

Protein Sequence: >RC203360 protein sequence
Red=Cloning site Green=Tags(s)

MAGGVRPLRGLRALCRVLLFLSQFCILSGGESTEIPPYVMKCPNSGLCSRLPADCIDCTTNFSCTYGKPV
 TFDCAVKPSVTCVDQDFKSQKNFIINMTCRFCWQLPETDYECTNSTSCMTVSCPQRYPANCTVRDHYHC
 LGNRTFPKMLYCNWTGGYKWSTALALSTITLGGFGADRFYLGQWREGLGKLFSGGLGIWTLIDVLLIGVG
 YVGPADGSLYI

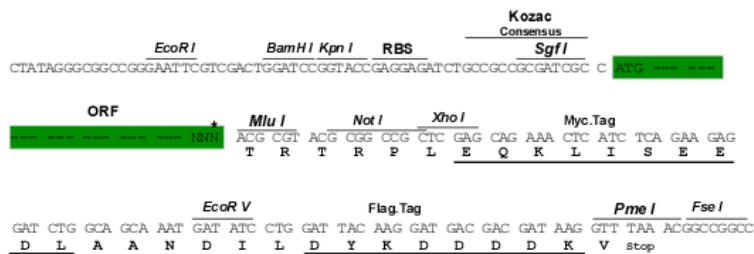
TRTRPLEQKLISEEDLAANDILDYKDDDDKV

Chromatograms: https://cdn.origene.com/chromatograms/mk6414_g09.zip

Restriction Sites: SgfI-MluI

Cloning Scheme:

Cloning sites used for ORF Shuttling:



* The last codon before the Stop codon of the ORF

ACCN: NM_025141

ORF Size: 663 bp

OTI Disclaimer: The molecular sequence of this clone aligns with the gene accession number as a point of reference only. However, individual transcript sequences of the same gene can differ through naturally occurring variations (e.g. polymorphisms), each with its own valid existence. This clone is substantially in agreement with the reference, but a complete review of all prevailing variants is recommended prior to use. [More info](#)

OTI Annotation: This clone was engineered to express the complete ORF with an expression tag. Expression varies depending on the nature of the gene.

Components: The ORF clone is ion-exchange column purified and shipped in a 2D barcoded Matrix tube containing 10ug of transfection-ready, dried plasmid DNA (reconstitute with 100 ul of water).

Reconstitution Method:

1. Centrifuge at 5,000xg for 5min.
2. Carefully open the tube and add 100ul of sterile water to dissolve the DNA.
3. Close the tube and incubate for 10 minutes at room temperature.
4. Briefly vortex the tube and then do a quick spin (less than 5000xg) to concentrate the liquid at the bottom.
5. Store the suspended plasmid at -20°C. The DNA is stable for at least one year from date of shipping when stored at -20°C.

RefSeq: [NM_025141.3](#)

RefSeq Size: 1343 bp

RefSeq ORF: 666 bp

Locus ID: 80213

UniProt ID: [Q9BRN9](#)

Cytogenetics: 15q26.3

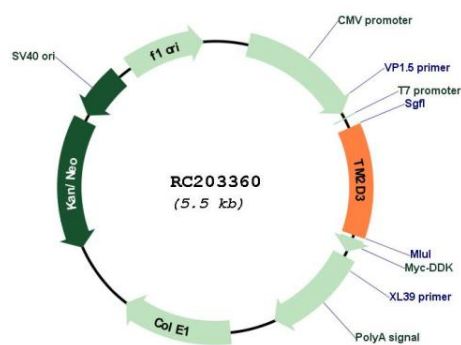
Domains: TM2

Protein Families: Druggable Genome, Transmembrane

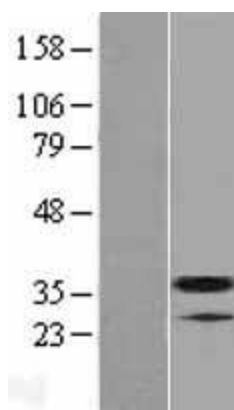
MW: 24.4 kDa

Gene Summary: The protein encoded by this gene contains a structural module related to that of the seven transmembrane domain G protein-coupled receptor superfamily. This protein has sequence and structural similarities to the beta-amyloid binding protein (BBP), but, unlike BBP, it does not regulate a response to beta-amyloid peptide. This protein may have regulatory roles in cell death or proliferation signal cascades. Several alternatively spliced transcript variants of this gene are described but the full length nature of some variants has not been determined. Multiple polyadenylation sites have been found in this gene. [provided by RefSeq, Jul 2008]

Product images:



Circular map for RC203360



Western blot validation of overexpression lysate (Cat# [LY410881]) using anti-DDK antibody (Cat# [TA50011-100]). Left: Cell lysates from untransfected HEK293T cells; Right: Cell lysates from HEK293T cells transfected with RC203360 using transfection reagent MegaTran 2.0 (Cat# [TT210002]).