

Product datasheet for **RC203351**

TOMM22 (NM_020243) Human Tagged ORF Clone

Product data:

Product Type: Expression Plasmids
Product Name: TOMM22 (NM_020243) Human Tagged ORF Clone
Tag: Myc-DDK
Symbol: TOMM22
Synonyms: 1C9-2; MST065; MSTP065; TOM22
Mammalian Cell Selection: Neomycin
Vector: pCMV6-Entry (PS100001)
E. coli Selection: Kanamycin (25 ug/mL)
ORF Nucleotide Sequence: >RC203351 ORF sequence
Red=Cloning site Blue=ORF Green=Tags(s)

TTTTGTAATACGACTCACTATAGGGCGCCGGGAATTCGTCGACTGGATCCGGTACCGAGGAGATCTGCC
GCC**CGATCGCC**

ATGGCTGCCGCCGTGCTGCTGCCGGTGCAGGGGAACCCAGTCCCCGGACGAATTGCTCCGAAAGGCG
ACGCGGAGAAGCCTGAGGAGGAGCTGGAGGAGGACGACGATGAGGAGCTAGATGAGACCCGTGCGGAGAG
ACTATGGGGCCTGACGGAGATGTTCCGGAGAGGGTCCGGTCCGCGGCCGGAGCCACTTTTGATCTTTCC
CTCTTTGTGGCTCAGAAAATGTACAGGTTTTCCAGGGCAGCCTTGTGGATTGGGACCACTCCTTTATGA
TCCTGGTTCTTCCGTTGTCTTTGAGACGGAGAAGTTGCAAATGGAGCAACAGCAGCAACTGCAGCAGCG
GCAGATACTTCTAGGACCTAACACAGGGCTCTCAGGAGGAATGCCAGGGGCTCTACCCTCACTTCTGGA
AAGATC

ACGCGTACGCGGCCGCTCGAGCAGAACTCATCTCAGAAGAGGATCTGGCAGCAAATGATATCCTGGATT
ACAAGGATGACGACGATAAGGTTTAA

Protein Sequence: >RC203351 protein sequence
Red=Cloning site Green=Tags(s)

MAAAVAAAGAGEPQSPDELLPKGDAEKPEEELEEDDEELDETLSERLWGLTEMPERVRSAAAGATFDLS
LFVAQKMYRFSRAALWIGTTSFMILVLPVVFETEKLMQEQQLQQRQILLGPNTGLSGGMPPALPSLPG
KI

TRTRPLEQKLISEEDLAANDILDYKDDDDKV

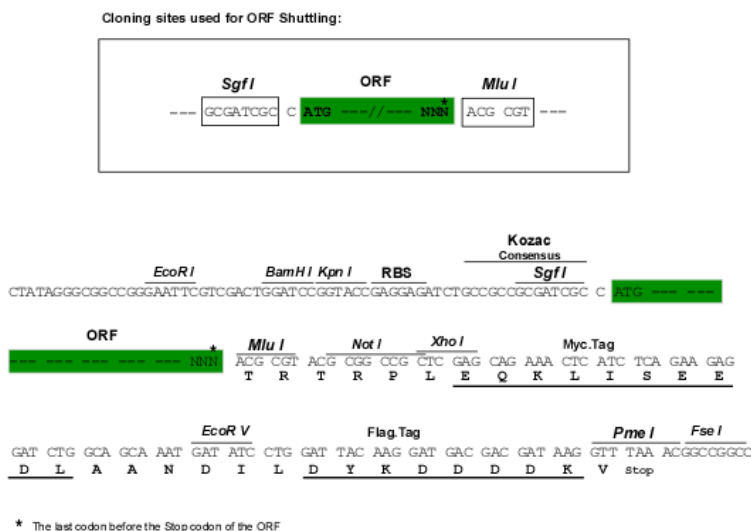
Chromatograms: https://cdn.origene.com/chromatograms/mk6057_b08.zip



[View online >](#)

Restriction Sites: SgfI-MluI

Cloning Scheme:



ACCN: NM_020243

ORF Size: 426 bp

OTI Disclaimer: The molecular sequence of this clone aligns with the gene accession number as a point of reference only. However, individual transcript sequences of the same gene can differ through naturally occurring variations (e.g. polymorphisms), each with its own valid existence. This clone is substantially in agreement with the reference, but a complete review of all prevailing variants is recommended prior to use. [More info](#)

OTI Annotation: This clone was engineered to express the complete ORF with an expression tag. Expression varies depending on the nature of the gene.

Components: The ORF clone is ion-exchange column purified and shipped in a 2D barcoded Matrix tube containing 10ug of transfection-ready, dried plasmid DNA (reconstitute with 100 ul of water).

Reconstitution Method:

1. Centrifuge at 5,000xg for 5min.
2. Carefully open the tube and add 100ul of sterile water to dissolve the DNA.
3. Close the tube and incubate for 10 minutes at room temperature.
4. Briefly vortex the tube and then do a quick spin (less than 5000xg) to concentrate the liquid at the bottom.
5. Store the suspended plasmid at -20°C. The DNA is stable for at least one year from date of shipping when stored at -20°C.

RefSeq: [NM_020243.5](#)

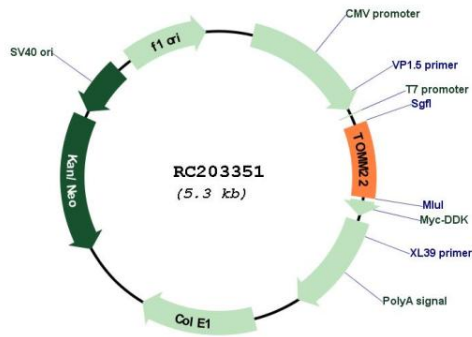
RefSeq Size: 1396 bp

RefSeq ORF: 429 bp

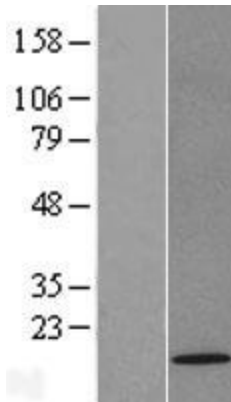
Locus ID: 56993

UniProt ID: [Q9NS69](#)
Cytogenetics: 22q13.1
Protein Families: Druggable Genome, Transmembrane
MW: 15.5 kDa
Gene Summary: The protein encoded by this gene is an integral membrane protein of the mitochondrial outer membrane. The encoded protein interacts with TOMM20 and TOMM40, and forms a complex with several other proteins to import cytosolic preproteins into the mitochondrion. [provided by RefSeq, Jul 2008]

Product images:



Circular map for RC203351



Western blot validation of overexpression lysate (Cat# [LY412577]) using anti-DDK antibody (Cat# [TA50011-100]). Left: Cell lysates from untransfected HEK293T cells; Right: Cell lysates from HEK293T cells transfected with RC203351 using transfection reagent MegaTran 2.0 (Cat# [TT210002]).