

Product datasheet for **RC203347**

MNF1 (UQCC2) (NM_032340) Human Tagged ORF Clone

Product data:

Product Type: Expression Plasmids
Product Name: MNF1 (UQCC2) (NM_032340) Human Tagged ORF Clone
Tag: Myc-DDK
Symbol: MNF1
Synonyms: bA6B20.2; C6orf125; C6orf126; Cbp6; M19; MC3DN7; MNF1
Mammalian Cell Selection: Neomycin
Vector: pCMV6-Entry (PS100001)
E. coli Selection: Kanamycin (25 ug/mL)
ORF Nucleotide Sequence: >RC203347 ORF sequence
 Red=Cloning site Blue=ORF Green=Tags(s)

TTTGTAAATACGACTCACTATAGGGCGGCCGGAATTCGTCGACTGGATCCGGTACCGAGGAGATCTGCC
 GCC**CGATCGC**

ATGGCGGCCAGCCGGTACCGCGTTTTCTTAAGCTCTGTGAGGAATGGCCAGTGGACGAGACCAAACGGG
 GCCGGGACTTGGGCGCTTACCTGCGACAGCGGTAGCACAGGCCTTCGGGAGGGAGAGAATACCCAGGT
 TGCAGAGCCTGAGGCCTGTGATCAGATGTACGAGAGCTTAGCGCGACTCCATTCAAACACTACTACAAACAC
 AAGTACCCTCGCCCCAGAGACACCAGCTTCAGTGGCCTGTCGTTGGAAGAGTACAAGCTGATCCTGTCCA
 CAGACACCTTGAAGAGCTTAAGGAAATAGATAAAGGCATGTGGAAGAACTGCAGGAGAAGTTTGCCCC
 CAAGGGTCTGAGGAGGATCATAAGGCC

ACGCGTACGCGGCCGCTCGAGCAGAACTCATCTCAGAAGAGGATCTGGCAGCAAATGATATCCTGGATT
 ACAAGGATGACGACGATAAGGTTTAA

Protein Sequence: >RC203347 protein sequence
 Red=Cloning site Green=Tags(s)
 MAASRYRRFLKLCEEWPVDETKRGRDLGAYLRQVAQAFREGENTQVAEPEACDQMYESLARLHSNYYKH
 KYPRPRDTSFSGLSLEEYKLILSTDTLEELKEIDKGMWKKLQEKFAPKGPEEDHKA

TRTRPLEQKLISEEDLAANDILDYKDDDDKV

Chromatograms: https://cdn.origene.com/chromatograms/mk6416_h05.zip

Restriction Sites: SgfI-MluI



View online »

Cloning Scheme:


ACCN: NM_032340

ORF Size: 378 bp

OTI Disclaimer: The molecular sequence of this clone aligns with the gene accession number as a point of reference only. However, individual transcript sequences of the same gene can differ through naturally occurring variations (e.g. polymorphisms), each with its own valid existence. This clone is substantially in agreement with the reference, but a complete review of all prevailing variants is recommended prior to use. [More info](#)

OTI Annotation: This clone was engineered to express the complete ORF with an expression tag. Expression varies depending on the nature of the gene.

Components: The ORF clone is ion-exchange column purified and shipped in a 2D barcoded Matrix tube containing 10ug of transfection-ready, dried plasmid DNA (reconstitute with 100 ul of water).

Reconstitution Method:

1. Centrifuge at 5,000xg for 5min.
2. Carefully open the tube and add 100ul of sterile water to dissolve the DNA.
3. Close the tube and incubate for 10 minutes at room temperature.
4. Briefly vortex the tube and then do a quick spin (less than 5000xg) to concentrate the liquid at the bottom.
5. Store the suspended plasmid at -20°C. The DNA is stable for at least one year from date of shipping when stored at -20°C.

Note: Plasmids are not sterile. For experiments where strict sterility is required, filtration with 0.22um filter is required.

RefSeq: [NM_032340.4](#)

RefSeq Size: 1355 bp

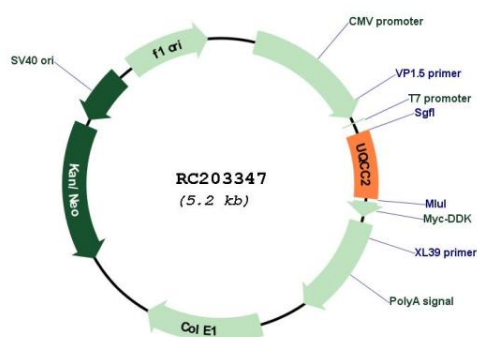
RefSeq ORF: 381 bp

Locus ID: 84300
 UniProt ID: [Q9BRT2](#)
 Cytogenetics: 6p21.31

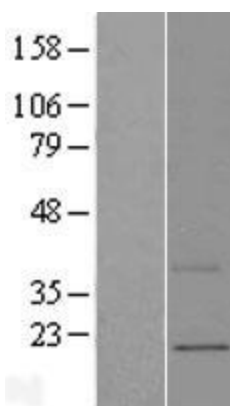
MW: 14.9 kDa

Gene Summary: This gene encodes a nucleoid protein localized to the mitochondria inner membrane. The encoded protein affects regulation of insulin secretion, mitochondrial ATP production, and myogenesis through modulation of mitochondrial respiratory chain activity. [provided by RefSeq, Oct 2012]

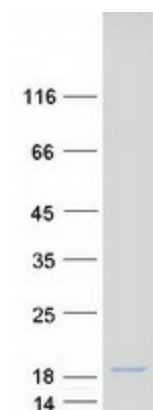
Product images:



Circular map for RC203347



Western blot validation of overexpression lysate (Cat# [LY410177]) using anti-DDK antibody (Cat# [TA50011-100]). Left: Cell lysates from untransfected HEK293T cells; Right: Cell lysates from HEK293T cells transfected with RC203347 using transfection reagent MegaTran 2.0 (Cat# [TT210002]).



Coomassie blue staining of purified UQCC2 protein (Cat# [TP303347]). The protein was produced from HEK293T cells transfected with UQCC2 cDNA clone (Cat# RC203347) using MegaTran 2.0 (Cat# [TT210002]).