

Product datasheet for **RC203346**

XTP4 (MIEN1) (NM_032339) Human Tagged ORF Clone

Product data:

Product Type:	Expression Plasmids
Product Name:	XTP4 (MIEN1) (NM_032339) Human Tagged ORF Clone
Tag:	Myc-DDK
Symbol:	XTP4
Synonyms:	C17orf37; C35; ORB3; RDX12; XTP4
Mammalian Cell Selection:	Neomycin
Vector:	pCMV6-Entry (PS100001)
E. coli Selection:	Kanamycin (25 ug/mL)
ORF Nucleotide Sequence:	>RC203346 ORF sequence Red=Cloning site Blue=ORF Green=Tags(s)

TTTTGTAATACGACTCACTATAGGGCGGCCGGAATTCGTCGACTGGATCCGGTACCGAGGAGATCTGCC
GCC**CGATCGCC**

ATGAGCGGGGAGCCGGGGCAGACGTCCGTAGCGCCCCCTCCCGAGGAGGTCGAGCCGGGCAGTGGGGTCC
GCATCGTGGTGGAGTACTGTGAACCTGCGGCTTCGAGGCGACCTACCTGGAGCTGGCCAGTGCTGTGAA
GGAGCAGTATCCGGGCATCGAGATCGAGTCGCGCCTCGGGGGCACAGGTGCCTTTGAGATAGAGATAAAT
GGACAGCTGGTGTCTCCAAGCTGGAGAATGGGGCTTCCCTATGAGAAAGATCTATTGAGGCCATCC
GAAGAGCCAGTAATGGAGAAACCCTAGAAAAGATCACCAACAGCCGTCCTCCCTCGCTCATCCTG

ACGCGTACGCGGCCGCTCGAGCAGAAACTCATCTCAGAAGAGGATCTGGCAGCAAATGATATCCTGGATT
ACAAGGATGACGACGATAAGGTTTAA

Protein Sequence:	>RC203346 protein sequence Red=Cloning site Green=Tags(s)
-------------------	--

MSGEPGQTSVAPPPEEVEPGSGVRIVVEYCEPCGFEATYLELASAVKEQYPGIEIESRLGGTGAFEIEIN
GQLVFSKLENGFPYEKDLIEAIRRASNGETLEKITNSRPPCVIL

TRTRPLEQK**L**ISEEDLAANDILDYKDDDDKV

Chromatograms: https://cdn.origene.com/chromatograms/mk6416_c02.zip

Restriction Sites: SgfI-MluI



[View online »](#)

Cloning Scheme:


ACCN: NM_032339

ORF Size: 345 bp

OTI Disclaimer: The molecular sequence of this clone aligns with the gene accession number as a point of reference only. However, individual transcript sequences of the same gene can differ through naturally occurring variations (e.g. polymorphisms), each with its own valid existence. This clone is substantially in agreement with the reference, but a complete review of all prevailing variants is recommended prior to use. [More info](#)

OTI Annotation: This clone was engineered to express the complete ORF with an expression tag. Expression varies depending on the nature of the gene.

Components: The ORF clone is ion-exchange column purified and shipped in a 2D barcoded Matrix tube containing 10ug of transfection-ready, dried plasmid DNA (reconstitute with 100 ul of water).

Reconstitution Method:

1. Centrifuge at 5,000xg for 5min.
2. Carefully open the tube and add 100ul of sterile water to dissolve the DNA.
3. Close the tube and incubate for 10 minutes at room temperature.
4. Briefly vortex the tube and then do a quick spin (less than 5000xg) to concentrate the liquid at the bottom.
5. Store the suspended plasmid at -20°C. The DNA is stable for at least one year from date of shipping when stored at -20°C.

Note: Plasmids are not sterile. For experiments where strict sterility is required, filtration with 0.22um filter is required.

RefSeq: [NM_032339.5](#)

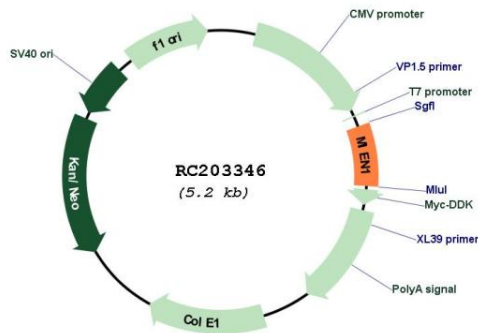
RefSeq Size: 781 bp

RefSeq ORF: 348 bp

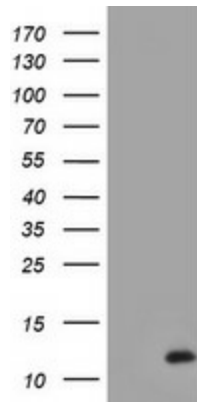
Locus ID: 84299
UniProt ID: [Q9BRT3](#)
Cytogenetics: 17q12
MW: 12.4 kDa

Gene Summary: Increases cell migration by inducing filopodia formation at the leading edge of migrating cells. Plays a role in regulation of apoptosis, possibly through control of CASP3. May be involved in a redox-related process.[UniProtKB/Swiss-Prot Function]

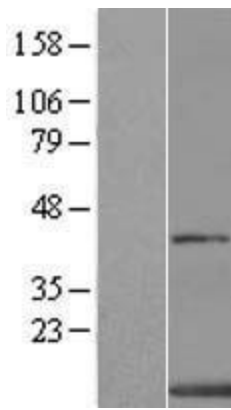
Product images:



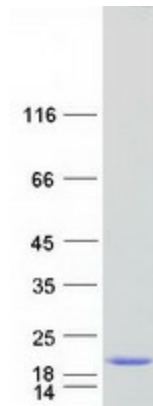
Circular map for RC203346



HEK293T cells were transfected with the pCMV6-ENTRY control (Cat# [PS100001], Left lane) or pCMV6-ENTRY C17orf37 (Cat# RC203346, Right lane) cDNA for 48 hrs and lysed. Equivalent amounts of cell lysates (5 ug per lane) were separated by SDS-PAGE and immunoblotted with anti-C17orf37(Cat# [TA800021]). Positive lysates [LY410176] (100ug) and [LC410176] (20ug) can be purchased separately from OriGene.



Western blot validation of overexpression lysate (Cat# [LY410176]) using anti-DDK antibody (Cat# [TA50011-100]). Left: Cell lysates from untransfected HEK293T cells; Right: Cell lysates from HEK293T cells transfected with RC203346 using transfection reagent MegaTran 2.0 (Cat# [TT210002]).



Coomassie blue staining of purified MIEN1 protein (Cat# [TP303346]). The protein was produced from HEK293T cells transfected with MIEN1 cDNA clone (Cat# RC203346) using MegaTran 2.0 (Cat# [TT210002]).