

## Product datasheet for **RC203345**

### CCDC34 (NM\_080654) Human Tagged ORF Clone

#### Product data:

**Product Type:** Expression Plasmids  
**Product Name:** CCDC34 (NM\_080654) Human Tagged ORF Clone  
**Tag:** Myc-DDK  
**Symbol:** CCDC34  
**Synonyms:** L15; NY-REN-41; RAMA3  
**Mammalian Cell Selection:** Neomycin  
**Vector:** pCMV6-Entry (PS100001)  
**E. coli Selection:** Kanamycin (25 ug/mL)  
**ORF Nucleotide Sequence:** >RC203345 representing NM\_080654  
Red=Cloning site Blue=ORF Green=Tags(s)

TTTTGTAATACGACTCACTATAGGGCGGCCGGAATTCGTCGACTGGATCCGGTACCGAGGAGATCTGCC  
GCC**CGATCGCC**

ATGTGGGCGGGGGCGCTGGGGCCTACTTTCCCTCTTCTACGCCGTTTCTCTGCTGACTGCAGAC  
CCAGGTCTCGGCCCTCTCGGACTCCTGCTCAGTCCCTATGACGGGCGCACGTGGGCAGGGGCTGGAGGT  
GGTGGCTCGCCGTCGCCGCCGCTGCCGCTGAGCTGCAGCAATCCACCAGGTCGCTGTTGTCTCCCTT  
GGCCACCAGAGCTTCCAGTTTGACGAGGACGACGGTGACGGGGAGGATGAGGAAGACGTGGATGATGAGG  
AAGACGTGGATGAAGATGCCCATGATTCAGAGGCCAAAGTGGCGAGCCTGAGAGGAATGGAGTTACAGGG  
GTGCGCCAGCACTCAGGTTGAATCAGAAAATAACCAAGAAGAACAGAAACAGGTGCGCTTACCAGAAAGC  
CGCCTGACACCATGGGAGGTGTGGTTTATTGGCAAAGAAAAAGAAACGTGACCGGCTGCAACTGAAAG  
CTCTAGAGGAATTAATCAACAAGTAAAAAGAAAAGAAATGGAAGAAGTAAAAAGAAAGATAAT  
TGCTGAAGAAAAGCACAAGGAATGGGTTTCAAGAAAAGAAATGAGCAAGTAAGGAGGGGAAAATGGATACAC  
ACATTGACATCTTTTGCAAAATTTTCTTCTATTATACTTCATTACCTAGGTTT

**ACGCGT**ACGCGGGCGCTCGAGCAGAACTCATCTCAGAAGAGGATCTGGCAGCAATGATATCTGGATT  
ACAAGGATGACGACGATAAGGTTTAA



[View online »](#)

**Protein Sequence:** >RC203345 representing NM\_080654  
 Red=Cloning site Green=Tags(s)

MWAAGRWGPTFPSSYAGFSADCRPRSPPSSDSCSVPMTGARGQGLEVVRSPPPLPLSCSNSTRLLSPL  
 GHQSFQFDEDDGDGEDEEDVDDEEDVDEDAHDSEAKVASLRGMELQGCSTQVESENQEEQKQVRLPES  
 RLLTPWEVWFIGEKEERDLQLKALEELNQLEKRKEMEEREKRKIIAEEKHKKEWVQKKNEQVRRGKWIH  
 TLTSLNQNISSYYTSLPRF

TRTRPLEQKLISEEDLAANDILDYKDDDDKV

**Chromatograms:** [https://cdn.origene.com/chromatograms/mg3516\\_b06.zip](https://cdn.origene.com/chromatograms/mg3516_b06.zip)

**Restriction Sites:** SgfI-MluI

**Cloning Scheme:**

Cloning sites used for ORF Shuttling:



\* The last codon before the Stop codon of the ORF

**ACCN:** NM\_080654

**ORF Size:** 687 bp

**OTI Disclaimer:** The molecular sequence of this clone aligns with the gene accession number as a point of reference only. However, individual transcript sequences of the same gene can differ through naturally occurring variations (e.g. polymorphisms), each with its own valid existence. This clone is substantially in agreement with the reference, but a complete review of all prevailing variants is recommended prior to use. [More info](#)

**OTI Annotation:** This clone was engineered to express the complete ORF with an expression tag. Expression varies depending on the nature of the gene.

**Components:** The ORF clone is ion-exchange column purified and shipped in a 2D barcoded Matrix tube containing 10ug of transfection-ready, dried plasmid DNA (reconstitute with 100 ul of water).

**Reconstitution Method:**

1. Centrifuge at 5,000xg for 5min.
2. Carefully open the tube and add 100ul of sterile water to dissolve the DNA.
3. Close the tube and incubate for 10 minutes at room temperature.
4. Briefly vortex the tube and then do a quick spin (less than 5000xg) to concentrate the liquid at the bottom.
5. Store the suspended plasmid at -20°C. The DNA is stable for at least one year from date of shipping when stored at -20°C.

**RefSeq:** [NM\\_080654.2](#), [NP\\_542385.1](#)

**RefSeq Size:** 2120 bp

**RefSeq ORF:** 690 bp

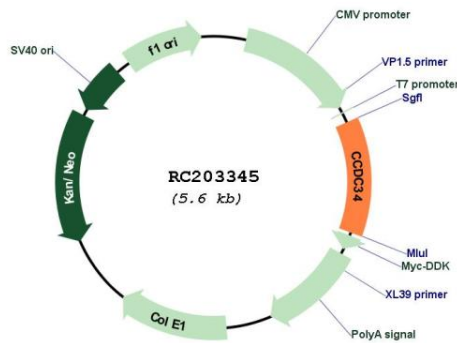
**Locus ID:** 91057

**UniProt ID:** [Q96HJ3](#)

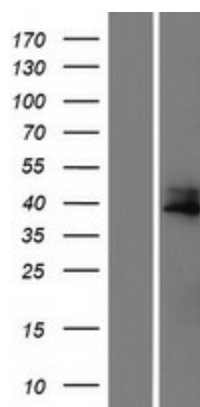
**Cytogenetics:** 11p14.1

**MW:** 26.1 kDa

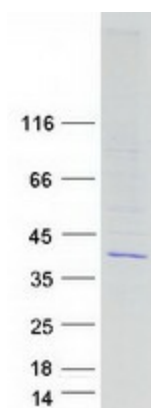
**Product images:**



Circular map for RC203345



Western blot validation of overexpression lysate (Cat# [LY409124]) using anti-DDK antibody (Cat# [TA50011-100]). Left: Cell lysates from untransfected HEK293T cells; Right: Cell lysates from HEK293T cells transfected with RC203345 using transfection reagent MegaTran 2.0 (Cat# [TT210002]).



Coomassie blue staining of purified CCDC34 protein (Cat# [TP303345]). The protein was produced from HEK293T cells transfected with CCDC34 cDNA clone (Cat# RC203345) using MegaTran 2.0 (Cat# [TT210002]).