

Product datasheet for RC203342

ZNF323 (ZSCAN31) (NM_030899) Human Tagged ORF Clone

Product data:

Product Type: Expression Plasmids
Product Name: ZNF323 (ZSCAN31) (NM_030899) Human Tagged ORF Clone
Tag: Myc-DDK
Symbol: ZNF323
Synonyms: ZNF20-Lp; ZNF310P; ZNF323
Mammalian Cell Selection: Neomycin
Vector: pCMV6-Entry (PS100001)
E. coli Selection: Kanamycin (25 ug/mL)
ORF Nucleotide Sequence: >RC203342 ORF sequence
 Red=Cloning site Blue=ORF Green=Tags(s)

TTTTGTAATACGACTCACTATAGGGCGCCGGGAATTCGTCGACTGGATCCGGTACCGAGGAGATCTGCC
 GCC**CGATCGCC**

ATGGAACATTTGGGGGATAGCAAACCTCAAAGAGATGTATCTTTGGATTCTAAGTACAGAGAACTTGTA
 AACGAGACAGCAAGGCAGAAAAGCAGCAGGCACATTCCACTGGAGAGAGACGCCACAGGTGCAATGAATG
 TGGGAAAAGCTTCACTAAGAGTTCACTACTCATTGAGCACCAGAGAATCCACACTGGGGAGAAGCCATAT
 GAATGTGAAGAATGTGGGAAGGCCTTCAGCCGGAGGTCAAGCCTGAATGAACATCGGCGGAGCCACTG
 GAGAGAAACCCTATCAATGTAAGGAGTGTGGGAAAGCCTTCAGTGCCAGCAATGGCCTCACTCGACACAG
 AAGAAATCCACACAGGGGAAAACCATATGAATGCAAAGTGTGTGGGAAGGCTTTCCTCCTCAGCTCATGC
 CTTGTTCAAGCATCAGAGGATACACACTGGAGAGAAGCGCTATCAGTGTCGTGAGTGTGGCAAAGCCTTCA
 TTCAGAATGCAGGGCTTTTCCAGCATCTCCGAGTCCACACTGGTGAGAAACCCTATCAGTGCAGTCAGTG
 CAGTAACTCTTTAGTAAGCGGACACTTCTTAAGAAACATCAGAAAATCCACACTGGAGAGAGACCA

ACGCGTACGCGGGCCGCTCGAGCAGAAACTCATCTCAGAAGAGGATCTGGCAGCAAATGATATCCTGGATT
 ACAAGGATGACGACGATAAGGTTTAA

Protein Sequence: >RC203342 protein sequence
 Red=Cloning site Green=Tags(s)

MEHLGDSKLRDVSLSKDYRETCKRDSKAEKQAHSTGERRHRCNECGKSFTKSSVLIHQRIHTGEKPY
 ECEECKGAFSRRSSLNEHRRSHTGEKPYQCKEKGKAFSASNGLTRHRIHTGEKPYECKVCGKAFLLSSC
 LVQHRIHTGEKRYQCRECGKAFIQNAGLRFQHLRVHTGEKPYQCSQCSKLF SKRLLKHKQKIHTGERP

TRTRPLEQKLISEEDLAANDILDYKDDDDKV

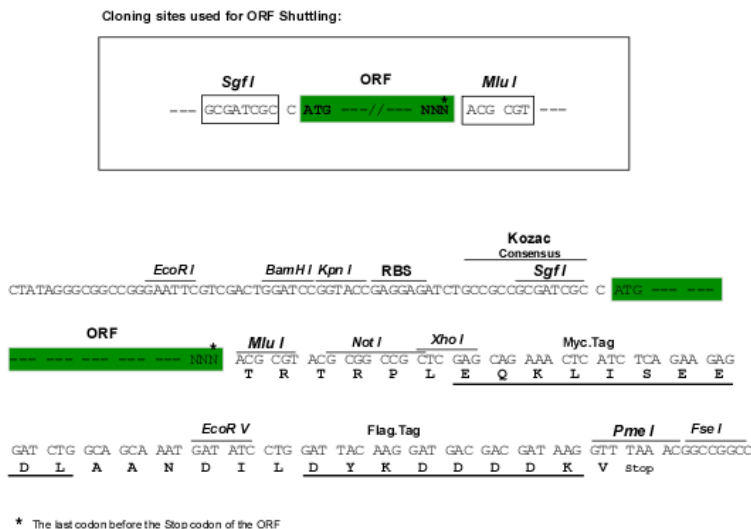


[View online »](#)

Chromatograms: https://cdn.origene.com/chromatograms/mk6416_h07.zip

Restriction Sites: SgfI-MluI

Cloning Scheme:



ACCN: NM_030899

ORF Size: 627 bp

OTI Disclaimer: The molecular sequence of this clone aligns with the gene accession number as a point of reference only. However, individual transcript sequences of the same gene can differ through naturally occurring variations (e.g. polymorphisms), each with its own valid existence. This clone is substantially in agreement with the reference, but a complete review of all prevailing variants is recommended prior to use. [More info](#)

OTI Annotation: This clone was engineered to express the complete ORF with an expression tag. Expression varies depending on the nature of the gene.

Components: The ORF clone is ion-exchange column purified and shipped in a 2D barcoded Matrix tube containing 10ug of transfection-ready, dried plasmid DNA (reconstitute with 100 ul of water).

Reconstitution Method:

1. Centrifuge at 5,000xg for 5min.
2. Carefully open the tube and add 100ul of sterile water to dissolve the DNA.
3. Close the tube and incubate for 10 minutes at room temperature.
4. Briefly vortex the tube and then do a quick spin (less than 5000xg) to concentrate the liquid at the bottom.
5. Store the suspended plasmid at -20°C. The DNA is stable for at least one year from date of shipping when stored at -20°C.

RefSeq: [NM_030899.3](#)

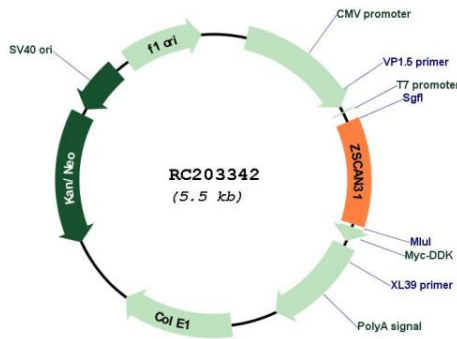
RefSeq Size: 3039 bp

RefSeq ORF: 1221 bp

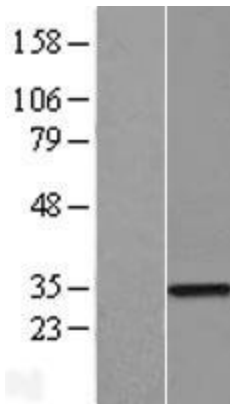
Locus ID: 64288

UniProt ID: [Q96LW9](#)
Cytogenetics: 6p22.3-p22.1
Domains: LER, zf-C2H2
Protein Families: Transcription Factors
MW: 24.2 kDa
Gene Summary: This gene encodes a protein containing multiple C2H2-type zinc finger motifs. Alternative splicing results in multiple transcript variants. [provided by RefSeq, Jan 2016]

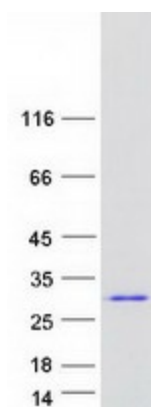
Product images:



Circular map for RC203342



Western blot validation of overexpression lysate (Cat# [LY410670]) using anti-DDK antibody (Cat# [TA50011-100]). Left: Cell lysates from untransfected HEK293T cells; Right: Cell lysates from HEK293T cells transfected with RC203342 using transfection reagent MegaTran 2.0 (Cat# [TT210002]).



Coomassie blue staining of purified ZSCAN31 protein (Cat# [TP303342]). The protein was produced from HEK293T cells transfected with ZSCAN31 cDNA clone (Cat# RC203342) using MegaTran 2.0 (Cat# [TT210002]).