

Product datasheet for **RC203336**

SLD5 (GINS4) (NM_032336) Human Tagged ORF Clone

Product data:

Product Type:	Expression Plasmids
Product Name:	SLD5 (GINS4) (NM_032336) Human Tagged ORF Clone
Tag:	Myc-DDK
Symbol:	SLD5
Synonyms:	SLD5
Mammalian Cell Selection:	Neomycin
Vector:	pCMV6-Entry (PS100001)
E. coli Selection:	Kanamycin (25 ug/mL)
ORF Nucleotide Sequence:	>RC203336 ORF sequence Red=Cloning site Blue=ORF Green=Tags(s)

TTTTGTAATACGACTCACTATAGGGCGCCGGGAATTCGTCGACTGGATCCGGTACCGAGGAGATCTGCC
GCC**CGATCGCC**

ATGACCGAAGAAGTGGATTTCTGGGACAGGACTCTGATGGGGTAGTGAGGAAGTGGTCTAACTCCTG
CAGAGCTCATTGAAAGATTGGAGCAGGCCTGGATGAATGAAAAGTTTGCCCTGAGCTGCTGGAGAGCAA
GCCTGAGATTGTAGAATGTGTCATGGAACAGCTGGAGCACATGGAAGAAAATCTCAGGAGAGCCAAAAGG
GAGGACCTGAAGGTCAGCATCCACAAAATGGAGATGGAGAGGATCCGCTACGTCCTCAGCAGCTACTTGC
GGTGTGCGCTCATGAAGATAGAGAAGTTTTCCCTCATGTCCTTGAGAAGGAAAAACACGTCCTGAGGG
GGAGCCTTCCAGCCTCTCGCCGGAAGAGTTGGCCTTTGCCAGAGAGTTTATGGCGAACACAGAGTCTAT
CTGAAAAATGTCGCTTGAAGCACATGCCCCCTAACTTACAGAAGGTGGACCTCTTTGCGGCAGTCCCCA
AACCAGATCTAGATTCTTACGTGTTTCTGAGAGTGAGAGAACGACAAGAAAACTACTGGTGAACCCAGA
CACAGATGAGCAGAGGGACTACGTGATTGACCTGGAGAAGGGCTCACAGCACTTGATCCGATACAAAACC
ATTGCACCTCTGGTTGCATCTGGAGCTGTCCAGCTAATT

ACGCGTACGCGGCGCTCGAGCAGAACTCATCTCAGAAGAGGATCTGGCAGCAAATGATATCCTGGATT
ACAAGGATGACGACGATAAGGTTTAA



[View online »](#)

Protein Sequence: >RC203336 protein sequence
 Red=Cloning site Green=Tags(s)

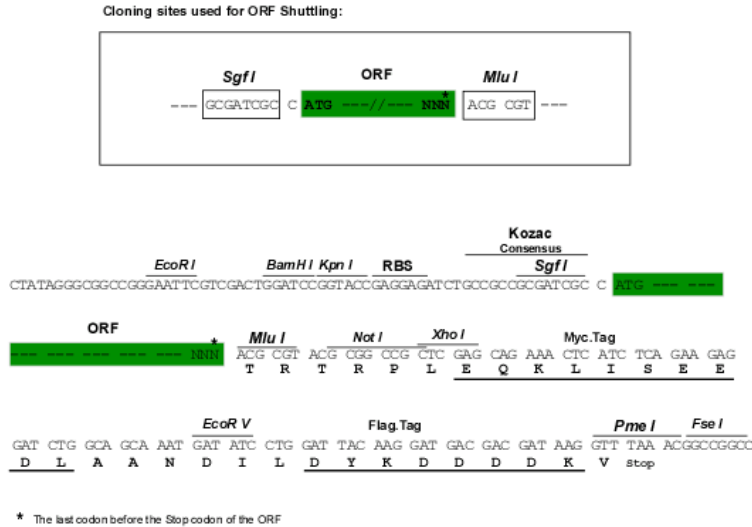
MTEEVDFLGQSDSGGSEEVVLTPAELIERLEQAWMNEKFAPELLESKPEIVECVMEQLEHMEENLRRAKR
 EDLKVSIHQMEMERIRYVLSYLRCRLMKIEKFFPHVLEKEKTRPEGEPSSLSPEELAFAREFMANTESY
 LKNVALKHMPPNLQKVDLFRVAVPKPDLDSYVFLRVRERQENILVEPDTDEQRDYVIDLEKGSQHLIRYKT
 IAPLVASGAVQLI

TRTRPLEQKLISEEDLAANDILDYKDDDDKV

Chromatograms: https://cdn.origene.com/chromatograms/mk6145_a05.zip

Restriction Sites: SgfI-MluI

Cloning Scheme:



ACCN: NM_032336

ORF Size: 669 bp

OTI Disclaimer: The molecular sequence of this clone aligns with the gene accession number as a point of reference only. However, individual transcript sequences of the same gene can differ through naturally occurring variations (e.g. polymorphisms), each with its own valid existence. This clone is substantially in agreement with the reference, but a complete review of all prevailing variants is recommended prior to use. [More info](#)

OTI Annotation: This clone was engineered to express the complete ORF with an expression tag. Expression varies depending on the nature of the gene.

Components: The ORF clone is ion-exchange column purified and shipped in a 2D barcoded Matrix tube containing 10ug of transfection-ready, dried plasmid DNA (reconstitute with 100 ul of water).

Reconstitution Method:

1. Centrifuge at 5,000xg for 5min.
2. Carefully open the tube and add 100ul of sterile water to dissolve the DNA.
3. Close the tube and incubate for 10 minutes at room temperature.
4. Briefly vortex the tube and then do a quick spin (less than 5000xg) to concentrate the liquid at the bottom.
5. Store the suspended plasmid at -20°C. The DNA is stable for at least one year from date of shipping when stored at -20°C.

RefSeq: [NM_032336.3](#)

RefSeq Size: 3841 bp

RefSeq ORF: 672 bp

Locus ID: 84296

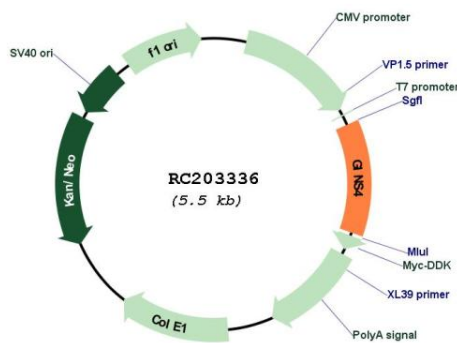
UniProt ID: [Q9BRT9](#)

Cytogenetics: 8p11.21

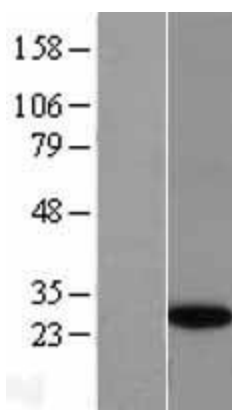
MW: 26 kDa

Gene Summary: The yeast heterotetrameric GINS complex is made up of Sld5, Psf1 (GINS1; MIM 610608), Psf2 (GINS2; MIM 610609), and Psf3 (GINS3; MIM 610610). The formation of the GINS complex is essential for the initiation of DNA replication in yeast and *Xenopus* egg extracts (Ueno et al., 2005 [PubMed 16287864]). See GINS1 for additional information about the GINS complex. [supplied by OMIM, Mar 2008]

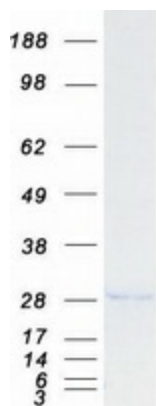
Product images:



Circular map for RC203336



Western blot validation of overexpression lysate (Cat# [LY403156]) using anti-DDK antibody (Cat# [TA50011-100]). Left: Cell lysates from untransfected HEK293T cells; Right: Cell lysates from HEK293T cells transfected with RC203336 using transfection reagent MegaTran 2.0 (Cat# [TT210002]).



Coomassie blue staining of purified GINS4 protein (Cat# [TP303336]). The protein was produced from HEK293T cells transfected with GINS4 cDNA clone (Cat# RC203336) using MegaTran 2.0 (Cat# [TT210002]).