

Product datasheet for RC203333

SOSTDC1 (NM_015464) Human Tagged ORF Clone

Product data:

Product Type: Expression Plasmids
Product Name: SOSTDC1 (NM_015464) Human Tagged ORF Clone
Tag: Myc-DDK
Symbol: SOSTDC1
Synonyms: CDA019; DAND7; ECTODIN; USAG1
Mammalian Cell Selection: Neomycin
Vector: pCMV6-Entry (PS100001)
E. coli Selection: Kanamycin (25 ug/mL)
ORF Nucleotide Sequence: >RC203333 ORF sequence
 Red=Cloning site Blue=ORF Green=Tags(s)

TTTTGTAATACGACTCACTATAGGGCGCCGGGAATTCGTCGACTGGATCCGGTACCGAGGAGATCTGCC
 GCC**CGATCGCC**

ATGCTTCCTCCTGCCATTCATTTCTATCTCCTTCCCCTTGCATGCATCCTAATGAAAAGCTGTTGGCTT
 TAAAAATGATGCCACAGAAATCCTTTATTCACATGTGGTTAAACCTGTTCCAGCACACCCAGCAGCAA
 CAGCACGTTGAATCAAGCCAGAAATGGAGGCAGGCATTTAGTAACACTGGACTGGATCGGAACACTCGG
 GTTCAAGTGGGTGCCGGGAAGTGCCTCCACCAATACATCTCTGATGGCCAGTGCACCAGCATCAGCC
 CTCTGAAGGAGCTGGTGTGTGCTGGCGAGTGCTTGCCCTGCCAGTGCTCCCTAACTGGATTGGAGGAGG
 CTATGGAACAAAGTACTGGAGCAGGAGGAGCTCCAGGAGTGGCGGTGTGTCAATGACAAAACCCGTACC
 CAGAGAATCCAGCTGCAGTGCCAAGATGGCAGCACACGCACCTACAAAATCACAGTAGTCACTGCCTGCA
 AGTGCAAGAGGTACACCCGGCAGCACAACGAGTCCAGTCACACTTTGAGAGCATGTACCTGCCAAGCC
 AGTCCAGCATCACAGAGAGCGGAAAAGAGCCAGCAAAATCCAGCAAGCACAGCATGAGT

ACGCGTACGCGGCCGCTCGAGCAGAAACTCATCTCAGAAGAGGATCTGGCAGCAAAATGATATCCTGGATT
 ACAAGGATGACGACGATAAGGTTTAA

Protein Sequence: >RC203333 protein sequence
 Red=Cloning site Green=Tags(s)

MLPPAIHFYLLPLACILMKSLAFKNDATEILYSHVVKPVAHPSSNSTLNQARNGGRHFSNTGLDRNTR
 VQVGCRELIRSTKYISDGQCTSIPLKELVCAGECLPLVLPNWIGGGYGTKYWSRRSSQEWRCVNDKTRT
 QRIQLQCQDGSSTRTYKITVVTACKCKRYTRQHNESSHNFE SMSPAKPVQHHRERKRASKSSKHSMS

TRTRPLEQKLISEEDLAANDILDYKDDDDKV



[View online »](#)

Chromatograms: https://cdn.origene.com/chromatograms/mk6050_g11.zip

Restriction Sites: SgfI-MluI

Cloning Scheme:



ACCN: NM_015464

ORF Size: 618 bp

OTI Disclaimer: The molecular sequence of this clone aligns with the gene accession number as a point of reference only. However, individual transcript sequences of the same gene can differ through naturally occurring variations (e.g. polymorphisms), each with its own valid existence. This clone is substantially in agreement with the reference, but a complete review of all prevailing variants is recommended prior to use. [More info](#)

OTI Annotation: This clone was engineered to express the complete ORF with an expression tag. Expression varies depending on the nature of the gene.

Components: The ORF clone is ion-exchange column purified and shipped in a 2D barcoded Matrix tube containing 10ug of transfection-ready, dried plasmid DNA (reconstitute with 100 ul of water).

Reconstitution Method:

1. Centrifuge at 5,000xg for 5min.
2. Carefully open the tube and add 100ul of sterile water to dissolve the DNA.
3. Close the tube and incubate for 10 minutes at room temperature.
4. Briefly vortex the tube and then do a quick spin (less than 5000xg) to concentrate the liquid at the bottom.
5. Store the suspended plasmid at -20°C. The DNA is stable for at least one year from date of shipping when stored at -20°C.

RefSeq: [NM_015464.3](#)

RefSeq Size: 1883 bp

RefSeq ORF: 621 bp

Locus ID: 25928

UniProt ID: [Q6X4U4](#)

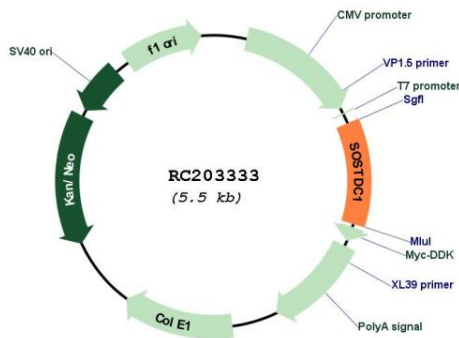
Cytogenetics: 7p21.2

Protein Families: Secreted Protein

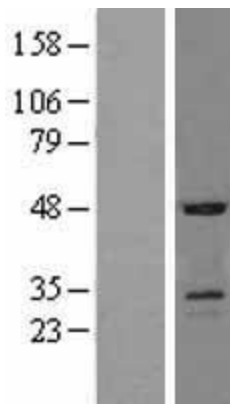
MW: 23.3 kDa

Gene Summary: This gene is a member of the sclerostin family and encodes an N-glycosylated, secreted protein with a C-terminal cystine knot-like domain. This protein functions as a bone morphogenetic protein (BMP) antagonist. Specifically, it directly associates with BMPs, prohibiting them from binding their receptors, thereby regulating BMP signaling during cellular proliferation, differentiation, and programmed cell death. [provided by RefSeq, Jul 2008]

Product images:



Circular map for RC203333



Western blot validation of overexpression lysate (Cat# [LY402441]) using anti-DDK antibody (Cat# [TA50011-100]). Left: Cell lysates from untransfected HEK293T cells; Right: Cell lysates from HEK293T cells transfected with RC203333 using transfection reagent MegaTran 2.0 (Cat# [TT210002]).