

Product datasheet for **RC203331**

BAP29 (BCAP29) (NM_018844) Human Tagged ORF Clone

Product data:

Product Type:	Expression Plasmids
Product Name:	BAP29 (BCAP29) (NM_018844) Human Tagged ORF Clone
Tag:	Myc-DDK
Symbol:	BAP29
Synonyms:	BAP29
Mammalian Cell Selection:	Neomycin
Vector:	pCMV6-Entry (PS100001)
E. coli Selection:	Kanamycin (25 ug/mL)
ORF Nucleotide Sequence:	>RC203331 ORF sequence Red=Cloning site Blue=ORF Green=Tags(s)

TTTGTGTAATACGACTCACTATAGGGCGGCCGGAATTCGTCGACTGGATCCGGTACCGAGGAGATCTGCC
 GCC**CGATCGC**

ATGACACTCCAATGGGCTGCAGTGGCAACCTTTCTTTATGCCGAAATAGGACTCATTTTAATCTTCTGCC
 TACCTTTTATTCCTCCTCAGAGATGGCAGAAGATTTTTCATTTAATGTCTGGGTAAAATTGCAACTTT
 TTGGAACAAGGCTTTCCTTACCATTATCATCCTATTGATTGTTCTATTTCTAGATGCTGTGAGAGAAGTA
 AGGAAATATTCTCAGTTCATACCATTGAGAAGAGCTCCACCAGCAGACCTGATGCCTATGAACACACAC
 AGATGAACTTTTTAGGTCTCAAAGAAATCTTACATTTCTGGATTTTCCCTATTTTTTTGGCTAGTTTT
 GAGACGTCTGGTTACGCTTATTACTCAACTGGCAAAAGAACTGTCAAACAAAGGTGACTTAACTCAAA
 GCAGAAATACTAACAAGGCTGCCAAAAATTTATGGAAGAAAACGAAAACTAAAAAGGATTTTAAAA
 GCCATGGTAAAGATGAAGAATGTGTTTTGGAAGCAGAAAAATAAAAACTAGTAGAAGACCAGGAGAACT
 GAAAACTGAATTAAGGAAGACTTCAGATGCCCTTTCTAAGGCACAAAATGATGTGATGGAATGAAGATG
 CAGTCAGAGAGACTTTCGAAAGAATATGATCAACTCCTGAAAGAACACTCTGAATTCAGGATCGTTTAG
 AAAGAGGCAACAAGAAAAGACTG

ACGCGTACGCGGCCGCTCGAGCAGAACTCATCTCAGAAGAGGATCTGGCAGCAAATGATATCCTGGATT
 ACAAGGATGACGACGATAAGGTTTAA


[View online »](#)

Protein Sequence: >RC203331 protein sequence
 Red=Cloning site Green=Tags(s)

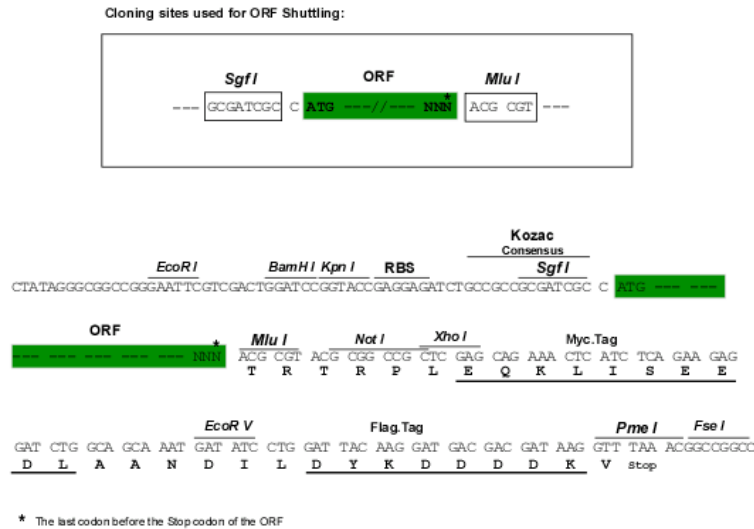
MTLQWAAVATFLYAEIGLILIFCLPFIPPQRWQKIFSFNVWGKIATFWNKAFLTIILLIVLFLDAVREV
 RKYSSVHTIEKSSTSRPDAYEHTQMKLFRSQRNLYISGFSLFFWLVLRLVTLITQLAKELSNKGLKTQ
 AENTNKAARKFMEENEKLKRLKSHGKDEECVLEAENKKLVEDQEKLKTELRTSDALSQAQNDVMMEMKM
 QSERLSKEYDQLLKEHSELQDRLERGNKKRL

TRTRPLEQKLISEEDLAANDILDYKDDDDKV

Chromatograms: https://cdn.origene.com/chromatograms/mk6577_b07.zip

Restriction Sites: SgfI-MluI

Cloning Scheme:



ACCN: NM_018844

ORF Size: 723 bp

OTI Disclaimer: The molecular sequence of this clone aligns with the gene accession number as a point of reference only. However, individual transcript sequences of the same gene can differ through naturally occurring variations (e.g. polymorphisms), each with its own valid existence. This clone is substantially in agreement with the reference, but a complete review of all prevailing variants is recommended prior to use. [More info](#)

OTI Annotation: This clone was engineered to express the complete ORF with an expression tag. Expression varies depending on the nature of the gene.

Components: The ORF clone is ion-exchange column purified and shipped in a 2D barcoded Matrix tube containing 10ug of transfection-ready, dried plasmid DNA (reconstitute with 100 ul of water).

Reconstitution Method:

1. Centrifuge at 5,000xg for 5min.
2. Carefully open the tube and add 100ul of sterile water to dissolve the DNA.
3. Close the tube and incubate for 10 minutes at room temperature.
4. Briefly vortex the tube and then do a quick spin (less than 5000xg) to concentrate the liquid at the bottom.
5. Store the suspended plasmid at -20°C. The DNA is stable for at least one year from date of shipping when stored at -20°C.

Note: Plasmids are not sterile. For experiments where strict sterility is required, filtration with 0.22um filter is required.

RefSeq: [NM_018844.4](#)

RefSeq Size: 6034 bp

RefSeq ORF: 726 bp

Locus ID: 55973

UniProt ID: [Q9UHQ4](#)

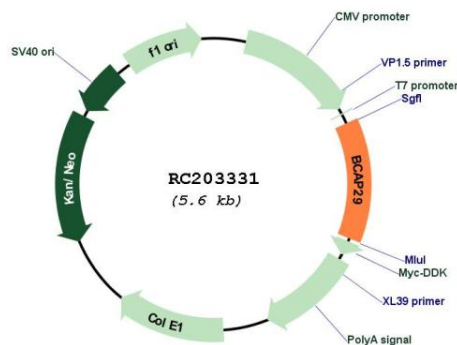
Cytogenetics: 7q22.3

Protein Families: Druggable Genome, Transmembrane

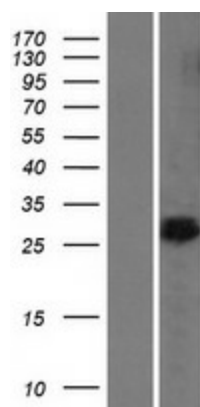
MW: 28.3 kDa

Gene Summary: May play a role in anterograde transport of membrane proteins from the endoplasmic reticulum to the Golgi. May be involved in CASP8-mediated apoptosis (By similarity). [UniProtKB/Swiss-Prot Function]

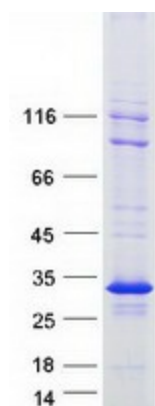
Product images:



Circular map for RC203331



Western blot validation of overexpression lysate (Cat# [LY412884]) using anti-DDK antibody (Cat# [TA50011-100]). Left: Cell lysates from untransfected HEK293T cells; Right: Cell lysates from HEK293T cells transfected with RC203331 using transfection reagent MegaTran 2.0 (Cat# [TT210002]).



Coomassie blue staining of purified BCAP29 protein (Cat# [TP303331]). The protein was produced from HEK293T cells transfected with BCAP29 cDNA clone (Cat# RC203331) using MegaTran 2.0 (Cat# [TT210002]).