

## Product datasheet for RC203327

### KIAA1143 (NM\_020696) Human Tagged ORF Clone

#### Product data:

Product Type: Expression Plasmids  
Product Name: KIAA1143 (NM\_020696) Human Tagged ORF Clone  
Tag: Myc-DDK  
Symbol: KIAA1143  
Mammalian Cell Selection: Neomycin  
Vector: pCMV6-Entry (PS100001)  
E. coli Selection: Kanamycin (25 ug/mL)  
ORF Nucleotide Sequence: >RC203327 ORF sequence  
Red=Cloning site Blue=ORF Green=Tags(s)

TTTTGTAATACGACTCACTATAGGGCGGCCGGGAATTCGTCGACTGGATCCGGTACCGAGGAGATCTGCC  
GCC**CGATCGCC**

ATGAGCAAGCGGAACCAGGTATCGTACGTGCGGCCAGCCGAGCCGGCGTTTCTGGCCCGCTCAAGGAAC  
GGGTCGGCTACAGGGAGGGACCCACCGTAGAGACTAAGAGAATTCAGCCTCAGCCCCAGATGAAGATGG  
GGATCACAGTGACAAAGAAGATGAACAGCCTCAAGTGGTGGTTTTAAAAAGGGAGACCTGTCAGTTGAA  
GAAGTCATGAAAATTAAGCAGAAATAAAGGCTGCCAAGCAGATGAAGAACCACTCCAGCCGATGGAA  
GAATCATATATCGAAAACAGTCAAGCATCCCTCAGATGAAAAATTCAGGTTAACAGCAAGCTCAAA  
AAAGAAGAAGCCAAATGAAGATGAAGTAAATCAGGACTCGGTCAAAAAGAACTCACAAAAACAAATTA  
AATAGTAGCCTCCTTTCTTTTGACAACGAAGATGAAAATGAG

**ACGCGT**ACGCGGCCGCTCGAGCAGAACTCATCTCAGAAGAGGATCTGGCAGCAATGATATCCTGGATT  
ACAAGGATGACGACGATAAGGTTTAA

Protein Sequence: >RC203327 protein sequence  
Red=Cloning site Green=Tags(s)

MSKRNQVSYVRPAEPAFLARFKERVGYREGPTVETKRIQPQPPDEDGDHSDKEDEQPQVVVLKKGDL SVE  
EVMKIKAEIKAAKADEEPTADGRRIYRKPVKHPSDEKYSGLTASSKKKKPNEDEVNQDSVKKNSQKQIK  
NSSLLSFDNEDENE

**TR**TRPLEQKLISEEDLAANDILDYKDDDDKV

Chromatograms: [https://cdn.origene.com/chromatograms/mk6577\\_d08.zip](https://cdn.origene.com/chromatograms/mk6577_d08.zip)

Restriction Sites: SgfI-MluI



[View online »](#)

**Cloning Scheme:**


**ACCN:** NM\_020696

**ORF Size:** 462 bp

**OTI Disclaimer:** The molecular sequence of this clone aligns with the gene accession number as a point of reference only. However, individual transcript sequences of the same gene can differ through naturally occurring variations (e.g. polymorphisms), each with its own valid existence. This clone is substantially in agreement with the reference, but a complete review of all prevailing variants is recommended prior to use. [More info](#)

**OTI Annotation:** This clone was engineered to express the complete ORF with an expression tag. Expression varies depending on the nature of the gene.

**Components:** The ORF clone is ion-exchange column purified and shipped in a 2D barcoded Matrix tube containing 10ug of transfection-ready, dried plasmid DNA (reconstitute with 100 ul of water).

- Reconstitution Method:**
1. Centrifuge at 5,000xg for 5min.
  2. Carefully open the tube and add 100ul of sterile water to dissolve the DNA.
  3. Close the tube and incubate for 10 minutes at room temperature.
  4. Briefly vortex the tube and then do a quick spin (less than 5000xg) to concentrate the liquid at the bottom.
  5. Store the suspended plasmid at -20°C. The DNA is stable for at least one year from date of shipping when stored at -20°C.

**RefSeq:** [NM\\_020696.4](#)

**RefSeq Size:** 5157 bp

**RefSeq ORF:** 465 bp

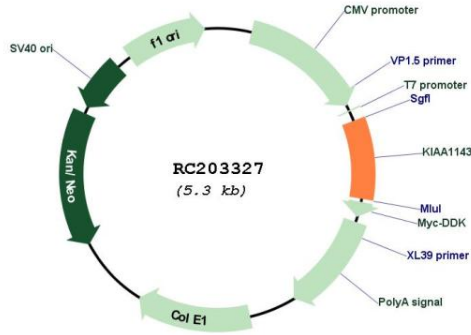
**Locus ID:** 57456

**UniProt ID:** [Q96AT1](#)

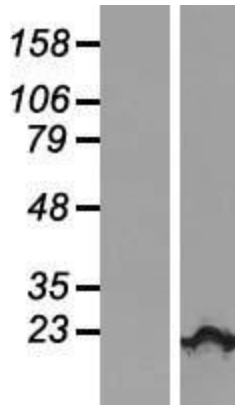
Cytogenetics: 3p21.31

MW: 17.5 kDa

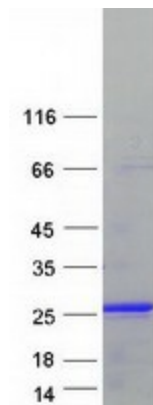
**Product images:**



Circular map for RC203327



Western blot validation of overexpression lysate (Cat# [LY412389]) using anti-DDK antibody (Cat# [TA50011-100]). Left: Cell lysates from untransfected HEK293T cells; Right: Cell lysates from HEK293T cells transfected with RC203327 using transfection reagent MegaTran 2.0 (Cat# [TT210002]).



Coomassie blue staining of purified KIAA1143 protein (Cat# [TP303327]). The protein was produced from HEK293T cells transfected with KIAA1143 cDNA clone (Cat# RC203327) using MegaTran 2.0 (Cat# [TT210002]).