

Product datasheet for **RC203322**

Semenogelin I (SEMG1) (NM_198139) Human Tagged ORF Clone

Product data:

Product Type:	Expression Plasmids
Product Name:	Semenogelin I (SEMG1) (NM_198139) Human Tagged ORF Clone
Tag:	Myc-DDK
Symbol:	Semenogelin I
Synonyms:	CT103; MGC14719; RATSVP1IA; semenogelin I; SEMG; seminal vesicle protein, secretion 2; seminal vesicle secretory protein 2; SGI; SVPIIA; Svs2; Svs2p2
Mammalian Cell Selection:	Neomycin
Vector:	pCMV6-Entry (PS100001)
E. coli Selection:	Kanamycin (25 ug/mL)



[View online »](#)

ORF Nucleotide Sequence:

>RC203322 ORF sequence
 Red=Cloning site Blue=ORF Green=Tags(s)

TTTTGTAATACGACTCACTATAGGGCGGCCGGAATTCGTCGACTGGATCCGGTACCGAGGAGATCTGCC
 GCC**CGGATCGCC**

ATGAAGCCCAACATCATCTTTGTACTTTCCCTGCTCCTCATCTTGGAGAAGCAAGCAGCTGTGATGGGAC
 AAAAAGGTGGATCAAAGGCCGATTACCAAGTGAATTTCCCAATTTCCACACGGACAAAAGGGCCAGCA
 CTATTCTGGACAAAAAGCAAGCAAACTGAATCCAAAGCAGTTTTTCTATTCAATACACATATCAT
 GTAGATGCCAATGATCATGACCAGTCCCAGAAAAGTCAGCAATATGATTTGAATGCCCTACATAAGACGA
 CAAAATCACACGACATCTAGGTGGAAGTCAACAAGTCTCCATAATAACAAGAAGGCAGAGACCATGA
 TAAATCAAAGGTCATTTTACAGGGTAGTTATACACCATAAAGGAGGCAAAGCTCATCGTGGGACACAA
 AATCCTTCTCAAGATCAGGGGAATAGCCCATCTGGAAAGGGAATATCCAGTCAATATTCAAACACAGAAG
 AAAGGCTGTGGTTCATGGACTAAGTAAGAACAACCTCCGCTCTGGTGCACAAAAAGGTAGAAAACA
 AGCGGGATCCCAAAGCAGTTATGTTCTCAAAGTGAAGAGCTAGTAGCTAACAAACAACAACGTGAGACT
 AAAAATCTCATCAAATAAAGGCCATTACCAAATGTGGTTGAAGTGAGAGAGGAACATTCAAGTAAAG
 TACAAACCTCACTCTGTCTGCGCACCAGCAAACTCCAACATGGATCCAAAGACATTTTTTCTACCCA
 AGATGAGCTCCTAGTATATAACAAGATCAACACCAGACAAAAATCTCAATCAAGATCAACAGCATGGC
 CGAAAGGCAAAATAAATATCATACCAATCTTCAAGTACGGAAGAAAGACGACTCCACTATGGAGAAAATG
 GTGTGCAGAAAGATGTATCCCAACGCAGTATTTATAGCCAAACTGAAAAGCTAGTAGCAGGCAAGTCTCA
 AATCCAGGCACCAATCCTAAGCAAGAGCCATGGCATGGTAAAACGCAAAAGGAGAGTCTGGCCAATCT
 ACAATAGAGAACAAGACCTACTCAGTCATGAACAAAAAGGCAGACACCAACATGGATCTCATGGGGAT
 TGGATATTGTAATTATAGAGCAGGAAGTACAGTGTGATCGTCATTTGGCACAAACATCTTAAACAACGACCA
 AAACCCATTATTACA

ACGCGTACGCGGCCGCTCGAGCAGAACTCATCTCAGAAGAGGATCTGGCAGCAATGATATCCTGGATT
 ACAAGGATGACGACGATAAGGTTAA

Protein Sequence:

>RC203322 protein sequence
 Red=Cloning site Green=Tags(s)

MKPNIIFVLSLLLILEKQAAVMGQKGGSKGRLPSEFSQFPHGQKQHYSGQKQKQTESKGSFSIQYTYH
 VDANDHDQSRKSQQYDLNALHKTTKSQRHLGGSQQLLHNKQEGRDHDKSKGHFHRVVIHHKGGKAHRTQ
 NPSQDQGNPSGKGISSQYSNTEERLWVHGLSKEQTSVSGAQKGRKQGGSSSYVLQTEELVANKQQRET
 KNSHQKNGHYQNVVEVREEHSSKVQTSLCPAHQDKLQHGSKDIFSTQDELLVYNKNQHQTKNLNQDQHG
 RKANKISYQSSSTEERLHYGENGVQKDVSRSIYSQTEKLVAGKSQIQAPNPKQEPWHGENAKGESGQS
 TNREQDLLSHEQKGRHQHGSHGGLDIVIIEQEDDSDRHLAQHLNNDQNPLFT

TRTRPLEQKLISEEDLAANDILDYKDDDDKV

Chromatograms:

https://cdn.origene.com/chromatograms/mk6050_e09.zip

Restriction Sites:

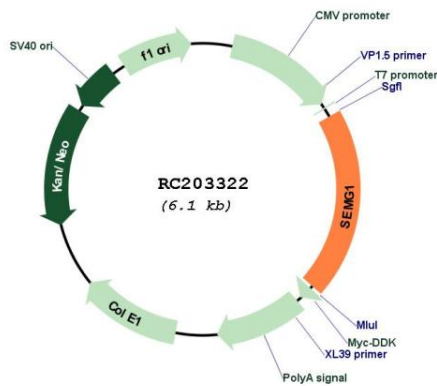
Sgfl-Mlul

Protein Families: Secreted Protein

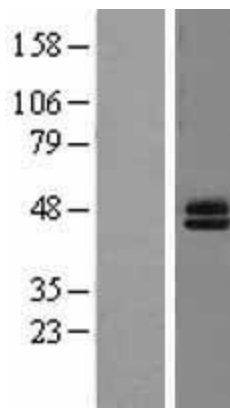
MW: 45.3 kDa

Gene Summary: The protein encoded by this gene is the predominant protein in semen. The encoded secreted protein is involved in the formation of a gel matrix that encases ejaculated spermatozoa. This preproprotein is proteolytically processed by the prostate-specific antigen (PSA) protease to generate multiple peptide products that exhibit distinct functions. One of these peptides, Sgl-29, is an antimicrobial peptide with antibacterial activity. This proteolysis process also breaks down the gel matrix and allows the spermatozoa to move more freely. This gene and another similar semenogelin gene are present in a gene cluster on chromosome 20. [provided by RefSeq, Feb 2016]

Product images:



Circular map for RC203322



Western blot validation of overexpression lysate (Cat# [LY403672]) using anti-DDK antibody (Cat# [TA50011-100]). Left: Cell lysates from untransfected HEK293T cells; Right: Cell lysates from HEK293T cells transfected with RC203322 using transfection reagent MegaTran 2.0 (Cat# [TT210002]).