

Product datasheet for **RC203321L3V**

Fc epsilon RI (FCER1A) (NM_002001) Human Tagged ORF Clone Lentiviral Particle

Product data:

Product Type:	Lentiviral Particles
Product Name:	Fc epsilon RI (FCER1A) (NM_002001) Human Tagged ORF Clone Lentiviral Particle
Symbol:	Fc epsilon RI
Synonyms:	FCE1A; FcERI
Mammalian Cell Selection:	Puromycin
Vector:	pLenti-C-Myc-DDK-P2A-Puro (PS100092)
Tag:	Myc-DDK
ACCN:	NM_002001
ORF Size:	771 bp
ORF Nucleotide Sequence:	The ORF insert of this clone is exactly the same as(RC203321).
OTI Disclaimer:	The molecular sequence of this clone aligns with the gene accession number as a point of reference only. However, individual transcript sequences of the same gene can differ through naturally occurring variations (e.g. polymorphisms), each with its own valid existence. This clone is substantially in agreement with the reference, but a complete review of all prevailing variants is recommended prior to use. More info
OTI Annotation:	This clone was engineered to express the complete ORF with an expression tag. Expression varies depending on the nature of the gene.
RefSeq:	NM_002001.2
RefSeq Size:	1198 bp
RefSeq ORF:	774 bp
Locus ID:	2205
UniProt ID:	P12319
Cytogenetics:	1q23.2
Protein Families:	Transmembrane
Protein Pathways:	Asthma, Fc epsilon RI signaling pathway

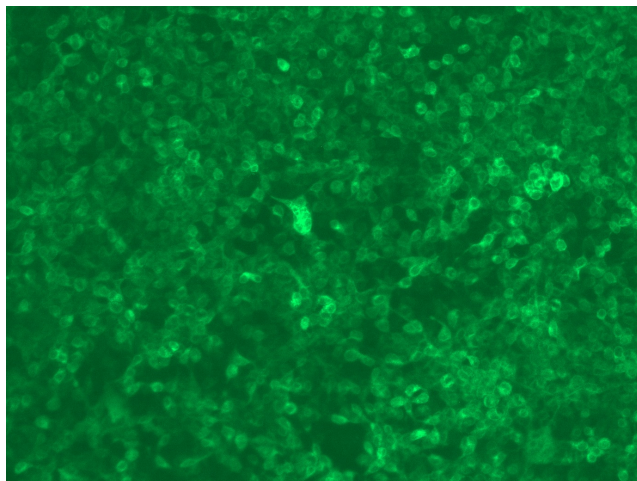


[View online »](#)

MW: 29.6 kDa

Gene Summary: The immunoglobulin epsilon receptor (IgE receptor) is the initiator of the allergic response. When two or more high-affinity IgE receptors are brought together by allergen-bound IgE molecules, mediators such as histamine that are responsible for allergy symptoms are released. This receptor is comprised of an alpha subunit, a beta subunit, and two gamma subunits. The protein encoded by this gene represents the alpha subunit. [provided by RefSeq, Aug 2011]

Product images:



[RC203321L3] was used to prepare Lentiviral particles using [TR30037] packaging kit. HEK293T cells were transduced with RC203321L3V particle to overexpress human FCER1A-Myc-DDK fusion protein.