

Product datasheet for **RC203321**

Fc epsilon RI (FCER1A) (NM_002001) Human Tagged ORF Clone

Product data:

Product Type:	Expression Plasmids
Product Name:	Fc epsilon RI (FCER1A) (NM_002001) Human Tagged ORF Clone
Tag:	Myc-DDK
Symbol:	Fc epsilon RI
Synonyms:	FCE1A; FcERI
Mammalian Cell Selection:	Neomycin
Vector:	pCMV6-Entry (PS100001)
E. coli Selection:	Kanamycin (25 ug/mL)
ORF Nucleotide Sequence:	>RC203321 ORF sequence Red=Cloning site Blue=ORF Green=Tags(s)

TTTTGTAATACGACTCACTATAGGGCGGCCGGAATTCGTCGACTGGATCCGGTACCGAGGAGATCTGCC
GCC**CGATCGCC**

ATGGCTCCTGCCATGGAATCCCCTACTCTACTGTGTGTAGCCTTACTGTTCTTCGCTCCAGATGGCGTGT
TAGCAGTCCCTCAGAAACCTAAGGTCTCCTTGAACCTCCATGGAATAGAATATTTAAAGGAGAGAATGT
GACTCTTACATGTAATGGGAACAATTTCTTTGAAGTCAGTTCACCAAATGGTCCACAATGGCAGCCTT
TCAGAAGAGACAAATCAAGTTTGAATATTGTGAATGCCAAATTTGAAGACAGTGGAGAATACAAATGTC
AGCACCAACAAGTTAATGAGAGTGAACCTGTGTACCTGGAAGTCTTCAGTACTGGCTGCTCCTTCAGGC
CTCTGCTGAGGTGGTGTGGAGGCCAGCCCTTCTCAGGTGCCATGGTTGGAGGAAGTGGGATGTG
TACAAGGTGATCTATTATAAGGATGGTGAAGCTCTCAAGTACTGGTATGAGAACCACAACATCTCCATTA
CAAATGCCACAGTTGAAGACAGTGAACCTACTACTGTACGGGCAAAGTGTGGCAGCTGGACTATGAGTC
TGAGCCCTCAACACTACTGTAATAAAAGCTCCGCGTGAGAAGTACTGGCTACAATTTTTATCCCATTG
TTGGTGGTGAATCTGTTTGTGTGGACACAGGATTATTTATCTCAACTCAGCAGCAGGCCACATTTCTCT
TGAAGATTAAGAGAACCAGGAAAGGCTTCAGACTTCTGAACCCACATCCTAAGCCAAACCCCAAAACAA
C

ACGCGTACGCGGCCGCTCGAGCAGAAACTCATCTCAGAAGAGGATCTGGCAGCAAATGATATCCTGGATT
ACAAGGATGACGACGATAAGGTTTAA



[View online »](#)

Protein Sequence: >RC203321 protein sequence
Red=Cloning site Green=Tags(s)

MAPAMESPTLLCVALLFFAPDGLVAVPQKPKVSLNPPWNRIFKGENVTLTCNGNNFFEVSSTKWFHNGSL
 SEETNSSLNIVNAKFEDSGEYKCOHQVNESEPVYLEVFSDWLLLQASAEVVMEGQPLFLRCHGWRNWDV
 YKVIYYKDGEALKYWYENHNISITNATVEDSGTYCTGKVVQLDYESEPLNITVIKAPREKYWLQFFIPL
 LVVILFAVDTGLFISTQQATFLLKIKRTRKGFRLNPHPKPNPKNN

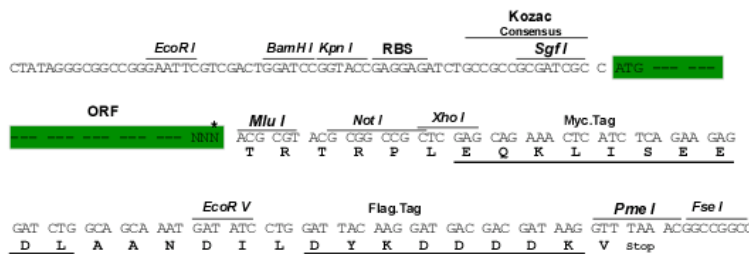
TRTRPLEQKLISEEDLAANDILDYKDDDDKV

Chromatograms: https://cdn.origene.com/chromatograms/mk6056_e10.zip

Restriction Sites: SgfI-MluI

Cloning Scheme:

Cloning sites used for ORF Shuttling:



* The last codon before the Stop codon of the ORF

ACCN: NM_002001

ORF Size: 771 bp

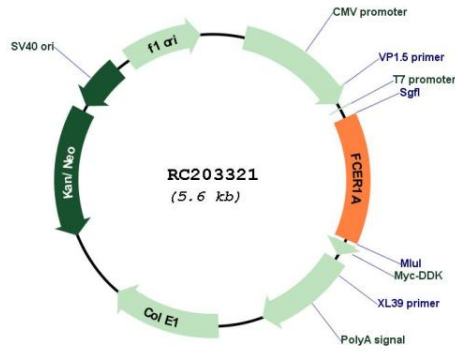
OTI Disclaimer: The molecular sequence of this clone aligns with the gene accession number as a point of reference only. However, individual transcript sequences of the same gene can differ through naturally occurring variations (e.g. polymorphisms), each with its own valid existence. This clone is substantially in agreement with the reference, but a complete review of all prevailing variants is recommended prior to use. [More info](#)

OTI Annotation: This clone was engineered to express the complete ORF with an expression tag. Expression varies depending on the nature of the gene.

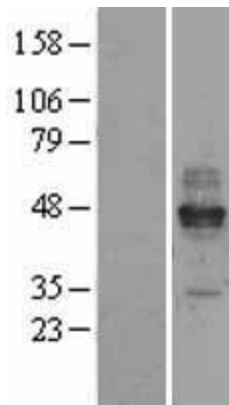
Components: The ORF clone is ion-exchange column purified and shipped in a 2D barcoded Matrix tube containing 10ug of transfection-ready, dried plasmid DNA (reconstitute with 100 ul of water).

Reconstitution Method:	<ol style="list-style-type: none">1. Centrifuge at 5,000xg for 5min.2. Carefully open the tube and add 100ul of sterile water to dissolve the DNA.3. Close the tube and incubate for 10 minutes at room temperature.4. Briefly vortex the tube and then do a quick spin (less than 5000xg) to concentrate the liquid at the bottom.5. Store the suspended plasmid at -20°C. The DNA is stable for at least one year from date of shipping when stored at -20°C.
Note:	Plasmids are not sterile. For experiments where strict sterility is required, filtration with 0.22um filter is required.
RefSeq:	NM_002001.3
RefSeq Size:	1198 bp
RefSeq ORF:	774 bp
Locus ID:	2205
UniProt ID:	P12319
Cytogenetics:	1q23.2
Protein Families:	Transmembrane
Protein Pathways:	Asthma, Fc epsilon RI signaling pathway
MW:	29.6 kDa
Gene Summary:	The immunoglobulin epsilon receptor (IgE receptor) is the initiator of the allergic response. When two or more high-affinity IgE receptors are brought together by allergen-bound IgE molecules, mediators such as histamine that are responsible for allergy symptoms are released. This receptor is comprised of an alpha subunit, a beta subunit, and two gamma subunits. The protein encoded by this gene represents the alpha subunit. [provided by RefSeq, Aug 2011]

Product images:



Circular map for RC203321



Western blot validation of overexpression lysate (Cat# [LY400730]) using anti-DDK antibody (Cat# [TA50011-100]). Left: Cell lysates from untransfected HEK293T cells; Right: Cell lysates from HEK293T cells transfected with RC203321 using transfection reagent MegaTran 2.0 (Cat# [TT210002]).