

Product datasheet for RC203318

USE1 (NM_018467) Human Tagged ORF Clone

Product data:

Product Type:	Expression Plasmids
Product Name:	USE1 (NM_018467) Human Tagged ORF Clone
Tag:	Myc-DDK
Symbol:	USE1
Synonyms:	D12; MDS032; P31; SLT1
Mammalian Cell Selection:	Neomycin
Vector:	pCMV6-Entry (PS100001)
E. coli Selection:	Kanamycin (25 ug/mL)
ORF Nucleotide Sequence:	>RC203318 ORF sequence Red=Cloning site Blue=ORF Green=Tags(s)

TTTTGTAATACGACTCACTATAGGGCGCCGGGAATTCGTCGACTGGATCCGGTACCGAGGAGATCTGCC
GCC**CGATCGCC**

ATGGCGGCGTCGAGGCTGGAGCTAAACCTGGTGC GGCTGCTATCCCGCTGCGAGGCGATGGCAGCGGAGA
AACGGGACCCGGACGAGTGGCGCCTGGAGAAGTACGTGGGAGCCCTAGAGGACATGTTGCAGGCCCTGAA
GGTCCACGCGAGCAAACCGGCCTCTGAGGTGATCAATGAATATTCCTGGAAGGTGGATTTCTGAAGGGG
ATGCTGCAAGCCGAGAAGCTGACCTCCTCCTCAGAGAAAGCACTGGCCAACCAGTTCCTGGCCCCCTGGCC
GTGTGCCAACACAGCCAGAGAGCGAGTGCCCGCCACAAAGACGGTGCATCTGCAGTCACGGGCGCGGTA
CACCAGCGAGATGCGGAGTGAGCTACTAGGCACGGACTCTGCAGAGCCTGAGATGGACGTAAGGAAGAGA
ACTGGAGTGGCAGGGTCCCAGCCAGTGAGTGAGAAGCAGTCGGCAGCTGAGCTAGACCTCGTCTGCAGC
GACATCAGAACCTCCAGGAAAAGCTGGCGGAAGAGATGCTAGGACTGGCCCGGAGCCTCAAGACCAATAC
CCTGGCCGCCAGAGTGTCAATCAAGAAGGACAACCAGACCCTGTCACTCACTGAAAATGGCGGACCAG
AACCTGGAGAACTGAAGACGGAGTCAGAGCGTCTGGAGCAGCACACGCAGAAGTCAGTCAACTGGCTGC
TCTGGCCATGCTCATTATCGTCTGCTTTCATCTTATTAGCATGATCCTTTCATTCCAATCATGCCTAA
ACTCAA

ACGCGTACGCGGCCGCTCGAGCAGAAACTCATCTCAGAAGAGGATCTGGCAGCAAATGATATCCTGGATT
ACAAGGATGACGACGATAAGGTTTAA



[View online »](#)

Protein Sequence: >RC203318 protein sequence
Red=Cloning site Green=Tags(s)

MAASRLELNLRLLSRCEAMAAEKRPDEWRLEKYVGALEDMLQALKVHASKPASEVINEYSWKVDFLKG
 MLQAEKLTSSSEKALANQFLAPGRVPTTARERVPATKTVHLQSRARYTSEMRSELLGTDSAEPMDVRKR
 TGVAGSQPVSEKQSAEELDLVLQRHQNLQEKLAEEMLGLARSLKTNTLAAQSVIKKDNQTLSHSLKMAHQ
 NLEKLTESERLEQHTQKSVNWLLWAMLIIIVCFIFISMILFIRIMPCLK

TRTRPLEQKLISEEDLAANDILDYKDDDDKV

Chromatograms: https://cdn.origene.com/chromatograms/mk6417_h01.zip

Restriction Sites: SgfI-MluI

Cloning Scheme:

Cloning sites used for ORF Shuttling:



* The last codon before the Stop codon of the ORF

ACCN: NM_018467

ORF Size: 777 bp

OTI Disclaimer: The molecular sequence of this clone aligns with the gene accession number as a point of reference only. However, individual transcript sequences of the same gene can differ through naturally occurring variations (e.g. polymorphisms), each with its own valid existence. This clone is substantially in agreement with the reference, but a complete review of all prevailing variants is recommended prior to use. [More info](#)

OTI Annotation: This clone was engineered to express the complete ORF with an expression tag. Expression varies depending on the nature of the gene.

Components: The ORF clone is ion-exchange column purified and shipped in a 2D barcoded Matrix tube containing 10ug of transfection-ready, dried plasmid DNA (reconstitute with 100 ul of water).

Reconstitution Method:

1. Centrifuge at 5,000xg for 5min.
2. Carefully open the tube and add 100ul of sterile water to dissolve the DNA.
3. Close the tube and incubate for 10 minutes at room temperature.
4. Briefly vortex the tube and then do a quick spin (less than 5000xg) to concentrate the liquid at the bottom.
5. Store the suspended plasmid at -20°C. The DNA is stable for at least one year from date of shipping when stored at -20°C.

RefSeq: [NM_018467.3](#)

RefSeq Size: 877 bp

RefSeq ORF: 780 bp

Locus ID: 55850

UniProt ID: [Q9NZ43](#)

Cytogenetics: 19p13.11

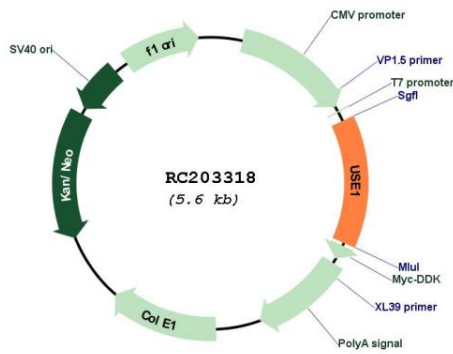
Protein Families: Transmembrane

Protein Pathways: SNARE interactions in vesicular transport

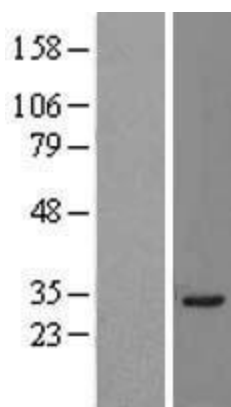
MW: 29.3 kDa

Gene Summary: SNARE that may be involved in targeting and fusion of Golgi-derived retrograde transport vesicles with the ER.[UniProtKB/Swiss-Prot Function]

Product images:



Circular map for RC203318



Western blot validation of overexpression lysate (Cat# [LY413045]) using anti-DDK antibody (Cat# [TA50011-100]). Left: Cell lysates from untransfected HEK293T cells; Right: Cell lysates from HEK293T cells transfected with RC203318 using transfection reagent MegaTran 2.0 (Cat# [TT210002]).