

## Product datasheet for **RC203315**

### **BNIP3L (NM\_004331) Human Tagged ORF Clone**

#### Product data:

Product Type:	Expression Plasmids
Product Name:	BNIP3L (NM_004331) Human Tagged ORF Clone
Tag:	Myc-DDK
Symbol:	BNIP3L
Synonyms:	BNIP3a; NIX
Mammalian Cell Selection:	Neomycin
Vector:	pCMV6-Entry (PS100001)
E. coli Selection:	Kanamycin (25 ug/mL)
ORF Nucleotide Sequence:	>RC203315 ORF sequence Red=Cloning site Blue=ORF Green=Tags(s)

TTTTGTAATACGACTCACTATAGGGCGCCGGGAATTCGTCGACTGGATCCGGTACCGAGGAGATCTGCC  
GCC**CGATCGCC**

ATGTCGTCCCACCTAGTCGAGCCGCCGCCCTGCACAACAACAACAACACTGCGAGGAAAATGAGC  
AGTCTCTGCCCCCGCCGGCCGGCCTCAACAGTTCCTGGGTGGAGCTACCCATGAACAGCAGCAATGGCAA  
TGATAATGGCAATGGGAAAAATGGGGGCTGGAACACGTACCATCCTCATCCTCCATCCACAATGGAGAC  
ATGGAGAAGATTCTTTGGATGCACAACATGAATCAGGACAGAGTAGTTCCAGAGGCAGTTCTCACTGTG  
ACAGCCCTTCGCCACAAGAAGATGGGCAGATCATGTTTGTGTGAAATGCACACCAGCAGGGACCATAG  
CTCTCAGTCAGAAGAAGATTGTAGAAGGAGAGAAGGAAGTCGAGGCTTTGAAGAAAAGTGGCGACTGG  
GTATCAGACTGGTCCAGTAGACCCGAAAACATTCCACCCAAGGAGTTCACCTTCAGACACCCATAACGTT  
CTGTGTCTTTAAGCATGAGGAAAAGTGGAGCCATGAAGAAAGGGGTATTTCTCCGCAGAAATTTCTGAA  
GGTGTTCATTCCATCTCTCTTTCTCATGTTTGGCTTTGGGGCTAGGCATCTATATTGAAAAGCGA  
CTGAGCACACCCTCTGCCAGCACCTAC

**ACGCGT**ACGCGGGCCGCTCGAGCAGAAACTCATCTCAGAAGAGGATCTGGCAGCAAATGATATCTGGATT  
ACAAGGATGACGACGATAAGGTTTAA



[View online »](#)

**Protein Sequence:** >RC203315 protein sequence  
Red=Cloning site Green=Tags(s)

MSSHLVEPPPPLHNNNNCEENEQSLPPPAGLNSSWVELPMNSSNGNDNGNGKNGGLEHVPSSSSSIHNGD  
 MEKILLDAQHESGQSSSRGSSSHCDSPSPQEDGQIMFDVEMHTSRDHSSQSEEEVVEGEKEVEALKKSADW  
 VSDWSSRPENIPPKEFHFRHPKRSVSLSMRKSGAMKGGIFSAEFLKVFIPSLFLSHVLALGLGIYIGKR  
 LSTPSASTY

TRTRPLEQKLISEEDLAANDILDYKDDDDKV

**Chromatograms:** [https://cdn.origene.com/chromatograms/mk6056\\_e02.zip](https://cdn.origene.com/chromatograms/mk6056_e02.zip)

**Restriction Sites:** SgfI-MluI

**Cloning Scheme:**



**ACCN:** NM\_004331

**ORF Size:** 657 bp

**OTI Disclaimer:** The molecular sequence of this clone aligns with the gene accession number as a point of reference only. However, individual transcript sequences of the same gene can differ through naturally occurring variations (e.g. polymorphisms), each with its own valid existence. This clone is substantially in agreement with the reference, but a complete review of all prevailing variants is recommended prior to use. [More info](#)

**OTI Annotation:** This clone was engineered to express the complete ORF with an expression tag. Expression varies depending on the nature of the gene.

**Components:** The ORF clone is ion-exchange column purified and shipped in a 2D barcoded Matrix tube containing 10ug of transfection-ready, dried plasmid DNA (reconstitute with 100 ul of water).

**Reconstitution Method:**

1. Centrifuge at 5,000xg for 5min.
2. Carefully open the tube and add 100ul of sterile water to dissolve the DNA.
3. Close the tube and incubate for 10 minutes at room temperature.
4. Briefly vortex the tube and then do a quick spin (less than 5000xg) to concentrate the liquid at the bottom.
5. Store the suspended plasmid at -20°C. The DNA is stable for at least one year from date of shipping when stored at -20°C.

**Note:** Plasmids are not sterile. For experiments where strict sterility is required, filtration with 0.22um filter is required.

**RefSeq:** [NM\\_004331.3](#)

**RefSeq Size:** 3505 bp

**RefSeq ORF:** 660 bp

**Locus ID:** 665

**UniProt ID:** [O60238](#)

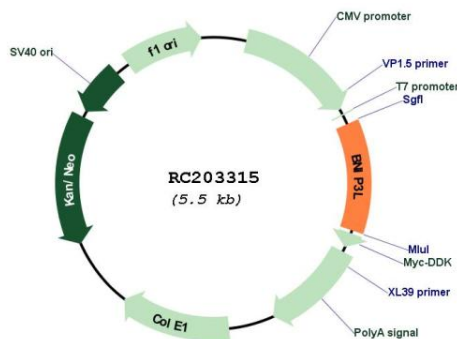
**Cytogenetics:** 8p21.2

**Protein Families:** Druggable Genome, Transmembrane

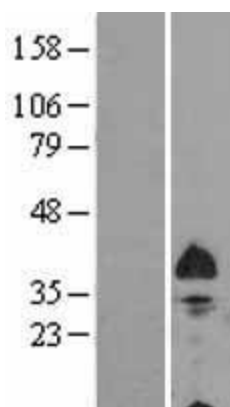
**MW:** 23.9 kDa

**Gene Summary:** This gene encodes a protein that belongs to the pro-apoptotic subfamily within the Bcl-2 family of proteins. The encoded protein binds to Bcl-2 and possesses the BH3 domain. The protein directly targets mitochondria and causes apoptotic changes, including loss of membrane potential and the release of cytochrome c. [provided by RefSeq, Feb 2015]

## Product images:



Circular map for RC203315



Western blot validation of overexpression lysate (Cat# [LY401379]) using anti-DDK antibody (Cat# [TA50011-100]). Left: Cell lysates from untransfected HEK293T cells; Right: Cell lysates from HEK293T cells transfected with RC203315 using transfection reagent MegaTran 2.0 (Cat# [TT210002]).