

Product datasheet for **RC203306**

UBE2B (NM_003337) Human Tagged ORF Clone

Product data:

Product Type: Expression Plasmids
Product Name: UBE2B (NM_003337) Human Tagged ORF Clone
Tag: Myc-DDK
Symbol: UBE2B
Synonyms: E2-17kDa; HHR6B; HR6B; RAD6B; UBC2
Mammalian Cell Selection: Neomycin
Vector: pCMV6-Entry (PS100001)
E. coli Selection: Kanamycin (25 ug/mL)
ORF Nucleotide Sequence: >RC203306 representing NM_003337
Red=Cloning site Blue=ORF Green=Tags(s)

TTTTGTAATACGACTCACTATAGGGCGGCCGGAATTCGTCGACTGGATCCGGTACCGAGGAGATCTGCC
GCC**CGATCGCC**

ATGTCGACCCCGCCGGAGGAGGCTCATGCGGGATTTCAAGCGTTACAAGAGGACCCACCTGTGGGTG
TCAGTGGCGCACCATCTGAAAACAACATCATGCAGTGGAAATGCAGTTATATTTGGACCAGAAGGGACACC
TTTTGAAGATGGTACTTTTAACTAGTAATAGAATTTTCTGAAGAATATCCAAATAAACCACTGTT
AGGTTTTATCCAAAATGTTTCATCCAAATGTGTATGCTGATGGTAGCATATGTTAGATATCCTTCAGA
ATCGATGGAGTCCAACATATGATGTATCTTCTATCTTAACATCAATTCAGTCTCTGCTGGATGAACCGAA
TCCTAACAGTCCAGCCAATAGCCAGGCAGCACAGCTTTATCAGGAAAACAACGAGAATATGAGAAAAGA
GTTTCGGCCATTGTTGAACAAAGCTGGAATGATTCA

ACGCGTACGCGGCCGCTCGAGCAGAACTCATCTCAGAAGAGGATCTGGCAGCAAATGATATCCTGGATT
ACAAGGATGACGACGATAAGGTTTAA

Protein Sequence: >RC203306 representing NM_003337
Red=Cloning site Green=Tags(s)
MSTPARRRLMRDFKRLQEDPPVGVSGAPSENNIMQWNAVIFGPEGTPFEDGTFKLVIEFSEEYPNKPPTV
RFLSKMFHPNVYADGSICLDILQNRWSPYDVSSILTSIQSLLEPNPNPANSQAAQLYQENKREYEKR
VSAIVEQSWNDS

TRTRPLEQKLISEEDLAANDILDYKDDDDKV

Chromatograms: https://cdn.origene.com/chromatograms/mg2875_a11.zip



[View online »](#)

Restriction Sites: SgfI-MluI

Cloning Scheme:



ACCN: NM_003337

ORF Size: 456 bp

OTI Disclaimer: The molecular sequence of this clone aligns with the gene accession number as a point of reference only. However, individual transcript sequences of the same gene can differ through naturally occurring variations (e.g. polymorphisms), each with its own valid existence. This clone is substantially in agreement with the reference, but a complete review of all prevailing variants is recommended prior to use. [More info](#)

OTI Annotation: This clone was engineered to express the complete ORF with an expression tag. Expression varies depending on the nature of the gene.

Components: The ORF clone is ion-exchange column purified and shipped in a 2D barcoded Matrix tube containing 10ug of transfection-ready, dried plasmid DNA (reconstitute with 100 ul of water).

Reconstitution Method:

1. Centrifuge at 5,000xg for 5min.
2. Carefully open the tube and add 100ul of sterile water to dissolve the DNA.
3. Close the tube and incubate for 10 minutes at room temperature.
4. Briefly vortex the tube and then do a quick spin (less than 5000xg) to concentrate the liquid at the bottom.
5. Store the suspended plasmid at -20°C. The DNA is stable for at least one year from date of shipping when stored at -20°C.

Note: Plasmids are not sterile. For experiments where strict sterility is required, filtration with 0.22um filter is required.

RefSeq: [NM_003337.4](#)

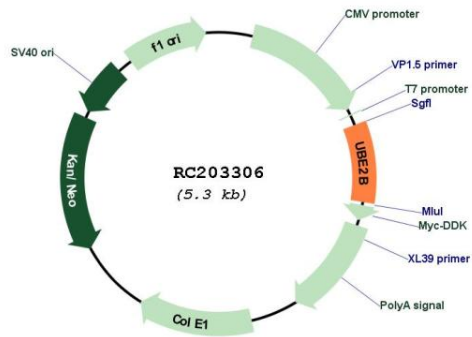
RefSeq Size: 2631 bp

RefSeq ORF: 459 bp

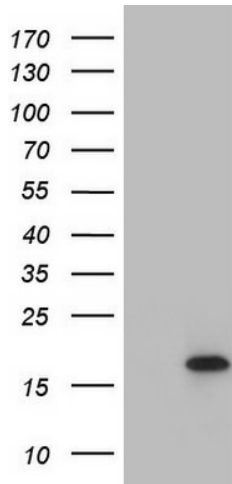
Locus ID: 7320
UniProt ID: [P63146](#)
Cytogenetics: 5q31.1
Domains: UBCc
Protein Families: Druggable Genome
Protein Pathways: Ubiquitin mediated proteolysis
MW: 17.1 kDa

Gene Summary: The modification of proteins with ubiquitin is an important cellular mechanism for targeting abnormal or short-lived proteins for degradation. Ubiquitination involves at least three classes of enzymes: ubiquitin-activating enzymes, or E1s, ubiquitin-conjugating enzymes, or E2s, and ubiquitin-protein ligases, or E3s. This gene encodes a member of the E2 ubiquitin-conjugating enzyme family. This enzyme is required for post-replicative DNA damage repair. Its protein sequence is 100% identical to the mouse, rat, and rabbit homologs, which indicates that this enzyme is highly conserved in eukaryotic evolution. [provided by RefSeq, Jul 2008]

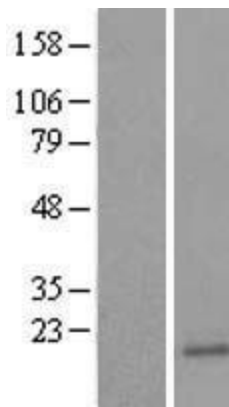
Product images:



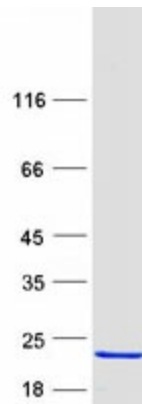
Circular map for RC203306



HEK293T cells were transfected with the pCMV6-ENTRY control (Cat# [PS100001], Left lane) or pCMV6-ENTRY UBE2B (Cat# RC203306, Right lane) cDNA for 48 hrs and lysed. Equivalent amounts of cell lysates (5 ug per lane) were separated by SDS-PAGE and immunoblotted with anti-UBE2B (Cat# [TA803573]). Positive lysates [LY418755] (100ug) and [LC418755] (20ug) can be purchased separately from OriGene.



Western blot validation of overexpression lysate (Cat# [LY418755]) using anti-DDK antibody (Cat# [TA50011-100]). Left: Cell lysates from untransfected HEK293T cells; Right: Cell lysates from HEK293T cells transfected with RC203306 using transfection reagent MegaTran 2.0 (Cat# [TT210002]).



Coomassie blue staining of purified UBE2B protein (Cat# [TP303306]). The protein was produced from HEK293T cells transfected with UBE2B cDNA clone (Cat# RC203306) using MegaTran 2.0 (Cat# [TT210002]).