

Product datasheet for RC203305L1

N acetyl transferase 5 (NAA20) (NM_016100) Human Tagged Lenti ORF Clone

Product data:

Product Type:	Expression Plasmids
Product Name:	N acetyl transferase 5 (NAA20) (NM_016100) Human Tagged Lenti ORF Clone
Tag:	Myc-DDK
Symbol:	N acetyl transferase 5
Synonyms:	dj1002M8.1; NAT3; NAT3P; NAT5; NAT5P
Mammalian Cell Selection:	None
Vector:	pLenti-C-Myc-DDK (PS100064)
E. coli Selection:	Chloramphenicol (34 ug/mL)
ORF Nucleotide Sequence:	The ORF insert of this clone is exactly the same as(RC203305).
Restriction Sites:	SgfI-MluI
Cloning Scheme:	

Cloning sites used for ORF Shuttling:



* The last codon before the Stop codon of the ORF.

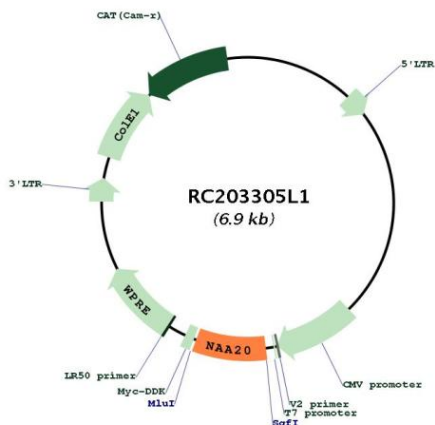
ACCN:	NM_016100
ORF Size:	534 bp



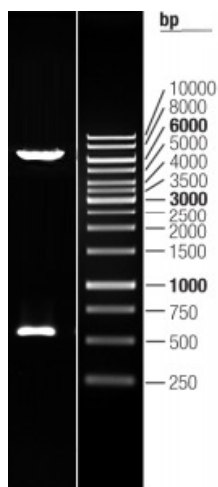
[View online >](#)

OTI Disclaimer:	The molecular sequence of this clone aligns with the gene accession number as a point of reference only. However, individual transcript sequences of the same gene can differ through naturally occurring variations (e.g. polymorphisms), each with its own valid existence. This clone is substantially in agreement with the reference, but a complete review of all prevailing variants is recommended prior to use. More info
OTI Annotation:	This clone was engineered to express the complete ORF with an expression tag. Expression varies depending on the nature of the gene.
Components:	The ORF clone is ion-exchange column purified and shipped in a 2D barcoded Matrix tube containing 10ug of transfection-ready, dried plasmid DNA (reconstitute with 100 ul of water).
Reconstitution Method:	<ol style="list-style-type: none"> 1. Centrifuge at 5,000xg for 5min. 2. Carefully open the tube and add 100ul of sterile water to dissolve the DNA. 3. Close the tube and incubate for 10 minutes at room temperature. 4. Briefly vortex the tube and then do a quick spin (less than 5000xg) to concentrate the liquid at the bottom. 5. Store the suspended plasmid at -20°C. The DNA is stable for at least one year from date of shipping when stored at -20°C.
RefSeq:	NM_016100.2
RefSeq Size:	1102 bp
RefSeq ORF:	537 bp
Locus ID:	51126
UniProt ID:	A6NHA3
Cytogenetics:	20p11.23
Domains:	Acetyltransf
Protein Pathways:	Glycerophospholipid metabolism, Limonene and pinene degradation, Phenylalanine metabolism, Tyrosine metabolism
MW:	20.4 kDa
Gene Summary:	NAT5 is a component of N-acetyltransferase complex B (NatB). Human NatB performs cotranslational N(alpha)-terminal acetylation of methionine residues when they are followed by asparagine (Starheim et al., 2008 [PubMed 18570629]).[supplied by OMIM, Apr 2009]

Product images:



Circular map for RC203305L1



Double digestion of RC203305L1 using SgfI and MluI