

Product datasheet for **RC203301**

C1D (NM_173177) Human Tagged ORF Clone

Product data:

Product Type: Expression Plasmids
Product Name: C1D (NM_173177) Human Tagged ORF Clone
Tag: Myc-DDK
Symbol: C1D
Synonyms: hC1D; LRP1; Rrp47; SUN-CoR; SUNCOR
Mammalian Cell Selection: Neomycin
Vector: pCMV6-Entry (PS100001)
E. coli Selection: Kanamycin (25 ug/mL)
ORF Nucleotide Sequence: >RC203301 ORF sequence
Red=Cloning site **Blue**=ORF **Green**=Tags(s)

TTTTGTAATACGACTCACTATAGGGCGGCCGGAATTCGTCGACTGGATCCGGTACCGAGGAGATCTGCC
GCC**CGATCGC**

ATGGCAGGTGAAGAAATTAATGAAGACTATCCAGTAGAAATTCACGAGTATTTGTGACGTTTGAGAATT
CCATTGGTGCTGTGGATGAGATGCTGAAGACCATGATGTCTGTTCTAGAAATGAGTTGTGCAGAAAGTT
GGATCCACTTGAACAAGCAAAAGTGGATTGGTTTCTGCATACACATTAAATTCAATGTTTGGGTTTAT
TTGGCAACCCAAGGAGTTAATCCTAAGGAACATCCAGTAAACAGGAATTGAAAGAATCAGAGTATATA
TGAACAGAGTCAAGGAAATAACAGACAAGAAAAAGGCTGGCAAGCTGGACAGAGGTGCAGCTTCAAGATT
TGTAATAAATGCCCTCTGGGAACCAAAATCGAAAAATGCATCAAAAGTTGCCAATAAAGGAAAAAGTAA
AGT

ACGCGTACGCGGCCGCTCGAGCAGAACTCATCTCAGAAGAGGATCTGGCAGCAAATGATATCCTGGATT
ACAAGGATGACGACGATAAGGTTTAA

Protein Sequence: >RC203301 protein sequence
Red=Cloning site **Green**=Tags(s)

MAGEEINEDYPVEIHEYLSAFENSIGAVDEMLKTMMSVSRNELLQKLDPLEQAKVDLV SAYTLNSMFWVY
LATQGVNPKHEHPVKQELERIRVYMN RVKEITDKK KAGKLD RGAASRFVKNALWEPKSKNASKVANKGKSK
S

TRTRPLEQKLISEEDLAANDILDYKDDDDKV

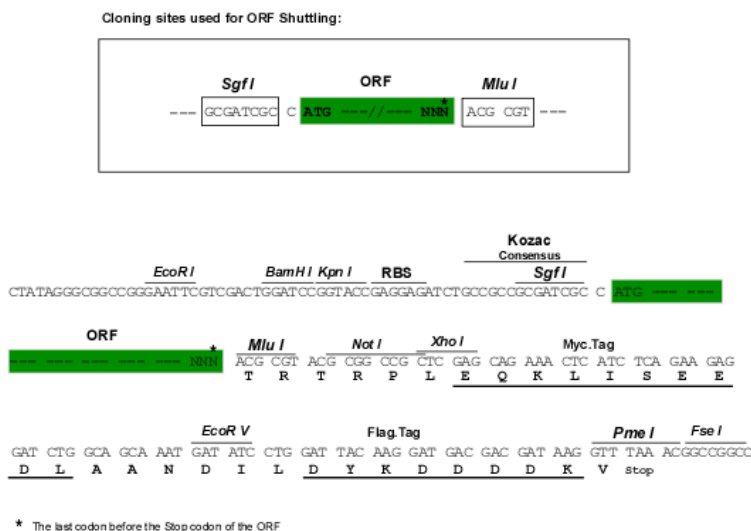
Chromatograms: https://cdn.origene.com/chromatograms/mk6428_a12.zip



[View online »](#)

Restriction Sites: Sgfl-MluI

Cloning Scheme:



ACCN: NM_173177

ORF Size: 423 bp

OTI Disclaimer: The molecular sequence of this clone aligns with the gene accession number as a point of reference only. However, individual transcript sequences of the same gene can differ through naturally occurring variations (e.g. polymorphisms), each with its own valid existence. This clone is substantially in agreement with the reference, but a complete review of all prevailing variants is recommended prior to use. [More info](#)

OTI Annotation: This clone was engineered to express the complete ORF with an expression tag. Expression varies depending on the nature of the gene.

Components: The ORF clone is ion-exchange column purified and shipped in a 2D barcoded Matrix tube containing 10ug of transfection-ready, dried plasmid DNA (reconstitute with 100 ul of water).

Reconstitution Method:

1. Centrifuge at 5,000xg for 5min.
2. Carefully open the tube and add 100ul of sterile water to dissolve the DNA.
3. Close the tube and incubate for 10 minutes at room temperature.
4. Briefly vortex the tube and then do a quick spin (less than 5000xg) to concentrate the liquid at the bottom.
5. Store the suspended plasmid at -20°C. The DNA is stable for at least one year from date of shipping when stored at -20°C.

RefSeq: [NM_173177.3](#)

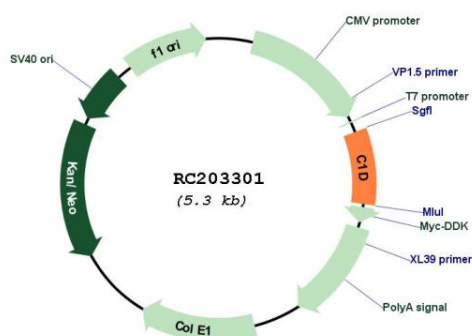
RefSeq Size: 1194 bp

RefSeq ORF: 426 bp

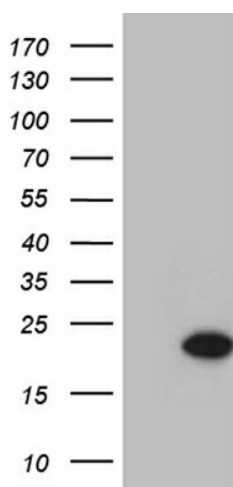
Locus ID: 10438

UniProt ID:	<u>Q13901</u>
Cytogenetics:	2p14
Protein Families:	Druggable Genome
Protein Pathways:	RNA degradation
MW:	16 kDa
Gene Summary:	The protein encoded by this gene is a DNA binding and apoptosis-inducing protein and is localized in the nucleus. It is also a Rac3-interacting protein which acts as a corepressor for the thyroid hormone receptor. This protein is thought to regulate TRAX/Translin complex formation. Alternate splicing results in multiple transcript variants that encode the same protein. Multiple pseudogenes of this gene are found on chromosome 10.[provided by RefSeq, Jun 2010]

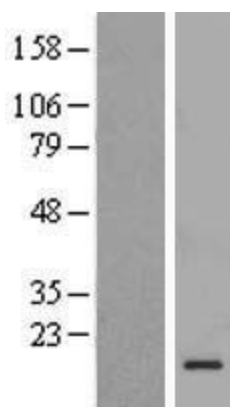
Product images:



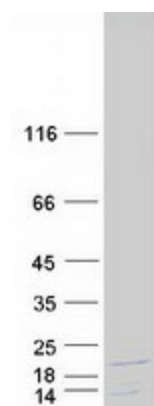
Circular map for RC203301



HEK293T cells were transfected with the pCMV6-ENTRY control (Cat# [PS100001], Left lane) or pCMV6-ENTRY C1D (Cat# RC203301, Right lane) cDNA for 48 hrs and lysed. Equivalent amounts of cell lysates (5 ug per lane) were separated by SDS-PAGE and immunoblotted with anti-C1D (Cat# [TA810508])(1:2000). Positive lysates [LY406634] (100ug) and [LC406634] (20ug) can be purchased separately from OriGene.



Western blot validation of overexpression lysate (Cat# [LY406634]) using anti-DDK antibody (Cat# [TA50011-100]). Left: Cell lysates from untransfected HEK293T cells; Right: Cell lysates from HEK293T cells transfected with RC203301 using transfection reagent MegaTran 2.0 (Cat# [TT210002]).



Coomassie blue staining of purified C1D protein (Cat# [TP303301]). The protein was produced from HEK293T cells transfected with C1D cDNA clone (Cat# RC203301) using MegaTran 2.0 (Cat# [TT210002]).