

Product datasheet for **RC203294**

PIAS2 (NM_173206) Human Tagged ORF Clone

Product data:

Product Type:	Expression Plasmids
Product Name:	PIAS2 (NM_173206) Human Tagged ORF Clone
Tag:	Myc-DDK
Symbol:	PIAS2
Synonyms:	ARIP3; DIP; MIZ1; PIASX; SIZ2; ZMIZ4
Vector:	pCMV6-Entry (PS100001)
E. coli Selection:	Kanamycin (25 ug/mL)
Cell Selection:	Neomycin



[View online »](#)

ORF Nucleotide Sequence:

>RC203294 ORF sequence
 Red=Cloning site Blue=ORF Green=Tags(s)

TTTTGTAATACGACTCACTATAGGGCGGCCGGAATTCGTCGACTGGATCCGGTACCGAGGAGATCTGCC
 GCC**GCGATCGCC**

ATGGCGGATTTTCAAGAGTTGAGGAATATGGTTTCTAGTTTTAGGTTTTCTGAACACTACAAGTACTACTAG
 GCTTTGCTGGACGAATAAAAGTGGACGCAAGCATGACCTCCTGATGAGGGCGCTGCATTTATTGAAGAG
 CGGCTGCAGCCCTGCGGTTTCAAGATTAAATCCGAGAATTGTATAGACGCCGATATCCACGAACCTTGAA
 GGACTTTCTGATTTATCCACAATCAAATCATCGGTTTTAGTTTGGATGGTGGCTCATCACCTGTAGAAC
 CTGACTTGGCCGTGGCTGGAATCCACTCGTTGCCCTTCCACTTCACTTACACCTCACTCACCATCTCTCC
 TGTTGGTTCTGTCTGCTCAAGATACTAAGCCACATTTGAGATGCAGCAGCCATCTCCCCAATTCTCT
 CCTGTCCATCCTGATGTGCAGTTAAAAATCTGCCCTTTATGATGTCTTGTATGTTCTCATCAAGCCCA
 CGAGTTTAGTTCAAAGCAGTATTCAGCGATTTCAAGAGAAGTTTTTTATTTTTGCTTTGACACCTCAACA
 AGTTAGAGAGATATGCATATCCAGGGATTTTTTCCAGGTGGTAGGAGAGATTATACAGTCCAAGTTCAG
 TTGAGACTTTGCCTGGCAGAGACAAGTTGCCCTCAAGAAGATAACTATCCAAATAGTCTATGTATAAAAG
 TAAATGGGAAGCTATTTCTTTGCTGGCTATGCACCACCGCCTAAAAATGGGATTGAACAGAAGCGCCC
 TGGACGCCCTTGAATATTACATCTTTAGTTAGGTTATCTTACAGCTGTGCCAAACCAATTTCCATTTCT
 TGGGCATCAGAAATTGGGAAGAATTACTCTATGTCTGTATATCTTGTACGGCAGCTTACATCAGCCATGT
 TATTACAGAGATTAATAATGAAAGGTATTAGAAACCTGATCATTCCAGAGCACTAATTAAGAAAAACT
 TACTGCAGATCCTGATAGTGAATTGCTACAAC TAGCCTCGGGTATCCTTGTATGTGCCCTTTAGGAAAA
 ATGAGGCTGACAAATCCCATGCCGTGCAGTACTGTACACATGTCAGTGTTTTGTATGCTGCCCTCTATC
 TACAAATGAATGAGAAAAAGCCACCTGGATTTGCTGTGTGACAAAAAGCTGCCTATGAAAGTCT
 AATATTAGATGGGCTTTTTATGGAAATCTCAATGACTGTTCTGATGTAGATGAGATCAAATTTCAAGAA
 GATGGTTCTTGGTGTCCAATGAGACCGAAGAAAGAAGCTATGAAAGTATCCAGCCAACCGTGTACAAAA
 TAGAAAGTTCAAGCGTCTCAGTAAGCCTGTTCAGTACTGTAGCCAGTGAGGCAAGCAAGAAGAAAGT
 AGATGTTATTGATCTTACAATAGAAAGCTCTTCTGACGAAGAGGAAGACCCTCCTGCCAAAAGGAAATGC
 ATCTTTATGTCAGAAACACAAAGCAGCCCAACCAAGGGGTTCTCATGTATCAGCCATCTTCTGTAAGGG
 TGCCAGTGTGACTTCGGTTGATCCTGCTGCTATTCCGCCTTCAATACAGACTACTCAGTACCATTCCA
 CCATACGCCAATATCAAGCATGTCATCAGATTTGCCAGGAGAACAAGAAGAAATGATATTAATAATGAA
 CTGAAGCTTGAACATCTTCTGATACTGTGCAACAG

ACGCGTACGCGGCCGCTCGAGCAGAAACTCATCTCAGAAGAGGATCTGGCAGCAAATGATATCCTGGATT
 ACAAGGATGACGACGATAAGGTTTAA

Protein Sequence:

>RC203294 protein sequence
 Red=Cloning site Green=Tags(s)

MADFEELRNMVSSFRVSELVLLGFAGRNKSGRKHDLMLRALHLLKSGCSPAVQIKIRELYRRRYPRTLE
 GLSDLSTIKSSVFLDGGSSPVEPD LAVAGIHLSPSTSVTPHSPSPVGSVLLQDTKPTFEMQQPSPPIP
 PVHPDVQLKNLPHYDVLVLIKPTSLVQSSIQRFQEKFFIFALTPQQVREICISRDFLPGGRRDYTVQVQ
 LRLCLAETSCPQEDNYPNSLCIKVNGKLFPLPGYAPPPKNGIEQKRPRPLNITSLVRLSSAVPNQISIS
 WASEIGKNYSMSVYLVRQLTSAMLLQRLKMKGIRNPDHSRALIKEKLTADPDSEIATTSLRVSLMCPGK
 MRLTIPCAVCTHLQCFDAALYLQMNKKTWICPVCDKKAAYESLILDGLFMEILNDCSDVDEIKFQE
 DGSWCPMRPKKEAMKVVSSQPCTKIESSSVL SKPCSVTVASEASKKKVDVIDLTISSSDDEEDPPAKRKC
 IFMSETQSPTKGLMYQPSSVRVPSVTSVDPAAIPPSLTDYSVPFHHTPISSMSSDLPGEQRRNDINNE
 LKLGTSDDTVQQ

TRTRPLEQKLISEEDLAANDILDYKDDDDKV

Chromatograms:

https://cdn.origene.com/chromatograms/mk6569_f12.zip

Restriction Sites:

Sgfl-MluI

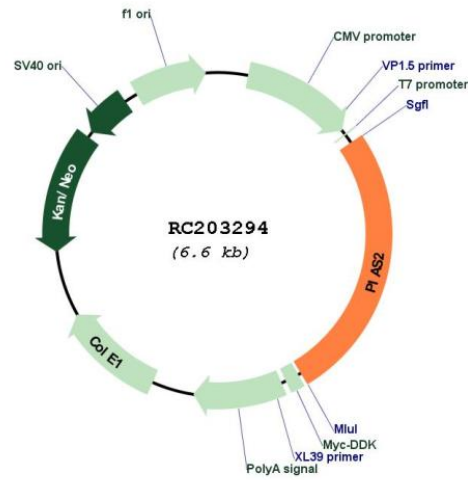
Cloning Scheme:

Cloning sites used for ORF Shutting:



* The last codon before the Stop codon of the ORF

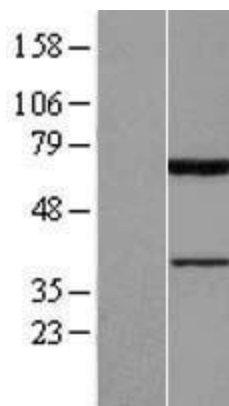
Plasmid Map:



ACCN: NM_173206
 ORF Size: 1716 bp

OTI Disclaimer:	The molecular sequence of this clone aligns with the gene accession number as a point of reference only. However, individual transcript sequences of the same gene can differ through naturally occurring variations (e.g. polymorphisms), each with its own valid existence. This clone is substantially in agreement with the reference, but a complete review of all prevailing variants is recommended prior to use. More info
OTI Annotation:	This clone was engineered to express the complete ORF with an expression tag. Expression varies depending on the nature of the gene.
RefSeq:	NM_173206.4
RefSeq Size:	4573 bp
RefSeq ORF:	1719 bp
Locus ID:	9063
UniProt ID:	O75928
Protein Families:	Stem cell - Pluripotency, Stem cell relevant signaling - JAK/STAT signaling pathway, Transcription Factors
Protein Pathways:	Jak-STAT signaling pathway, Pathways in cancer, Small cell lung cancer, Ubiquitin mediated proteolysis
MW:	63.4 kDa
Gene Summary:	This gene encodes a member of the protein inhibitor of activated STAT family, which function as SUMO E3 ligases and play important roles in many cellular processes by mediating the sumoylation of target proteins. Alternatively spliced transcript variants encoding multiple isoforms have been observed for this gene. Isoforms of the encoded protein enhance the sumoylation of specific target proteins including the p53 tumor suppressor protein, c-Jun, and the androgen receptor. A pseudogene of this gene is located on the short arm of chromosome 4. The symbol MIZ1 has also been associated with ZBTB17 which is a different gene located on chromosome 1. [provided by RefSeq, Aug 2017]

Product images:



Western blot validation of overexpression lysate (Cat# [LY406651]) using anti-DDK antibody (Cat# [TA50011-100]). Left: Cell lysates from untransfected HEK293T cells; Right: Cell lysates from HEK293T cells transfected with RC203294 using transfection reagent MegaTran 2.0 (Cat# [TT210002]).