

Product datasheet for **RC203289**

CCNL1 (NM_020307) Human Tagged ORF Clone

Product data:

Product Type:	Expression Plasmids
Product Name:	CCNL1 (NM_020307) Human Tagged ORF Clone
Tag:	Myc-DDK
Symbol:	CCNL1
Synonyms:	ania-6a; ANIA6A; BM-001; PRO1073
Mammalian Cell Selection:	Neomycin
Vector:	pCMV6-Entry (PS100001)
E. coli Selection:	Kanamycin (25 ug/mL)



[View online »](#)

ORF Nucleotide Sequence:

>RC203289 ORF sequence
 Red=Cloning site Blue=ORF Green=Tags(s)

CTATAGGGCGGCCGGGAATTCGTCGACTGGATCCGGTACCGAGGAGATCTGCCGCCGCGATCGCCGGCGC
 GCCC

ATGGCGTCCGGGCTCATTTCGACAGCTACTGCTGCCGAGCCGCCTCATCGGCCGCCCAAGCGCGGGCG
 GCTCCAGCTCCGGGACGACGACCACGACGACGACCACGACGGGAGGGATCCTGATCGGCGATCGCCTGTA
 CTCGGAAGTTTCACTTACCATCGACCACTCTCTGATTCCGGAGGAGAGGCTCTCGCCACCCCATCCATG
 CAGGATGGGCTCGACCTGCCAGTGAGACGGACTTACGCATCCTGGGCTGCGAGCTCATCCAGGCCGCCG
 GCATTCTCCTCCGGCTGCCGAGGTGGCGATGGCAACGGGGCAGGTGTTGTTTCATCGTTTTTCTACTC
 CAAATCTTTCGTCAAACACAGTTTCGAGATTGTTGCTATGGCTTGTATTAATCTTGCATCAAAAATCGAA
 GAAGCACCTAGAAGAATAAGAGATGTGATTAATGTATTCCACCACCTCCGCCAGTTAAGAGGAAAAAGGA
 CTCGAAGCCCTGATCCTTGATCAGAATAACACCAAAAATCAAGTTATCAAAGCAGAGAGGAG
 GGTGCTAAAGGAGTTGGGATTTTGTGTTTCATGTCAAGCATCCTCATAAGATCATTGTTATGTATTTACAA
 GTCTTAGAATGTGAACGTAATCAAACCTGGTTCAAACCTGCCTGGAATTACATGAATGACAGTCTTCGAA
 CCAATGTGTTTGTTCGATTTCAACCAGAGACTATAGCATGTGCTTGCATCTACCTTGCAGCTAGAGCACT
 TCAGATCCGTTGCCAATCGTCCCAATTGGTTTCTTCTTTTGGTACTACAGAAGGAAATCCAGGAA
 ATCTGCATAGAAACACTTAGGCTTTATACCAGAAAAAGCCAAATATGAATTACTGGAAAAAGAAGTAG
 AAAAAAGAAAAGTAGCCTTACAAGAAGCCAAATTAAGCAAGGGATTGAATCCGGATGGAACCTCAGC
 CCTTCAACCTGGGTGGATTTTCTCCAGCCTCCAAGCCATCATCAACAAGAGAAGTAAAAGCTGAAGAG
 AAATCACCAATCTCCATTAATGTGAAGACAGTCAAAAAAGAACCTGAGGATAGACAACAGGCTTCCAAAA
 GCCCTTACAATGGTGTAAAGAAAAGACGAAGAAGTAGAAATAGCAGAAGTCAAGTCGATCGAGGTC
 AAGAACACGATCACGTTCTAGATCACATACTCCAAGAAGACACTATAATAATAGGCGGAGTCGATCTGGA
 ACATACAGCTCGAGATCAAGAAGCAGGTCCCGCAGTCACAGTGAAGCCCTCGAAGACATCATAATCATG
 GTTCTCCTCACCTAAGGCCAAGCATACCAGAGATGATTTAAAAAGTTCAAACAGACATGGTCATAAAAAG
 GAAAAATCTCGTTCTCGATCTCAGAGCAAGTCTCGGGATCACTCAGATGCAGCCAAGAAACACAGGCAT
 GAAAGGGGACATCATAGGGACAGGCGTGAACGATCTCGCTCCTTTGAGAGGTCCCATAAAAGCAAGCACC
 ATGGTGGCAGTCGCTCAGGACATGGCAGGCACAGGCGC

ACGCGTACGCGGCCGCTCGAGCAGAACTCATCTCAGAAGAGGATCTGGCAGCAAATGATATCCTGGATT
 ACAAGGATGACGACGATAAGGTTTAA

Protein Sequence:

>RC203289 protein sequence
 Red=Cloning site Green=Tags(s)

MASGPHSTATAAAAASSAAPSAGGSSSGTTTTTTTTTGGILIGDRLYSEVSLTIDHSLIPEERLSPTPSM
 QDGLDLPSETDLRILGCELIQAAGILLRLPQVAMATGQVLFHRFFYKSFVKHSFEIVAMACINLASKIE
 EAPRRIRDVINVFHHLRQLRGKRTSPPLILDQNYINTKNQVIKAERRVLKELGFCVHKHPHKIIVMYLQ
 VLECERNQTLVQTAWNYMNSLRTNVFVRFQPETIACACIYLAARALQIPLPTRPHWFLFGTTEEEIQE
 ICIETRLRYTRKKPNYELLEKEVEKRVKALQEAALKAKGLNPDGTPALSTLGGFSPASKPSSPREVKAEE
 KSPIISINVKTVKKEPEDRQQASKSPYNGVRKDSKRSRNSRSASRSRSTRSRSRSHTPRRHYNRRSRSG
 TYSSRSRSHSESPRRHNGSPHLKAKHTRDDLKSSNRHGHKRSRSRSQSKSRDHSDAAKKHRH
 ERGHRDRRERSRSFERSHKSHHGGSRSGHRHRR

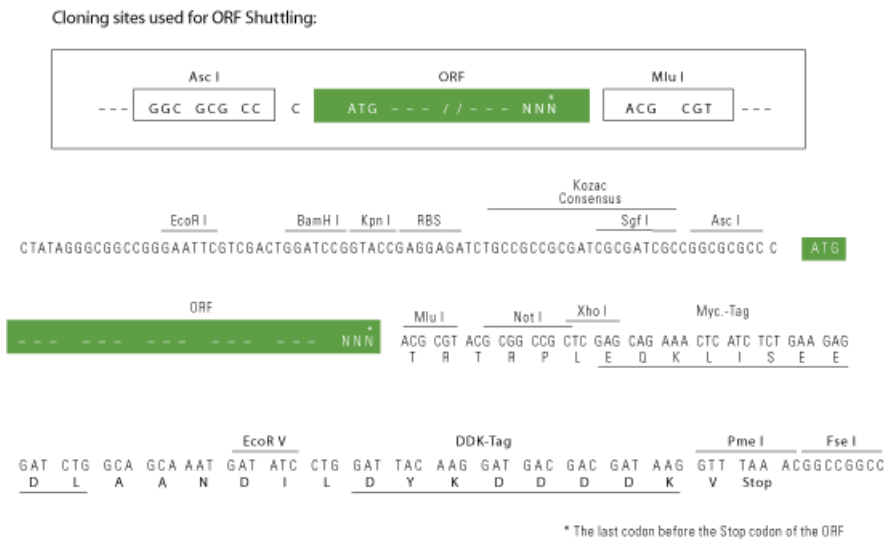
TRTRPLEQKLISEEDLAANDILDYKDDDDKV

Chromatograms:

https://cdn.origene.com/chromatograms/mk6851_b01.zip

Restriction Sites:

Ascl-Mlul

Cloning Scheme:


ACCN: NM_020307

ORF Size: 1578 bp

OTI Disclaimer: The molecular sequence of this clone aligns with the gene accession number as a point of reference only. However, individual transcript sequences of the same gene can differ through naturally occurring variations (e.g. polymorphisms), each with its own valid existence. This clone is substantially in agreement with the reference, but a complete review of all prevailing variants is recommended prior to use. [More info](#)

OTI Annotation: This clone was engineered to express the complete ORF with an expression tag. Expression varies depending on the nature of the gene.

Components: The ORF clone is ion-exchange column purified and shipped in a 2D barcoded Matrix tube containing 10ug of transfection-ready, dried plasmid DNA (reconstitute with 100 ul of water).

Reconstitution Method:

1. Centrifuge at 5,000xg for 5min.
2. Carefully open the tube and add 100ul of sterile water to dissolve the DNA.
3. Close the tube and incubate for 10 minutes at room temperature.
4. Briefly vortex the tube and then do a quick spin (less than 5000xg) to concentrate the liquid at the bottom.
5. Store the suspended plasmid at -20°C. The DNA is stable for at least one year from date of shipping when stored at -20°C.

Note: Plasmids are not sterile. For experiments where strict sterility is required, filtration with 0.22um filter is required.

RefSeq: [NM_020307.4](#)

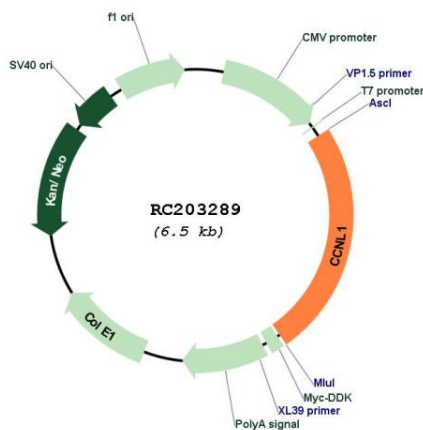
RefSeq Size: 2625 bp

RefSeq ORF: 1581 bp

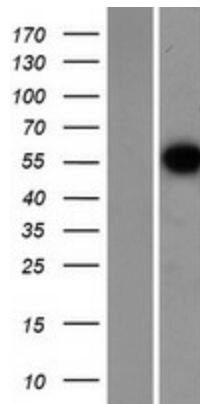
Locus ID: 57018

UniProt ID: [Q9UK58](#)
Cytogenetics: 3q25.31
Domains: CYCLIN, cyclin
Protein Families: Druggable Genome
MW: 59.6 kDa
Gene Summary: Involved in pre-mRNA splicing. Functions in association with cyclin-dependent kinases (CDKs) (PubMed:18216018). Inhibited by the CDK-specific inhibitor CDKN1A/p21 (PubMed:11980906). May play a role in the regulation of RNA polymerase II (pol II). May be a candidate proto-oncogene in head and neck squamous cell carcinomas (HNSCC) (PubMed:12414649, PubMed:15700036).[UniProtKB/Swiss-Prot Function]

Product images:



Circular map for RC203289



Western blot validation of overexpression lysate (Cat# [LY412520]) using anti-DDK antibody (Cat# [TA50011-100]). Left: Cell lysates from untransfected HEK293T cells; Right: Cell lysates from HEK293T cells transfected with RC203289 using transfection reagent MegaTran 2.0 (Cat# [TT210002]).