

Product datasheet for **RC203285**

STARD3NL (NM_032016) Human Tagged ORF Clone

Product data:

Product Type: Expression Plasmids
Product Name: STARD3NL (NM_032016) Human Tagged ORF Clone
Tag: Myc-DDK
Symbol: STARD3NL
Synonyms: MENTHO
Mammalian Cell Selection: Neomycin
Vector: pCMV6-Entry (PS100001)
E. coli Selection: Kanamycin (25 ug/mL)
ORF Nucleotide Sequence: >RC203285 ORF sequence
Red=Cloning site Blue=ORF Green=Tags(s)

TTTTGTAATACGACTCACTATAGGGCGCCGGAATTCGTCGACTGGATCCGGTACCGAGGAGATCTGCC
GCC**CGATCGCC**

ATGAACCACCTGCCAGAAGACATGGAGAACGCTCTCACCGGGAGCCAGAGCTCCCATGCTTCTCTGCGCA
ATATCCATTCCATCAACCCACACAACCTCATGGCCAGGATTGAGTCCTATGAAGGAAGGGAAAAGAAAGG
CATATCTGATGTCAGGAGGACTTCTGTTTGTGGTACCTTTGACCTCTTATTCGTAACATTACTGTGG
ATAATAGAGTTAAATGTGAATGGAGGCATTGAGAACACATTAGAGAAGGAGGTGATGCAGTATGACTACT
ATTCCTCATATTTGATATATTTCTTCTGGCAGTTTTTCGATTTAAAGTGTTAATACTTGCATATGCTGT
GTGCAGACTGCGCATTGGTGGCAATAGCGTTGACAACGGCAGTGACCAGTGCCTTTTTACTAGCAAAA
GTGATCCTTTTCAAGCTTTTCTCAAGGGCTTTTGGCTATGTGCTGCCCATCATTTTCATTCATCCTTG
CCTGGATTGAGACGTGGTTCTGGATTTCAAAGTGTTACCTCAAGAAGCAGAAGAAGAAAACAGACTCCT
GATAGTTCAGGATGCTTCAGAGAGGGCAGCACTTATACCTGGTGGTCTTTCTGATGGTCAGTTTTATTCC
CCTCCTGAATCCGAAGCAGGATCTGAAGAAGCTGAAGAAAACAGGACAGTGAGAAACCCTTTTAGAAC
TA

ACGCGTACGCGGCCGCTCGAGCAGAAACTCATCTCAGAAGAGGATCTGGCAGCAAATGATATCCTGGATT
ACAAGGATGACGACGATAAGGTTTAA



[View online »](#)

Protein Sequence: >RC203285 protein sequence
 Red=Cloning site Green=Tags(s)

MNHLPEDMENALTGSQSSHASLRNIHSINPTQLMARIESYEGREKKGISDVRRTFCLFVTFDLLFVTL
 IIELNVNGGIENTLEKEVMQYDYSSYFDIFLLAVFRFKVLILAYAVCRLRHWWAIALTTAVTSAFLLAK
 VILSKLFSQAGFYVLP IISFILAWIETWFLDFKVL PQEAEENRLLIVQDASERAALIPGGLSDGQFY
 PPESEAGSEEAEEKQDSEKPLLEL

TRTRPLEQKLISEEDLAANDILDYKDDDDKV

Chromatograms: https://cdn.origene.com/chromatograms/mk6416_b06.zip

Restriction Sites: SgfI-MluI

Cloning Scheme:



ACCN: NM_032016

ORF Size: 702 bp

OTI Disclaimer: The molecular sequence of this clone aligns with the gene accession number as a point of reference only. However, individual transcript sequences of the same gene can differ through naturally occurring variations (e.g. polymorphisms), each with its own valid existence. This clone is substantially in agreement with the reference, but a complete review of all prevailing variants is recommended prior to use. [More info](#)

OTI Annotation: This clone was engineered to express the complete ORF with an expression tag. Expression varies depending on the nature of the gene.

Components: The ORF clone is ion-exchange column purified and shipped in a 2D barcoded Matrix tube containing 10ug of transfection-ready, dried plasmid DNA (reconstitute with 100 ul of water).

Reconstitution Method:

1. Centrifuge at 5,000xg for 5min.
2. Carefully open the tube and add 100ul of sterile water to dissolve the DNA.
3. Close the tube and incubate for 10 minutes at room temperature.
4. Briefly vortex the tube and then do a quick spin (less than 5000xg) to concentrate the liquid at the bottom.
5. Store the suspended plasmid at -20°C. The DNA is stable for at least one year from date of shipping when stored at -20°C.

Note: Plasmids are not sterile. For experiments where strict sterility is required, filtration with 0.22um filter is required.

RefSeq: [NM_032016.4](#)

RefSeq Size: 1755 bp

RefSeq ORF: 705 bp

Locus ID: 83930

UniProt ID: [O95772](#)

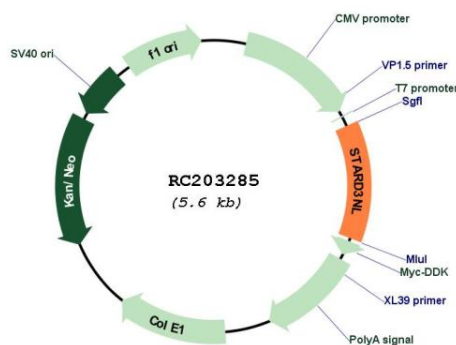
Cytogenetics: 7p14.1

Protein Families: Transmembrane

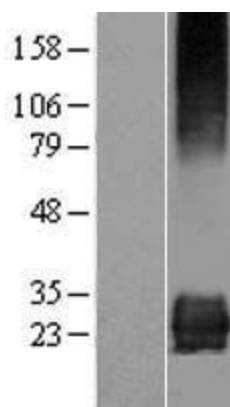
MW: 26.7 kDa

Gene Summary: This gene encodes a late-endosomal protein that contains a conserved MENTAL (MLN64 N-terminal) domain. The encoded protein binds cholesterol molecules and may play a role in endosomal cholesterol transport through interactions with metastatic lymph node protein 64 (MLN64). [provided by RefSeq, Sep 2011]

Product images:



Circular map for RC203285



Western blot validation of overexpression lysate (Cat# [LY410394]) using anti-DDK antibody (Cat# [TA50011-100]). Left: Cell lysates from untransfected HEK293T cells; Right: Cell lysates from HEK293T cells transfected with RC203285 using transfection reagent MegaTran 2.0 (Cat# [TT210002]).