

Product datasheet for RC203281L4

C20orf114 (BPIFB1) (NM_033197) Human Tagged Lenti ORF Clone

Product data:

Product Type:	Expression Plasmids
Product Name:	C20orf114 (BPIFB1) (NM_033197) Human Tagged Lenti ORF Clone
Tag:	mGFP
Symbol:	C20orf114
Synonyms:	C20orf114; LPLUNC1
Mammalian Cell Selection:	Puromycin
Vector:	pLenti-C-mGFP-P2A-Puro (PS100093)
E. coli Selection:	Chloramphenicol (34 ug/mL)
ORF Nucleotide Sequence:	The ORF insert of this clone is exactly the same as(RC203281).
Restriction Sites:	SgfI-MluI
Cloning Scheme:	

Cloning sites used for ORF Shuttling:



* The last codon before the Stop codon of the ORF.

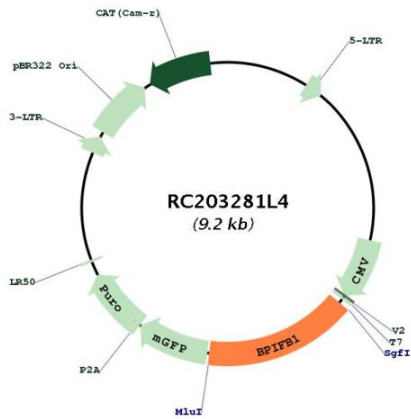
ACCN:	NM_033197
ORF Size:	1452 bp



[View online »](#)

OTI Disclaimer:	The molecular sequence of this clone aligns with the gene accession number as a point of reference only. However, individual transcript sequences of the same gene can differ through naturally occurring variations (e.g. polymorphisms), each with its own valid existence. This clone is substantially in agreement with the reference, but a complete review of all prevailing variants is recommended prior to use. More info
OTI Annotation:	This clone was engineered to express the complete ORF with an expression tag. Expression varies depending on the nature of the gene.
Components:	The ORF clone is ion-exchange column purified and shipped in a 2D barcoded Matrix tube containing 10ug of transfection-ready, dried plasmid DNA (reconstitute with 100 ul of water).
Reconstitution Method:	<ol style="list-style-type: none">1. Centrifuge at 5,000xg for 5min.2. Carefully open the tube and add 100ul of sterile water to dissolve the DNA.3. Close the tube and incubate for 10 minutes at room temperature.4. Briefly vortex the tube and then do a quick spin (less than 5000xg) to concentrate the liquid at the bottom.5. Store the suspended plasmid at -20°C. The DNA is stable for at least one year from date of shipping when stored at -20°C.
RefSeq:	NM_033197.2
RefSeq Size:	1734 bp
RefSeq ORF:	1455 bp
Locus ID:	92747
UniProt ID:	Q8TDL5
Cytogenetics:	20q11.21
Protein Families:	Druggable Genome, Secreted Protein, Transmembrane
MW:	52.4 kDa
Gene Summary:	The protein encoded by this gene may be involved in the innate immune response to bacterial exposure in the mouth, nasal cavities, and lungs. The encoded protein is secreted and is a member of the BPI/LBP/PLUNC protein superfamily. This gene is found with other members of the superfamily in a cluster on chromosome 20. [provided by RefSeq, Jul 2008]

Product images:



Circular map for RC203281L4