

## Product datasheet for **RC203281**

### **C20orf114 (BPIFB1) (NM\_033197) Human Tagged ORF Clone**

#### **Product data:**

Product Type:	Expression Plasmids
Product Name:	C20orf114 (BPIFB1) (NM_033197) Human Tagged ORF Clone
Tag:	Myc-DDK
Symbol:	C20orf114
Synonyms:	C20orf114; LPLUNC1
Mammalian Cell Selection:	Neomycin
Vector:	pCMV6-Entry (PS100001)
E. coli Selection:	Kanamycin (25 ug/mL)



[View online »](#)

**ORF Nucleotide Sequence:**

>RC203281 representing NM\_033197  
 Red=Cloning site Blue=ORF Green=Tags(s)

TTTTGTAATACGACTCACTATAGGGCGGCCGGAATTCGTCGACTGGATCCGGTACCGAGGAGATCTGCC  
 GCC**GCGATCGCC**

ATGGCCGGCCCGTGGACCTTACCCCTTCTGTGGTTTGTGGCAGCCACCTTGATCCAAGCCACCCTCA  
 GTCCACTGCAGTTCTCATCCTCGGCCAAAAGTCATCAAAGAAAAGCTGACACAGGAGCTGAAGGACCA  
 CAACGCCACCAGCATCCTGCAGCAGCTGCCGCTGCTCAGTGCCATGCGGGAAAAGCCAGCCGGAGGCATC  
 CCTGTGCTGGGCAGCCTGGTGAACACCGTCTGAAGCACATCATCTGGCTGAAGGTCATCACAGCTAACA  
 TCCTCCAGCTGCAGGTGAAGCCCTCGGCCAATGACCAGGAGCTGTAGTCAAGATCCCCCTGGACATGGT  
 GGCTGGATTCAACACGCCCTGGTCAAGACCATCGTGGAGTTCACATGACGACTGAGGCCCAAGCCACC  
 ATCCGCATGGACACCAGTGAAGTGGCCCCACCCGCTGGTCTCAGTGACTGTGCCACCAGCCATGGGA  
 GCCTGCGCATCCAACCTGTCATAAGCTCTCCTCCTGGTGAACGCCTTAGCTAAGCAGGTCATGAACCT  
 CCTAGTGCCATCCCTGCCAATCTAGTAAAAACCAGCTGTGTCCCGTATCGAGGCTTCTTCAATGGC  
 ATGTATGCAGACCTCCTGCAGCTGGTGAAGGTGCCATTTCCCTCAGCATTGACCGTCTGGAGTTTGACC  
 TTCTGTATCCTGCCATCAAGGGTGACACCATTAGCTCTACCTGGGGCCAAGTTGTTGGACTCACAGGG  
 AAAGGTGACCAAGTGGTTCAATAACTCTGCAGCTTCCCTGACAATGCCACCCTGGACAACATCCCGTTC  
 AGCCTCATCGTGAGTCAGGACGTGGTGAAGCTGCAGTGGCTGCTGTGCTCTCTCCAGAAGAATTCATGG  
 TCCTGTTGGACTCTGTGCTTCTGAGAGTGCCATCGGCTGAAGTCAAGCATCGGCTGATCAATGAAAA  
 GGCTGCAGATAAGCTGGGATCTACCCAGATCGTGAAGTCCCTAAGTCAAGCATCGGCTGATCAATGAAAA  
 GACCAAGGCCATGCCAAGTGGCCCAACTGATCGTGTGGAAGTGTTCCTCCAGTGAAGCCCTCCGCC  
 CTTTGTTCACCCCTGGGCATCGAAGCCAGCTCGGAAGCTCAGTTTTACACCAAAGTGAACCACTTACT  
 CAACTTGAATAACATCAGCTCTGATCGGATCCAGCTGATGAACTCTGGGATTGGCTGGTTCCAACCTGAT  
 GTTCTGAAAAACATCACTACTGAGATCATCCACTCCATCCTGCTGCCGAACCAGAATGGCAAATTAAGAT  
 CTGGGGTCCCAGTGTATTGGTGAAGGCCTTGGGATTCGAGGCAGCTGAGTCTCACTGACCAAGGATGC  
 CCTTGTGCTTACTCCAGCCTCCTGTGGAACCAGCTCTCCTGTCTCCAG

**ACGCGT**ACGCGGCCGCTCGAGCAGAAACTCATCTCAGAAGAGGATCTGGCAGCAAATGATATCCTGGATT  
 ACAAGGATGACGACGATAAGGTTTAA

**Protein Sequence:**

>RC203281 representing NM\_033197  
 Red=Cloning site Green=Tags(s)

MAGPWFTHLLCGLLAATLIQATLSPTAVLILGPKVIKEKLTQELKDHNATSILQQLPLLAMREKPAAGI  
 PVLGSLVNTVLKHIIWLKVITANILQLQVKPSANDQELLVKIPLDMVAGFNTPLVKTIIVEFHMTTEAQAT  
 IRMDSASGPTRLVLSDCATSHGSLRIQLLHKL SFLVNALAKQVMNLLVPSLPNLVKNQLCPVIEASFNG  
 MYADLLQLVKVPIISLIDRLEFDLLYPAIKGDTIQLYLGAKLLDSQGKVTKWFNNSAASLTMPITLDNIPF  
 SLIVSQDVVKAAVAVALSPEEFMVLDSVLPESAHRLKSSIGLINEKAADKLGSTQIVKILTQDTPEFFI  
 DQGHAKVAQLIVLEVFPSEALRPLFTLIEASSEAQFYTKGDQLILNLNLISSDRIQLMNSGIGWFQPD  
 VLKNIITEIIHSILLPNQNGKLRSQVPSLVKALGFEEAESSLTKDALVLTASLWKPSSPVSQ

**TR**TRPLEQK**L**I**SEEDLA**ND**ILDYK**DDDD**KV**

**Restriction Sites:**

Sgfl-MluI

**Cloning Scheme:**


**ACCN:** NM\_033197

**ORF Size:** 1452 bp

**OTI Disclaimer:** The molecular sequence of this clone aligns with the gene accession number as a point of reference only. However, individual transcript sequences of the same gene can differ through naturally occurring variations (e.g. polymorphisms), each with its own valid existence. This clone is substantially in agreement with the reference, but a complete review of all prevailing variants is recommended prior to use. [More info](#)

**OTI Annotation:** This clone was engineered to express the complete ORF with an expression tag. Expression varies depending on the nature of the gene.

**Components:** The ORF clone is ion-exchange column purified and shipped in a 2D barcoded Matrix tube containing 10ug of transfection-ready, dried plasmid DNA (reconstitute with 100 ul of water).

- Reconstitution Method:**
1. Centrifuge at 5,000xg for 5min.
  2. Carefully open the tube and add 100ul of sterile water to dissolve the DNA.
  3. Close the tube and incubate for 10 minutes at room temperature.
  4. Briefly vortex the tube and then do a quick spin (less than 5000xg) to concentrate the liquid at the bottom.
  5. Store the suspended plasmid at -20°C. The DNA is stable for at least one year from date of shipping when stored at -20°C.

**Note:** Plasmids are not sterile. For experiments where strict sterility is required, filtration with 0.22um filter is required.

**RefSeq:** [NM\\_033197.3](#)

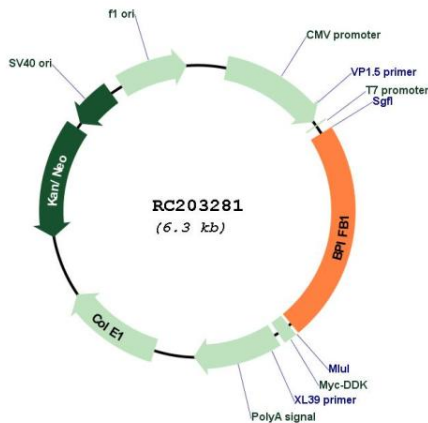
**RefSeq Size:** 1734 bp

**RefSeq ORF:** 1455 bp

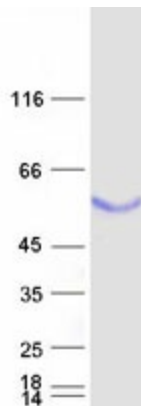
**Locus ID:** 92747

**UniProt ID:** [Q8TDL5](#)  
**Cytogenetics:** 20q11.21  
**Protein Families:** Druggable Genome, Secreted Protein, Transmembrane  
**MW:** 52.4 kDa  
**Gene Summary:** The protein encoded by this gene may be involved in the innate immune response to bacterial exposure in the mouth, nasal cavities, and lungs. The encoded protein is secreted and is a member of the BPI/LBP/PLUNC protein superfamily. This gene is found with other members of the superfamily in a cluster on chromosome 20. [provided by RefSeq, Jul 2008]

### Product images:



Circular map for RC203281



Coomassie blue staining of purified BPIFB1 protein (Cat# [TP303281]). The protein was produced from HEK293T cells transfected with BPIFB1 cDNA clone (Cat# RC203281) using MegaTran 2.0 (Cat# [TT210002]).