

## Product datasheet for **RC203277**

### **SMPX (NM\_014332) Human Tagged ORF Clone**

#### Product data:

**Product Type:** Expression Plasmids  
**Product Name:** SMPX (NM\_014332) Human Tagged ORF Clone  
**Tag:** Myc-DDK  
**Symbol:** SMPX  
**Synonyms:** Chisel; Csl; DFN6; DFNX4  
**Mammalian Cell Selection:** Neomycin  
**Vector:** pCMV6-Entry (PS100001)  
**E. coli Selection:** Kanamycin (25 ug/mL)  
**ORF Nucleotide Sequence:** >RC203277 ORF sequence  
**Red=Cloning site Blue=ORF Green=Tags(s)**

TTTTGTAATACGACTCACTATAGGGCGGCCGGAATTCGTCGACTGGATCCGGTACCGAGGAGATCTGCC  
GCC**CGATCGCC**

ATGAATATGTCGAAACAGCCAGTTTCCAATGTTAGAGCCATCCAGGCAAATATCAATATTTCCAATGGGAG  
CCTTTTCGGCCAGGAGCAGGTCAACCCCCAGAAGAAAAGAATGTACTCCTGAAGTGGAGGAGGGTGTTC  
TCCCACCTCGGATGAGGAGAAGAAGCAATTCCAGGAGCGAAGAACTTCCAGGACCTGCAGTCAATCTA  
TCGAAATCCAGAATATTTAAAGTGAATAAAATATGTCCCAAAGCTGAACAG

**ACGCGT**ACGCGGCCGCTCGAGCAGAACTCATCTCAGAAGAGGATCTGGCAGCAAATGATATCCTGGATT  
ACAAGGATGACGACGATAAGGTTTAA

**Protein Sequence:** >RC203277 protein sequence  
**Red=Cloning site Green=Tags(s)**  
MNMSKQPVSNVRAIQANINIPMGAFRPGAGQPPRRKECTPEVEEGVPPTSDEEKKPIGAKKLPGPAVNL  
SEIQNIKSELKYVPKAEQ

**TRTRPLEQKLISEEDLAANDILDYKDDDDKV**

**Chromatograms:** [https://cdn.origene.com/chromatograms/mk6416\\_c11.zip](https://cdn.origene.com/chromatograms/mk6416_c11.zip)

**Restriction Sites:** Sgfl-MluI



[View online »](#)

**Cloning Scheme:**


**ACCN:** NM\_014332

**ORF Size:** 264 bp

**OTI Disclaimer:** The molecular sequence of this clone aligns with the gene accession number as a point of reference only. However, individual transcript sequences of the same gene can differ through naturally occurring variations (e.g. polymorphisms), each with its own valid existence. This clone is substantially in agreement with the reference, but a complete review of all prevailing variants is recommended prior to use. [More info](#)

**OTI Annotation:** This clone was engineered to express the complete ORF with an expression tag. Expression varies depending on the nature of the gene.

**Components:** The ORF clone is ion-exchange column purified and shipped in a 2D barcoded Matrix tube containing 10ug of transfection-ready, dried plasmid DNA (reconstitute with 100 ul of water).

**Reconstitution Method:**

1. Centrifuge at 5,000xg for 5min.
2. Carefully open the tube and add 100ul of sterile water to dissolve the DNA.
3. Close the tube and incubate for 10 minutes at room temperature.
4. Briefly vortex the tube and then do a quick spin (less than 5000xg) to concentrate the liquid at the bottom.
5. Store the suspended plasmid at -20°C. The DNA is stable for at least one year from date of shipping when stored at -20°C.

**Note:** Plasmids are not sterile. For experiments where strict sterility is required, filtration with 0.22um filter is required.

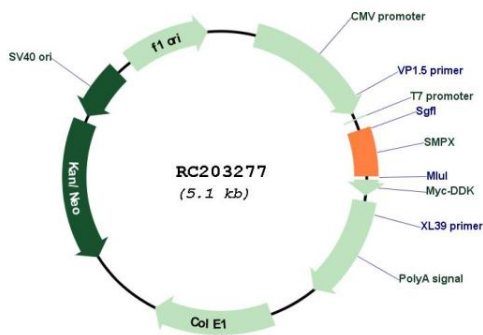
**RefSeq:** [NM\\_014332.3](#)

**RefSeq Size:** 951 bp

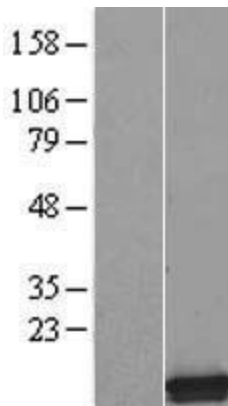
RefSeq ORF: 267 bp  
 Locus ID: 23676  
 UniProt ID: [Q9UHP9](#)  
 Cytogenetics: Xp22.12  
 MW: 9.6 kDa

**Gene Summary:** This gene encodes a small protein that has no known functional domains. Mutations in this gene are a cause of X-linked deafness-4, and the encoded protein may play a role in the maintenance of inner ear cells subjected to mechanical stress. Alternatively spliced transcript variants have been observed for this gene. [provided by RefSeq, Dec 2011]

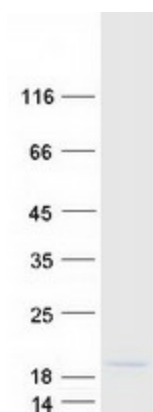
**Product images:**



Circular map for RC203277



Western blot validation of overexpression lysate (Cat# [LY415310]) using anti-DDK antibody (Cat# [TA50011-100]). Left: Cell lysates from untransfected HEK293T cells; Right: Cell lysates from HEK293T cells transfected with RC203277 using transfection reagent MegaTran 2.0 (Cat# [TT210002]).



Coomassie blue staining of purified SMPX protein (Cat# [TP303277]). The protein was produced from HEK293T cells transfected with SMPX cDNA clone (Cat# RC203277) using MegaTran 2.0 (Cat# [TT210002]).