

Product datasheet for **RC203274**

TUBA6 (TUBA1C) (NM_032704) Human Tagged ORF Clone

Product data:

Product Type:	Expression Plasmids
Product Name:	TUBA6 (TUBA1C) (NM_032704) Human Tagged ORF Clone
Tag:	Myc-DDK
Symbol:	TUBA1C
Synonyms:	bcm948; TUBA6
Vector:	pCMV6-Entry (PS100001)
E. coli Selection:	Kanamycin (25 ug/mL)
Cell Selection:	Neomycin



[View online »](#)

ORF Nucleotide
Sequence:

>RC203274 ORF sequence
Red=Cloning site Blue=ORF Green=Tags(s)

TTTTGTAATACGACTCACTATAGGGCGGCCGGAATTCGTCGACTGGATCCGGTACCGAGGAGATCTGCC
GCCGCGATCGCC

ATGCGTGAGTGCATCTCCATCCACGTTGGCCAGGCTGGTTCAGATTGGCAATGCCTGCTGGGAGCTCT
ACTGCCTGGAACACGGCATCCAGCCGATGGCCAGATGCCAAGTGACAAGACCATTGGGGGAGGAGATGA
TTCCTTCAACACCTTCTTCAGTGAACGGGTGCTGGCAAGCATGTGCCCGGGCAGTGTTGTAGACTTG
GAACCCACAGTCATTGATGAAGTTCGCACTGGCACTTACCGCCAGCTCTCCACCCTGAGCAACTCATCA
CAGGCAAGGAAGATGCTGCCAATAACTATGCCGAGGGCACTACACCATTGGCAAGGAGATCATTGACCT
CGTGTGGACCGAATTCGCAAGCTGGCTGACCAGTGCACCGGTCTTCAGGGCTTCTTGGTTTTCCACAGC
TTTGGTGGGGAACTGGTCTGGGTTACCTCGCTGCTCATGGAACGTCTCTCAGTTGATTATGGCAAGA
AGTCCAAGCTGGAGTTCTCCATTTACCCGGCGCCCAAGTTCACAGCTGTAGTTGAGCCCTACAACCT
CATCCTCACCACCACACCACCCTGGAGCACTCTGATTGTGCCTTCATGGTAGACAATGAGGCCATCTAT
GACATCTGTCGTAGAAACCTCGATATCGAGCGCCCAACCTACACTAACCTTAACCGCCTTATTAGCCAGA
TTGTGTCCTCCATCACTGCTTCCCTGAGATTTGATGGAGCCCTGAATGTTGACCTGACAGAATCCAGAC
CAACCTGGTGCCCTACCCCGCATCCACTTCCCTCTGGCCACATATGCCCTGTCATCTCTGCTGAGAAA
GCCTACCATGAACAGCTTACTGTAGCAGAGATCAACATGCTTGCTTTGAGCCAGCCAACCATGAGTGA
AATGTGACCCCTCGCCATGGTAAATACATGGCTTGTGCTGTTATACCGTGGTACGTGGTTCCTCAAGA
TGTCATGCTGCCATTGCCACCATCAAACCAAGCGTACCATCCAGTTTGTGGATTGGTGGCCCACTGGC
TTCAAGTTGGCATTAAATACCAGCCTCCACTGTGGTGCCTGGCGGAGACCTGGCCAAGGTACAGAGAG
CTGTGTGCATGCTGAGCAATACCACAGCTGTTGCCGAGGCTGGGCTCGCCTGGACCACAAGTTTGACCT
GATGTATGCCAAGCGTGCCTTTGTTCACTGGTACGTGGGTGAGGGGATGGAGGAAGGCGAGTTTTTCAGAG
GCCCGTGAAGGACATGGCTGCCCTTGAGAAGGATTATGAGGAGGTTGGAGCAGATAGTCTGACGGAGAGG
ATGAGGGTGAAGAGTAT

ACGCGTACGCGGCCGCTCGAGCAGAACTCATCTCAGAAGAGGATCTGGCAGCAAATGATATCCTGGATT
ACAAGGATGACGACGATAAGGTTTAA

Protein Sequence:

>RC203274 protein sequence
Red=Cloning site Green=Tags(s)

MRECISIHVQGAVQIGNACWELYCLEHGIQPDGQMPQSDKTIGGGDSFNFTFFSETGAGKHVPRAVFVDL
EPTVIDEVRTGTYRQLFHPEQLITGKEDAANNYARGHYTIGKEIIDLVLDRIKRLADQCTGLQGFLVFHS
FGGGTSGSFTSLLMERLSVDYGGKSKLEFSIYPAPQVSTAVVEPYNSILTHTTLEHSDCAFMDNEAIY
DICRRNLDIERPTYTNLNRLISQIVSSITASLRFDGALNVDLTFQTNLVPYPRIFPLATYAPVISA EK
AYHEQLTVAEITNACFEPANQMVKCDPRHGKYMCCLLYRGDVVPKDVNAAIATIKTKRTIQFVDWCPTG
FKVGINYQPPTVVPGGDLAKVQRAVCMLSNTTAVAEAWARLDHKFDL MYAKRAVHVHVVYVGEEMEEGEFSE
AREDMAALEKDYEVEVGADSADGEDEGE EY

TRTRPLEQKLI SEEDLAANDILDYKDDDDKV

Chromatograms:

https://cdn.origene.com/chromatograms/mk6417_c05.zip

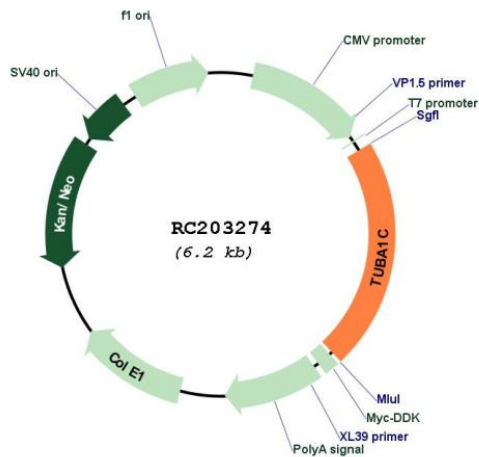
Restriction Sites:

Sgfl-Mlul

Cloning Scheme:



Plasmid Map:



ACCN: NM_032704

ORF Size: 1347 bp

OTI Disclaimer: The molecular sequence of this clone aligns with the gene accession number as a point of reference only. However, individual transcript sequences of the same gene can differ through naturally occurring variations (e.g. polymorphisms), each with its own valid existence. This clone is substantially in agreement with the reference, but a complete review of all prevailing variants is recommended prior to use. [More info](#)

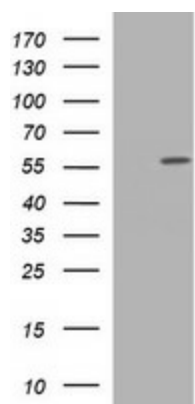
OTI Annotation: This clone was engineered to express the complete ORF with an expression tag. Expression varies depending on the nature of the gene.

RefSeq: [NM_032704.3](#)

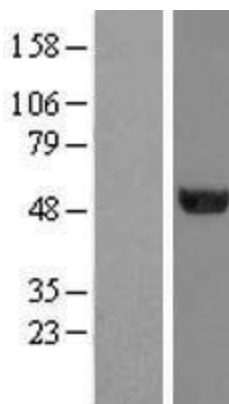
RefSeq Size: 1581 bp

RefSeq ORF:	1350 bp
Locus ID:	84790
UniProt ID:	Q9BQE3
Domains:	tubulin
Protein Pathways:	Gap junction, Pathogenic Escherichia coli infection
MW:	49.9 kDa
Gene Summary:	Tubulin is the major constituent of microtubules. It binds two moles of GTP, one at an exchangeable site on the beta chain and one at a non-exchangeable site on the alpha chain. [UniProtKB/Swiss-Prot Function]

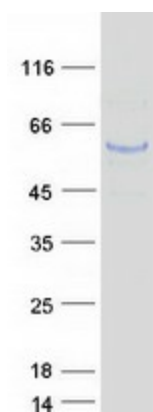
Product images:



HEK293T cells were transfected with the pCMV6-ENTRY control (Cat# [PS100001], Left lane) or pCMV6-ENTRY TUBA1C (Cat# RC203274, Right lane) cDNA for 48 hrs and lysed. Equivalent amounts of cell lysates (5 ug per lane) were separated by SDS-PAGE and immunoblotted with anti-TUBA1C (Cat# [TA506685]). Positive lysates [LY409974] (100ug) and [LC409974] (20ug) can be purchased separately from OriGene.



Western blot validation of overexpression lysate (Cat# [LY409974]) using anti-DDK antibody (Cat# [TA50011-100]). Left: Cell lysates from untransfected HEK293T cells; Right: Cell lysates from HEK293T cells transfected with RC203274 using transfection reagent MegaTran 2.0 (Cat# [TT210002]).



Coomassie blue staining of purified TUBA1C protein (Cat# [TP303274]). The protein was produced from HEK293T cells transfected with TUBA1C cDNA clone (Cat# RC203274) using MegaTran 2.0 (Cat# [TT210002]).