

Product datasheet for **RC203273L4V**

MAD2 (MAD2L1) (NM_002358) Human Tagged ORF Clone Lentiviral Particle

Product data:

Product Type:	Lentiviral Particles
Product Name:	MAD2 (MAD2L1) (NM_002358) Human Tagged ORF Clone Lentiviral Particle
Symbol:	MAD2
Synonyms:	HSMAD2; MAD2
Mammalian Cell Selection:	Puromycin
Vector:	pLenti-C-mGFP-P2A-Puro (PS100093)
Tag:	mGFP
ACCN:	NM_002358
ORF Size:	615 bp
ORF Nucleotide Sequence:	The ORF insert of this clone is exactly the same as(RC203273).
OTI Disclaimer:	The molecular sequence of this clone aligns with the gene accession number as a point of reference only. However, individual transcript sequences of the same gene can differ through naturally occurring variations (e.g. polymorphisms), each with its own valid existence. This clone is substantially in agreement with the reference, but a complete review of all prevailing variants is recommended prior to use. More info
OTI Annotation:	This clone was engineered to express the complete ORF with an expression tag. Expression varies depending on the nature of the gene.
RefSeq:	NM_002358.2
RefSeq Size:	1453 bp
RefSeq ORF:	618 bp
Locus ID:	4085
UniProt ID:	Q13257
Cytogenetics:	4q27
Protein Families:	Druggable Genome
Protein Pathways:	Cell cycle, Oocyte meiosis, Progesterone-mediated oocyte maturation

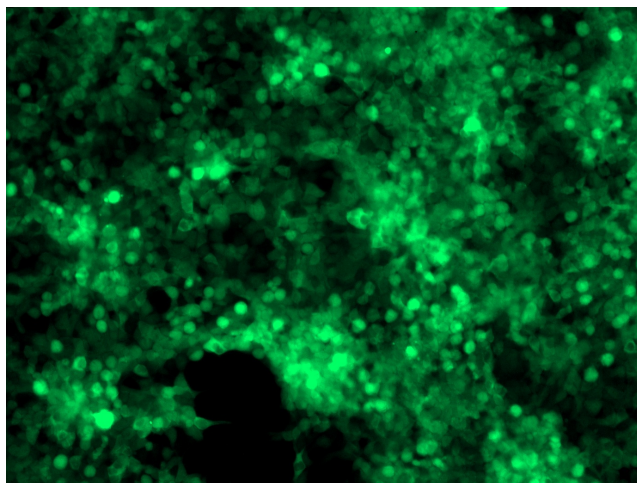


[View online »](#)

MW: 23.5 kDa

Gene Summary: MAD2L1 is a component of the mitotic spindle assembly checkpoint that prevents the onset of anaphase until all chromosomes are properly aligned at the metaphase plate. MAD2L1 is related to the MAD2L2 gene located on chromosome 1. A MAD2 pseudogene has been mapped to chromosome 14. [provided by RefSeq, Jul 2008]

Product images:



[RC203273L4] was used to prepare Lentiviral particles using [TR30037] packaging kit. HEK293T cells were transduced with RC203273L4V particle to overexpress human MAD2L1-mGFP fusion protein.