

Product datasheet for RC203273

MAD2 (MAD2L1) (NM_002358) Human Tagged ORF Clone

Product data:

Product Type: Expression Plasmids
Product Name: MAD2 (MAD2L1) (NM_002358) Human Tagged ORF Clone
Tag: Myc-DDK
Symbol: MAD2
Synonyms: HSMAD2; MAD2
Mammalian Cell Selection: Neomycin
Vector: pCMV6-Entry (PS100001)
E. coli Selection: Kanamycin (25 ug/mL)
ORF Nucleotide Sequence: >RC203273 ORF sequence
 Red=Cloning site Blue=ORF Green=Tags(s)

TTTTGTAATACGACTCACTATAGGGCGGCCGGAATTCGTCGACTGGATCCGGTACCGAGGAGATCTGCC
 GCC**CGATCGCC**

ATGGCGCTGCAGCTCTCCGGGAGCAGGGAATCACCTGCGCGGGAGCGCCGAAATCGTGGCCGAGTTCT
 TCTCATTCCGGCATCAACAGCATTTTATATCAGCGTGCCATATATCCATCTGAAACCTTTACTCGAGTGCA
 GAAATACGGACTCACCTTGCTTGAACACTACTGATCTTGAGCTCATAAAATACCTAAATAATGTGGTGAA
 CAACTGAAAGATTGGTTATACAAGTGTTGAGTTCAGAACTGGTGTAGTTATCTCAAATATTGAAAGTG
 TGAGGTCTGGAAAGATGGCAGTTTGATATTGAGTGTGACAAGACTGCAAAGATGACAGTGCACCCAG
 AGAAAAGTCTCAGAAAGCTATCCAGGATGAAATCCGTTTCAGTGATCAGACAGATCACAGTACGGTGACA
 TTTCTGCCACTGTTGGAAGTTTCTTGTTCAATTTGATCTGCTGATTTATACAGACAAAGATTTGGTTGATC
 CTGAAAAATGGGAAGAGTCGGGACCACAGTTTATTACCAATTCTGAGGAAGTCCGCCTTCGTTCAATTTAC
 TACTACAATCCACAAAGTAAATAGCATGGTGGCCTACAAAATTCCTGTCAATGAC

ACGCGTACGCGGCCGCTCGAGCAGAACTCATCTCAGAAGAGGATCTGGCAGCAATGATATCCTGGATT
 ACAAGGATGACGACGATAAGGTTTAA

Protein Sequence: >RC203273 protein sequence
 Red=Cloning site Green=Tags(s)

MALQLSREQGITLRGSAEIVAEFFSFGINSILYQRGIYPSETFTRVQKYGLTLLVTTDLELIKYLNNVVE
 QLKDWLYKCSVQKLVVVISNIESGEVLERWQFDIECDKTAKDSDAPREKSQKAIQDEIRSVIRQITATVT
 FLPLLEVSCSFDLLIYTDKDLVPEKWEESGPQFITNSEEVRLRSFTTTIHKVNSMVAYKIPVND

TRTRPLEQKLISEEDLAANDILDYKDDDDKV



[View online »](#)

Chromatograms: https://cdn.origene.com/chromatograms/mk6051_c07.zip

Restriction Sites: SgfI-MluI

Cloning Scheme:



ACCN: NM_002358

ORF Size: 615 bp

OTI Disclaimer: The molecular sequence of this clone aligns with the gene accession number as a point of reference only. However, individual transcript sequences of the same gene can differ through naturally occurring variations (e.g. polymorphisms), each with its own valid existence. This clone is substantially in agreement with the reference, but a complete review of all prevailing variants is recommended prior to use. [More info](#)

OTI Annotation: This clone was engineered to express the complete ORF with an expression tag. Expression varies depending on the nature of the gene.

Components: The ORF clone is ion-exchange column purified and shipped in a 2D barcoded Matrix tube containing 10ug of transfection-ready, dried plasmid DNA (reconstitute with 100 ul of water).

Reconstitution Method:

1. Centrifuge at 5,000xg for 5min.
2. Carefully open the tube and add 100ul of sterile water to dissolve the DNA.
3. Close the tube and incubate for 10 minutes at room temperature.
4. Briefly vortex the tube and then do a quick spin (less than 5000xg) to concentrate the liquid at the bottom.
5. Store the suspended plasmid at -20°C. The DNA is stable for at least one year from date of shipping when stored at -20°C.

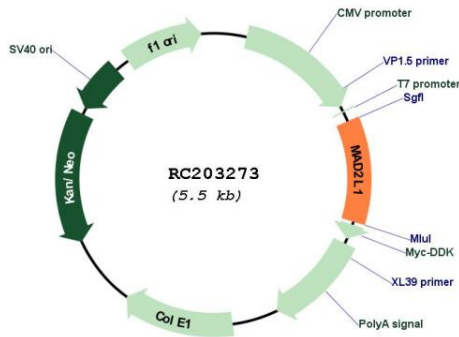
Note: Plasmids are not sterile. For experiments where strict sterility is required, filtration with 0.22um filter is required.

RefSeq: [NM_002358.4](#)

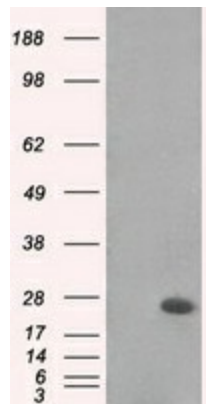
RefSeq Size: 1453 bp

RefSeq ORF: 618 bp
Locus ID: 4085
UniProt ID: [Q13257](#)
Cytogenetics: 4q27
Protein Families: Druggable Genome
Protein Pathways: Cell cycle, Oocyte meiosis, Progesterone-mediated oocyte maturation
MW: 23.5 kDa
Gene Summary: MAD2L1 is a component of the mitotic spindle assembly checkpoint that prevents the onset of anaphase until all chromosomes are properly aligned at the metaphase plate. MAD2L1 is related to the MAD2L2 gene located on chromosome 1. A MAD2 pseudogene has been mapped to chromosome 14. [provided by RefSeq, Jul 2008]

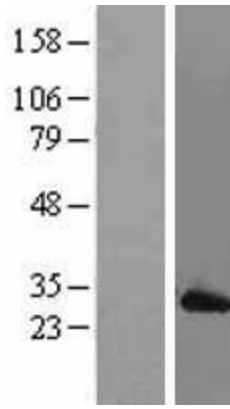
Product images:



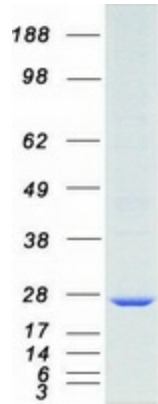
Circular map for RC203273



HEK293T cells were transfected with the pCMV6-ENTRY control (Cat# [PS100001], Left lane) or pCMV6-ENTRY MAD2L1 (Cat# RC203273, Right lane) cDNA for 48 hrs and lysed. Equivalent amounts of cell lysates (5 ug per lane) were separated by SDS-PAGE and immunoblotted with anti-MAD2L1 (Cat# [TA500617]). Positive lysates [LY400849] (100ug) and [LC400849] (20ug) can be purchased separately from OriGene.



Western blot validation of overexpression lysate (Cat# [LY400849]) using anti-DDK antibody (Cat# [TA50011-100]). Left: Cell lysates from untransfected HEK293T cells; Right: Cell lysates from HEK293T cells transfected with RC203273 using transfection reagent MegaTran 2.0 (Cat# [TT210002]).



Coomassie blue staining of purified MAD2L1 protein (Cat# [TP303273]). The protein was produced from HEK293T cells transfected with MAD2L1 cDNA clone (Cat# RC203273) using MegaTran 2.0 (Cat# [TT210002]).