

Product datasheet for **RC203265**

DAP13 (NDUFA12) (NM_018838) Human Tagged ORF Clone

Product data:

Product Type: Expression Plasmids
Product Name: DAP13 (NDUFA12) (NM_018838) Human Tagged ORF Clone
Tag: Myc-DDK
Symbol: DAP13
Synonyms: B17.2; DAP13; MC1DN23
Mammalian Cell Selection: Neomycin
Vector: pCMV6-Entry (PS100001)
E. coli Selection: Kanamycin (25 ug/mL)
ORF Nucleotide Sequence: >RC203265 ORF sequence
Red=Cloning site Blue=ORF Green=Tags(s)

TTTTGTAATACGACTCACTATAGGGCGGCCGGAATTCGTCGACTGGATCCGGTACCGAGGAGATCTGCC
GCC**CGGATCGCC**

ATGGAGTTAGTGCAGGTCTGAAACGCGGGCTGCAGCAGATCACCGCCACGGCGGTCTCCGAGGCTATC
TACGGGTTTTTTTCAGGACAAATGATGCGAAGGTTGGTACATTAGTGGGGGAAGACAAATATGGAACAA
ATACTATGAAGACAACAAGCAATTTTTGGCCGTCACCGATGGGTTGTATATACTACTGAAATGAATGCC
AAAAACACATTCTGGGATGTGGATGGAAGCATGGTGCCTCCTGAATGGCATCGTTGGCTTCACAGTATGA
CTGATGATCCTCCAACAACAAAACCACTTGCTGCTCGTAAATTCATTTGGACGAACCATAAATTCACCGT
GACTGGCACCCCAACAACAAATATGTACCTTATTCTACCACTAGAAAGAAGATTCAGGAGTGGATCCCACCT
TCAACACCTTACAAG

ACGCGTACGCGGCCGCTCGAGCAGAACTCATCTCAGAAGAGGATCTGGCAGCAAATGATATCCTGGATT
ACAAGGATGACGACGATAAGGTTTAA

Protein Sequence: >RC203265 protein sequence
Red=Cloning site Green=Tags(s)
MELVQVLKRGLQQITGHGGLRGYLRVFFRTNDAKVGTLVGEDKYGNKYEDNKQFFGRHRWVYTTMNG
KNTFWDVDGSMVPEWHRWLHSMDDPPPTTKPLAARKFIWTHKFNVTGTPEQYVPYSTTRKKIQEWIPP
STPYK

TRTRPLEQKLISEEDLAANDILDYKDDDDKV

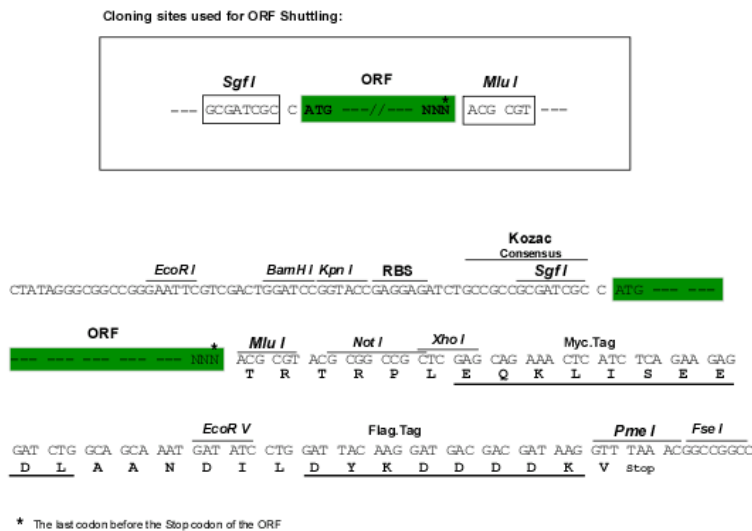
Chromatograms: https://cdn.origene.com/chromatograms/mk6050_d01.zip



[View online »](#)

Restriction Sites: SgfI-MluI

Cloning Scheme:



ACCN: NM_018838

ORF Size: 435 bp

OTI Disclaimer: The molecular sequence of this clone aligns with the gene accession number as a point of reference only. However, individual transcript sequences of the same gene can differ through naturally occurring variations (e.g. polymorphisms), each with its own valid existence. This clone is substantially in agreement with the reference, but a complete review of all prevailing variants is recommended prior to use. [More info](#)

OTI Annotation: This clone was engineered to express the complete ORF with an expression tag. Expression varies depending on the nature of the gene.

Components: The ORF clone is ion-exchange column purified and shipped in a 2D barcoded Matrix tube containing 10ug of transfection-ready, dried plasmid DNA (reconstitute with 100 ul of water).

Reconstitution Method:

1. Centrifuge at 5,000xg for 5min.
2. Carefully open the tube and add 100ul of sterile water to dissolve the DNA.
3. Close the tube and incubate for 10 minutes at room temperature.
4. Briefly vortex the tube and then do a quick spin (less than 5000xg) to concentrate the liquid at the bottom.
5. Store the suspended plasmid at -20°C. The DNA is stable for at least one year from date of shipping when stored at -20°C.

RefSeq: [NM_018838.5](#)

RefSeq Size: 592 bp

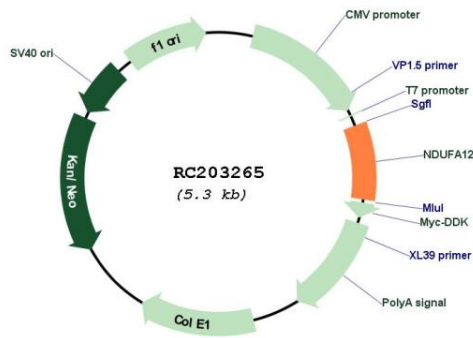
RefSeq ORF: 438 bp

Locus ID: 55967

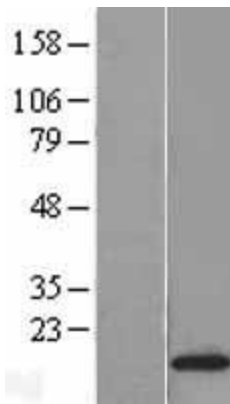
UniProt ID: [Q9UI09](#)
 Cytogenetics: 12q22
 Domains: Complex1_17_2kD
 MW: 17.1 kDa

Gene Summary: This gene encodes a protein which is part of mitochondrial complex 1, part of the oxidative phosphorylation system in mitochondria. Complex 1 transfers electrons to ubiquinone from NADH which establishes a proton gradient for the generation of ATP. Mutations in this gene are associated with Leigh syndrome due to mitochondrial complex 1 deficiency. Pseudogenes of this gene are located on chromosomes 5 and 13. Alternative splicing results in multiple transcript variants. [provided by RefSeq, Apr 2012]

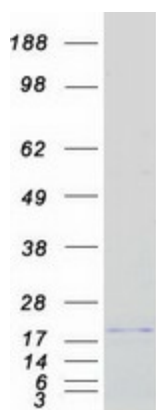
Product images:



Circular map for RC203265



Western blot validation of overexpression lysate (Cat# [LY412878]) using anti-DDK antibody (Cat# [TA50011-100]). Left: Cell lysates from untransfected HEK293T cells; Right: Cell lysates from HEK293T cells transfected with RC203265 using transfection reagent MegaTran 2.0 (Cat# [TT210002]).



Coomassie blue staining of purified NDUFA12 protein (Cat# [TP303265]). The protein was produced from HEK293T cells transfected with NDUFA12 cDNA clone (Cat# RC203265) using MegaTran 2.0 (Cat# [TT210002]).