

Product datasheet for RC203262

SIKE1 (NM_025073) Human Tagged ORF Clone

Product data:

Product Type: Expression Plasmids
Product Name: SIKE1 (NM_025073) Human Tagged ORF Clone
Tag: Myc-DDK
Symbol: SIKE1
Synonyms: SIKE
Mammalian Cell Selection: Neomycin
Vector: pCMV6-Entry (PS100001)
E. coli Selection: Kanamycin (25 ug/mL)
ORF Nucleotide Sequence: >RC203262 ORF sequence
 Red=Cloning site Blue=ORF Green=Tags(s)

TTTTGTAATACGACTCACTATAGGGCGGCCGGAATTCGTCGACTGGATCCGGTACCGAGGAGATCTGCC
GCC**CGATCGCC**

ATGAGTGCACCATCGAGAAGATCCTGACAGACGCCAAGACGCTGCTGGAGAGGCTACGGGAGCAGCATG
CGGCCCGGAGTCGCTGGTGGATCAGTCGGCGGCGCTGCACCGCGGGTAGCAGCTATCGGGAGGCGGG
GACAGCGCTTCCGGACAGTATCAAGAGGATGCATCCGATATGAAGGACATGTCCAATACAAACCTCAC
ATTCTGCTGTCCAAGAGAACACACAGATTAGAGACTTGAACAGGAAAACAGAGAGCTATGGATTTCT
TGGAGGAACACCAGGATGCTTTGGAATTATCATGAGCAAATATCGGAAACAGATGTTACAGTTAATGGT
TGCTAAAAAAGCGGTGGATGCTGAACCAGTCCTGAAAGCTCACCGAGTCTCACTCTGCAGAAATTGAGAGT
CAGATTGACAGAACTGTGAAATGGGAGAAGTGATGAGGAAAGCAGTTCAGGTGGATGATGACCAGTTTT
GTAAGATTGAGGAAAAATTAGCCCAATTAGAGCTTAAAAAAGGAACTTCGAGAATTATTGTCCATCAG
CAGTGAGTCTCTCAAGCCAGAAAGGAAAACCAATGGACTGCTTCCAAGCCATCAA

ACGCGTACGCGGCCGCTCGAGCAGAACTCATCTCAGAAGAGGATCTGGCAGCAAATGATATCCTGGATT
ACAAGGATGACGACGATAAGGTTTAA

Protein Sequence: >RC203262 protein sequence
 Red=Cloning site Green=Tags(s)

MSCTIEKILTDAKLLERLREHDAAAESLVDQSAALHRRVAAMREAGTALPDQYQEDASDMKMSKYKPH
ILLSQENTQIRDLQQENRELWISLEEHQDALELIMSKYRKQMLQMLVAKKAVDAEPVLKAHQSHSAEIES
QIDRICEMGEVMRKAVQVDDDFCKIQEKLAQLELENKELRELLSISSESLQARKENSMDTASQAIK

TRTRPLEQKLISEEDLAANDILDYKDDDDKV



Chromatograms: https://cdn.origene.com/chromatograms/mk6416_f08.zip

Restriction Sites: SgfI-MluI

Cloning Scheme:



ACCN: NM_025073

ORF Size: 621 bp

OTI Disclaimer: The molecular sequence of this clone aligns with the gene accession number as a point of reference only. However, individual transcript sequences of the same gene can differ through naturally occurring variations (e.g. polymorphisms), each with its own valid existence. This clone is substantially in agreement with the reference, but a complete review of all prevailing variants is recommended prior to use. [More info](#)

OTI Annotation: This clone was engineered to express the complete ORF with an expression tag. Expression varies depending on the nature of the gene.

Components: The ORF clone is ion-exchange column purified and shipped in a 2D barcoded Matrix tube containing 10ug of transfection-ready, dried plasmid DNA (reconstitute with 100 ul of water).

Reconstitution Method:

1. Centrifuge at 5,000xg for 5min.
2. Carefully open the tube and add 100ul of sterile water to dissolve the DNA.
3. Close the tube and incubate for 10 minutes at room temperature.
4. Briefly vortex the tube and then do a quick spin (less than 5000xg) to concentrate the liquid at the bottom.
5. Store the suspended plasmid at -20°C. The DNA is stable for at least one year from date of shipping when stored at -20°C.

RefSeq: [NM_025073.3](#)

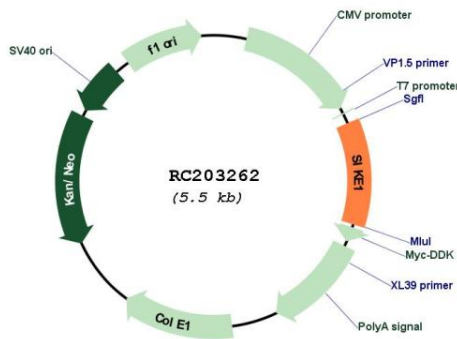
RefSeq Size: 5507 bp

RefSeq ORF: 624 bp

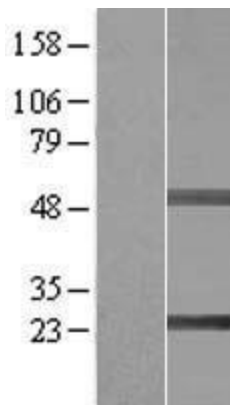
Locus ID: 80143

UniProt ID: [Q9BRV8](#)
Cytogenetics: 1p13.2
Protein Pathways: RIG-I-like receptor signaling pathway
MW: 23.7 kDa
Gene Summary: SIKE interacts with IKK-epsilon (IKBKE; MIM 605048) and TBK1 (MIM 604834) and acts as a suppressor of TLR3 (MIM 603029) and virus-triggered interferon activation pathways (Huang et al., 2005 [PubMed 16281057]).[supplied by OMIM, Mar 2008]

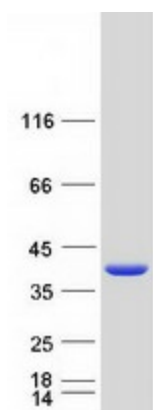
Product images:



Circular map for RC203262



Western blot validation of overexpression lysate (Cat# [LY410899]) using anti-DDK antibody (Cat# [TA50011-100]). Left: Cell lysates from untransfected HEK293T cells; Right: Cell lysates from HEK293T cells transfected with RC203262 using transfection reagent MegaTran 2.0 (Cat# [TT210002]).



Coomassie blue staining of purified SIKE1 protein (Cat# [TP303262]). The protein was produced from HEK293T cells transfected with SIKE1 cDNA clone (Cat# RC203262) using MegaTran 2.0 (Cat# [TT210002]).