

## Product datasheet for **RC203261**

### **C15orf15 (RSL24D1) (NM\_016304) Human Tagged ORF Clone**

#### Product data:

**Product Type:** Expression Plasmids  
**Product Name:** C15orf15 (RSL24D1) (NM\_016304) Human Tagged ORF Clone  
**Tag:** Myc-DDK  
**Symbol:** C15orf15  
**Synonyms:** C15orf15; HRP-L30-iso; L30; RLP24; RPL24; RPL24L; TVAS3  
**Mammalian Cell Selection:** Neomycin  
**Vector:** pCMV6-Entry (PS100001)  
**E. coli Selection:** Kanamycin (25 ug/mL)  
**ORF Nucleotide Sequence:** >RC203261 ORF sequence  
**Red=Cloning site Blue=ORF Green=Tags(s)**

TTTTGTAATACGACTCACTATAGGGCGGCCGGAATTCGTCGACTGGATCCGGTACCGAGGAGATCTGCC  
GCC**CGATCGCC**

ATCGGTATCGAAAAGTGTATTCTGTTTCGGGGCCATCTATCCTGGACACGGCATGATGTTCTGCCGCA  
ACGATTGCAAGGTGTTTCAGATTTTGCAATCTAAATGTCATAAAAACTTTAAAAAGAAGCGCAATCCTCG  
CAAAGTTAGGTGGACAAAGCATTCCGAAAGCAGCTGGTAAAGAGCTTACAGTGGATAATTCATTTGAA  
TTTGAAAAACGTAGAAAATGAACCTATCAAATACCAGCGAGAGCTATGGAATAAACTATTGATGCGATGA  
AGAGAGTTGAAGAAATCAAACAGAAGCGCCAAGCTAAATTTATAATGAACAGATTGAAGAAAAATAAGA  
GCTACAGAAAGTTCAGGATATCAAAGAAGTCAAGCAAAACATCCATCTTATCCGAGCCCCTTTGCAGGC  
AAAGGGAAACAGTTGGAAGAGAAAATGGTACAGCAGTTACAAGAGGATGTGGACATGGAAGATGCTCTT

**ACGCGT**ACGCGGCCGCTCGAGCAGAACTCATCTCAGAAGAGGATCTGGCAGCAAATGATATCCTGGATT  
ACAAGGATGACGACGATAAGGTTTAA

**Protein Sequence:** >RC203261 protein sequence  
**Red=Cloning site Green=Tags(s)**

MRIEKYFCSGPIYPGHGMMFVRNDCKVFRFCKSKCHKNFKKRNPVKVRWTKAFRKAAGKELTVDNSFE  
FEKRRNEPIKYQRELWNKTIDAMKRVEEIKQKRQAKFIMNRLKKNKELQKVQDIKEVKQNIHLIRAPLAG  
KGKQLEEKMVQQLQEDVDMEDAP

**TRTRPLEQKLI**SEEDLAANDILDYKDDDDKV

**Chromatograms:** [https://cdn.origene.com/chromatograms/mk6417\\_f08.zip](https://cdn.origene.com/chromatograms/mk6417_f08.zip)



[View online »](#)

Restriction Sites: SgfI-MluI

Cloning Scheme:



ACCN: NM\_016304

ORF Size: 489 bp

OTI Disclaimer: The molecular sequence of this clone aligns with the gene accession number as a point of reference only. However, individual transcript sequences of the same gene can differ through naturally occurring variations (e.g. polymorphisms), each with its own valid existence. This clone is substantially in agreement with the reference, but a complete review of all prevailing variants is recommended prior to use. [More info](#)

OTI Annotation: This clone was engineered to express the complete ORF with an expression tag. Expression varies depending on the nature of the gene.

Components: The ORF clone is ion-exchange column purified and shipped in a 2D barcoded Matrix tube containing 10ug of transfection-ready, dried plasmid DNA (reconstitute with 100 ul of water).

Reconstitution Method:

1. Centrifuge at 5,000xg for 5min.
2. Carefully open the tube and add 100ul of sterile water to dissolve the DNA.
3. Close the tube and incubate for 10 minutes at room temperature.
4. Briefly vortex the tube and then do a quick spin (less than 5000xg) to concentrate the liquid at the bottom.
5. Store the suspended plasmid at -20°C. The DNA is stable for at least one year from date of shipping when stored at -20°C.

RefSeq: [NM\\_016304.3](#)

RefSeq Size: 1487 bp

RefSeq ORF: 492 bp

Locus ID: 51187

UniProt ID: [Q9UHA3](#)

Cytogenetics: 15q21.3

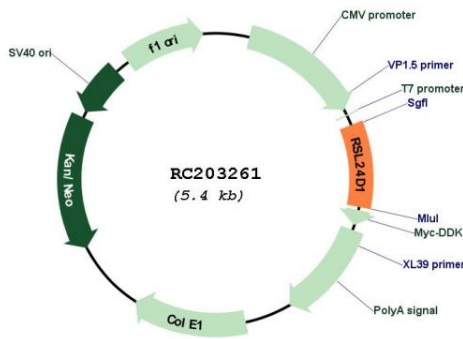
Domains: Ribosomal\_L24e

Protein Pathways: Ribosome

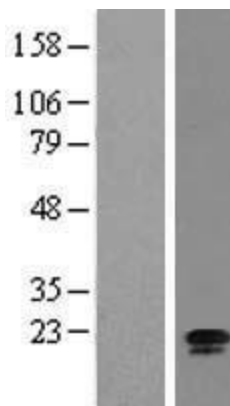
MW: 19.6 kDa

**Gene Summary:** This gene encodes a protein sharing a low level of sequence similarity with human ribosomal protein L24. Although this gene has been referred to as RPL24, L30, and 60S ribosomal protein L30 isolog in the sequence databases, it is distinct from the human genes officially named RPL24 (which itself has been referred to as ribosomal protein L30) and RPL30. The protein encoded by this gene localizes to the nucleolus and is thought to play a role in the biogenesis of the 60S ribosomal subunit. The precise function of this gene is currently unknown. This gene utilizes alternative polyadenylation signals and has multiple pseudogenes. [provided by RefSeq, Jul 2012]

**Product images:**



Circular map for RC203261



Western blot validation of overexpression lysate (Cat# [LY414075]) using anti-DDK antibody (Cat# [TA50011-100]). Left: Cell lysates from untransfected HEK293T cells; Right: Cell lysates from HEK293T cells transfected with RC203261 using transfection reagent MegaTran 2.0 (Cat# [TT210002]).