

## Product datasheet for **RC203254**

### CD36 (NM\_000072) Human Tagged ORF Clone

#### Product data:

Product Type:	Expression Plasmids
Product Name:	CD36 (NM_000072) Human Tagged ORF Clone
Tag:	Myc-DDK
Symbol:	CD36
Synonyms:	BDPLT10; CHDS7; FAT; GP3B; GP4; GPIV; PASIV; SCARB3
Mammalian Cell Selection:	Neomycin
Vector:	pCMV6-Entry (PS100001)
E. coli Selection:	Kanamycin (25 ug/mL)



[View online »](#)

**ORF Nucleotide Sequence:**

>RC203254 ORF sequence  
 Red=Cloning site Blue=ORF Green=Tags(s)

TTTTGTAATACGACTCACTATAGGGCGGCCGGAATTCGTCGACTGGATCCGGTACCGAGGAGATCTGCC  
 GCC**CGCATCGCC**

ATGGGCTGTGACCGAACTGTGGGCTCATCGTGGGGCTGTCATTGGTGTCTCCTGGCTGTGTTTGGAG  
 GTATTCTAATGCCAGTTGGAGACCTGCTTATCCAGAAGACAATAAAAAGCAAGTTGTCCTCGAAGAAGG  
 TACAATTGCTTTTAAAAATTGGGTTAAAAACAGGCACAGAAGTTTACAGACAGTTTGGATCTTTGATGTG  
 CAAAATCCACAGGAAGTGATGATGAACAGCAGCAACATTCAAGTTAAGCAAAGAGGTCCTTATACGTACA  
 GAGTTCGTTTTCTAGCCAAGGAAAATGTAACCCAGGACGCTGAGGACAACACAGTCTCTTTCCTGCAGCC  
 CAATGGTGCCATCTTCGAACCTTCACTATCAGTTGGAACAGAGGCTGACAACTTCACAGTTCTCAATCTG  
 GCTGTGGCAGCTGCATCCATATCTATCAAAATCAATTTGTTCAAATGATCCTCAATTCACTTATTAACA  
 AGTCAAAATCTTCTATGTTCCAAGTCAGAACTTTGAGAGAAGTGTATGGGGCTATAGGGATCCATTTT  
 GAGTTTGGTTCCATACCCTGTTACTACCACAGTTGGTCTGTTTTATCCTTACAACAATACTGCAGATGGA  
 GTTTATAAAGTTTTCAATGGAAAAGATAACATAAGTAAAGTTGCCATAATCGACACATATAAAGGTA  
 GGAATCTGTCCTATTGGGAAAGTCACTGCGACATGATTAAATGGTACAGATGCAGCCTCATTTCCACCTTT  
 TGTGAGAAAAGCCAGGTATTGCAGTCTTTTCTTCTGATATTTGCAGGTCAATCTATGCTGATTTGAA  
 TCCGACGTTAATCTGAAAGGAATCCCTGTGTATAGATTTGTTCTTCCATCCAAGGCCCTTTCCTCCAG  
 TTGAAAACCCAGACAACATTTGTTTCTGCACAGAAAAAATATCTCAAAAAATTGACATCATATGGTGT  
 GCTAGACATCAGCAAATGCAAAGAAGGGAGACCTGTGTACATTTCACTTCCTCATTTTCTGTATGCAAGT  
 CCTGATGTTTCAAGACCTATTGATGGATTAACCCAAATGAAGAAGAACATAGGACATACTGGATATTG  
 AACCTATAACTGGATTCACCTTACAATTTGCAAAACGGCTGCAGGTCAACCTATTGGTCAAGCCATCAGA  
 AAAAAATCAAGTATTAAGAATCTGAAGAGGAACATATATTGTGCCTATTCTTTGGCTTAATGAGACTGGG  
 ACCATTGGTGATGAGAAGGCAAACATGTTCAAGTCAAGTAACTGGAAAAATAAACCTCCTTGGCCTGA  
 TAGAAATGATCTTACTCAGTGTTGGTGTGGTGTGTTGTTGCTTTTATGATTTCAATTGTGCATGCAG  
 ATCGAAAAACAATAAAA

**ACGCGT**ACGCGGCCGCTCGAGCAGAAACTCATCTCAGAAGAGGATCTGGCAGCAAATGATATCCTGGATT  
 ACAAGGATGACGACGATAAGGTTTAA

**Protein Sequence:**

>RC203254 protein sequence  
 Red=Cloning site Green=Tags(s)

MGCDRNCGLIAGAVIGAVLAVFGGILMPVGDLLIQKTIKKQVVLEEGTIAFKNWKVKGTEVYRQFWIFDV  
 QNPQEVMMNSSNIQVKQRGPYTYRVRFLAKENVTQDAEDNTVSFLQPNGAIFEPSLSVGTEADNFTVLNL  
 AVAAASHIYQNQFVQMILNSLINKSSMFQVRTLRELLWGYRDPFLSLVPYPVTTTVGLFYPNNTADG  
 VYKVFNGKDNISKVAIIDTYKGRNLSYWESHCDMINGTDAASFPPFVEKSQVLQFFSSDICRSIYAVFE  
 SDVNLKGIPIVYRFVLPKAFASPVENPDNYCFCTEKIISKNCTSYGVLDISKCKEGRPVYISLPHFLYAS  
 PDVSEPIDGLNPNEEHRTYLDIEPITGFTLQFAKRLQVNLVKPSEKIQLKLNKRNKRYIVPILWLNK  
 TIGDEKANMFRSQVTGKINLLGLIEMILLSVGVVMFVAFMISYCACRSKTIK

**TR**TRPLEQKLISEEDLAANDILDYKDDDDKV

**Chromatograms:**

[https://cdn.origene.com/chromatograms/mk6055\\_g11.zip](https://cdn.origene.com/chromatograms/mk6055_g11.zip)

**Restriction Sites:**

Sgfl-MluI

**Cloning Scheme:**

Cloning sites used for ORF Shutting:



\* The last codon before the Stop codon of the ORF

**ACCN:** NM\_000072

**ORF Size:** 1416 bp

**OTI Disclaimer:** The molecular sequence of this clone aligns with the gene accession number as a point of reference only. However, individual transcript sequences of the same gene can differ through naturally occurring variations (e.g. polymorphisms), each with its own valid existence. This clone is substantially in agreement with the reference, but a complete review of all prevailing variants is recommended prior to use. [More info](#)

**OTI Annotation:** This clone was engineered to express the complete ORF with an expression tag. Expression varies depending on the nature of the gene.

**Components:** The ORF clone is ion-exchange column purified and shipped in a 2D barcoded Matrix tube containing 10ug of transfection-ready, dried plasmid DNA (reconstitute with 100 ul of water).

- Reconstitution Method:**
1. Centrifuge at 5,000xg for 5min.
  2. Carefully open the tube and add 100ul of sterile water to dissolve the DNA.
  3. Close the tube and incubate for 10 minutes at room temperature.
  4. Briefly vortex the tube and then do a quick spin (less than 5000xg) to concentrate the liquid at the bottom.
  5. Store the suspended plasmid at -20°C. The DNA is stable for at least one year from date of shipping when stored at -20°C.

**Note:** Plasmids are not sterile. For experiments where strict sterility is required, filtration with 0.22um filter is required.

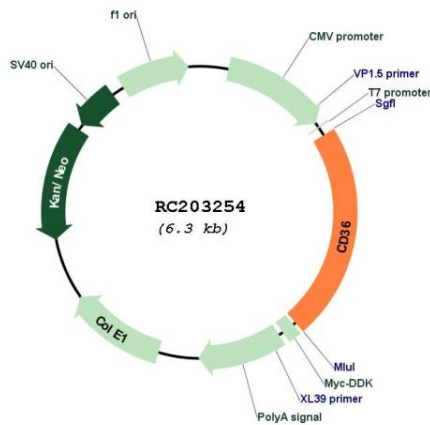
**RefSeq:** [NM\\_000072.3](#)
**RefSeq Size:** 2108 bp

**RefSeq ORF:** 1419 bp

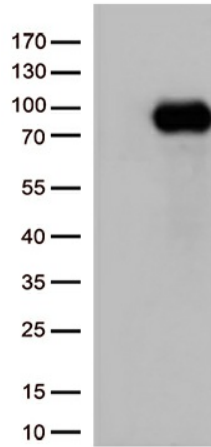
**Locus ID:** 948

<b>UniProt ID:</b>	<u>P16671</u>
<b>Cytogenetics:</b>	7q21.11
<b>Domains:</b>	CD36
<b>Protein Families:</b>	Druggable Genome, Transmembrane
<b>Protein Pathways:</b>	Adipocytokine signaling pathway, ECM-receptor interaction, Hematopoietic cell lineage, PPAR signaling pathway
<b>MW:</b>	53.1 kDa
<b>Gene Summary:</b>	The protein encoded by this gene is the fourth major glycoprotein of the platelet surface and serves as a receptor for thrombospondin in platelets and various cell lines. Since thrombospondins are widely distributed proteins involved in a variety of adhesive processes, this protein may have important functions as a cell adhesion molecule. It binds to collagen, thrombospondin, anionic phospholipids and oxidized LDL. It directly mediates cytoadherence of <i>Plasmodium falciparum</i> parasitized erythrocytes and it binds long chain fatty acids and may function in the transport and/or as a regulator of fatty acid transport. Mutations in this gene cause platelet glycoprotein deficiency. Multiple alternatively spliced transcript variants have been found for this gene. [provided by RefSeq, Feb 2014]

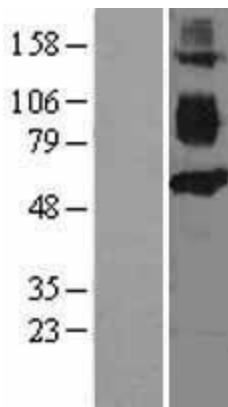
**Product images:**



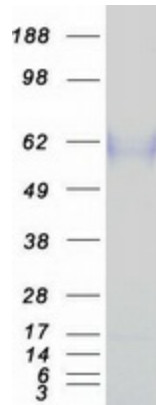
Circular map for RC203254



HEK293T cells were transfected with the pCMV6-ENTRY control (Cat# [PS100001], Left lane) or pCMV6-ENTRY CD36 (Cat# RC203254, Right lane) cDNA for 48 hrs and lysed. Equivalent amounts of cell lysates (5 ug per lane) were separated by SDS-PAGE and immunoblotted with anti-CD36 (Cat# [TA500921])(1:500).



Western blot validation of overexpression lysate (Cat# [LY424372]) using anti-DDK antibody (Cat# [TA50011-100]). Left: Cell lysates from untransfected HEK293T cells; Right: Cell lysates from HEK293T cells transfected with [RC223825] using transfection reagent MegaTran 2.0 (Cat# [TT210002]).



Coomassie blue staining of purified CD36 protein (Cat# [TP303254]). The protein was produced from HEK293T cells transfected with CD36 cDNA clone (Cat# RC203254) using MegaTran 2.0 (Cat# [TT210002]).