

Product datasheet for **RC203241**

CSRP3 (NM_003476) Human Tagged ORF Clone

Product data:

Product Type: Expression Plasmids
Product Name: CSRP3 (NM_003476) Human Tagged ORF Clone
Tag: Myc-DDK
Symbol: CSRP3
Synonyms: CLP; CMD1M; CMH12; CRP3; LMO4; MLP
Mammalian Cell Selection: Neomycin
Vector: pCMV6-Entry (PS100001)
E. coli Selection: Kanamycin (25 ug/mL)
ORF Nucleotide Sequence: >RC203241 ORF sequence
 Red=Cloning site Blue=ORF Green=Tags(s)

TTTTGTAATACGACTCACTATAGGGCGGCCGGAATTCGTCGACTGGATCCGGTACCGAGGAGATCTGCC
 GCC**CGATCGCC**

ATGCCAACTGGGGCGGAGGGCGCAAAATGTGGAGCCTGTGAAAAGACCGTCTACCATGCAGAAGAAATCC
 AGTGCAATGGAAGGAGTTCCACAAGACGTGTTCCACTGCATGGCCTGCAGGAAGGCTCTTGACAGCAC
 GACAGTCGCGGCTCATGAGTCGGAGATCTACTGCAAGGTGTGCTATGGGCGCAGATATGGCCCAAAGGG
 ATCGGGTATGGACAAGGCGCTGGCTGTCTCAGCACAGACAGGGCGAGCATCTCGGCCTGCAGTTCCAAC
 AGTCCCAAAGCCGGCAGCTCAGTTACCACCAGCAACCCTTCCAAATTCAGTCAAAGTTGGAGAGTC
 CGAGAAGTGCCCTCGATGTGGCAAGTCAGTCTATGCTGCTGAGAAGGTTATGGGAGGTGGCAAGCCTTGG
 CACAAGACCTGTTTCCGCTGTGCCATCTGTGGGAAGAGTCTGGAGTCCACAAATGCTACTGACAAAGATG
 GGGAACTTTATTGCAAAGTTTGCTATGCCAAAAATTTGGCCCCACGGGTATTGGGTTTGGAGGCCTTAC
 ACAACAAGTGAAAAGAAAGAA

ACGCGTACGCGGCCGCTCGAGCAGAACTCATCTCAGAAGAGGATCTGGCAGCAAATGATATCCTGGATT
 ACAAGGATGACGACGATAAGGTTTAA

Protein Sequence: >RC203241 protein sequence
 Red=Cloning site Green=Tags(s)

MPNWGGGAKCGACEKTVYHAEIQCNGRSFHKTCFHCMACRKALDSTTVAHSEIYCKVCYGRRYGPKG
 IGYQGAGCLSTDTGEHLGLQFQQSPKPARSVTTSNPSKFTAKFGESEKPCRCKGKSVYAAEKVMGGGKPKW
 HKTCFRCAICGKSLSTNVTDKGELYCKVCYAKNFGPTGIGFGLTQQVEKKE

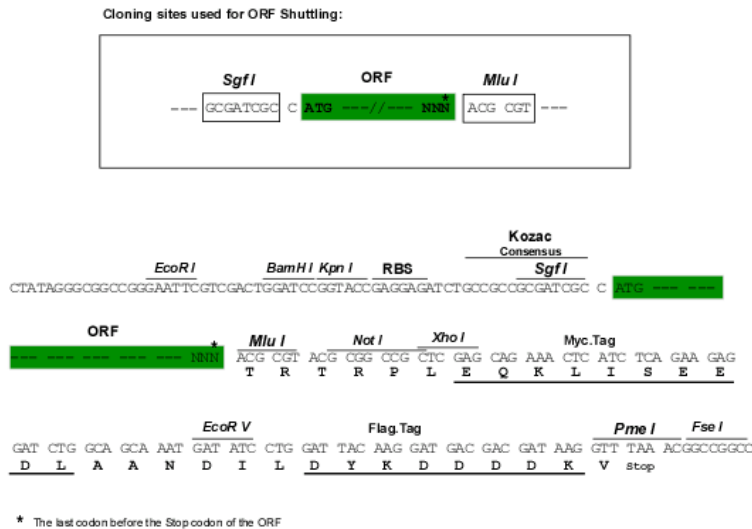
TRTRPLEQKLISEEDLAANDILDYKDDDDKV



Chromatograms: https://cdn.origene.com/chromatograms/mk6577_c06.zip

Restriction Sites: SgfI-MluI

Cloning Scheme:



ACCN: NM_003476

ORF Size: 582 bp

OTI Disclaimer: The molecular sequence of this clone aligns with the gene accession number as a point of reference only. However, individual transcript sequences of the same gene can differ through naturally occurring variations (e.g. polymorphisms), each with its own valid existence. This clone is substantially in agreement with the reference, but a complete review of all prevailing variants is recommended prior to use. [More info](#)

OTI Annotation: This clone was engineered to express the complete ORF with an expression tag. Expression varies depending on the nature of the gene.

Components: The ORF clone is ion-exchange column purified and shipped in a 2D barcoded Matrix tube containing 10ug of transfection-ready, dried plasmid DNA (reconstitute with 100 ul of water).

Reconstitution Method:

1. Centrifuge at 5,000xg for 5min.
2. Carefully open the tube and add 100ul of sterile water to dissolve the DNA.
3. Close the tube and incubate for 10 minutes at room temperature.
4. Briefly vortex the tube and then do a quick spin (less than 5000xg) to concentrate the liquid at the bottom.
5. Store the suspended plasmid at -20°C. The DNA is stable for at least one year from date of shipping when stored at -20°C.

RefSeq: [NM_003476.5](#)

RefSeq Size: 1464 bp

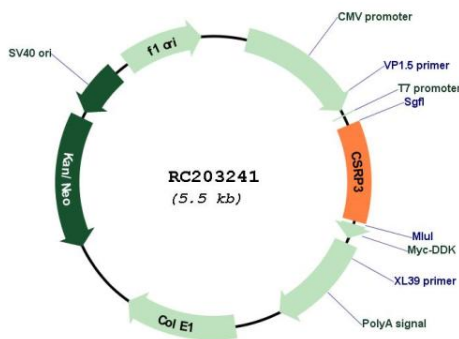
RefSeq ORF: 585 bp

Locus ID: 8048

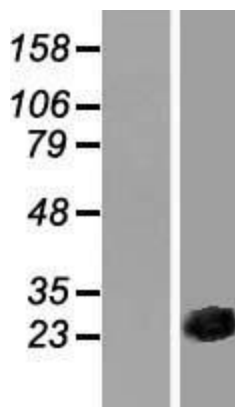
UniProt ID: [P50461](#)
Cytogenetics: 11p15.1
Domains: LIM
MW: 21 kDa

Gene Summary: This gene encodes a member of the CSRP family of LIM domain proteins, which may be involved in regulatory processes important for development and cellular differentiation. The LIM/double zinc-finger motif found in this protein is found in a group of proteins with critical functions in gene regulation, cell growth, and somatic differentiation. Mutations in this gene are thought to cause heritable forms of hypertrophic cardiomyopathy (HCM) and dilated cardiomyopathy (DCM) in humans. Alternatively spliced transcript variants with different 5' UTR, but encoding the same protein, have been found for this gene. [provided by RefSeq, Jul 2008]

Product images:



Circular map for RC203241



Western blot validation of overexpression lysate (Cat# [LY426837]) using anti-DDK antibody (Cat# [TA50011-100]). Left: Cell lysates from untransfected HEK293T cells; Right: Cell lysates from HEK293T cells transfected with [RC225217] using transfection reagent MegaTran 2.0 (Cat# [TT210002]).